

5222.TIF

Street: MAYBELLE ST.

X-Street: ADAMS ST.
OFFICIAL USE ONLY

ADAMS ST.

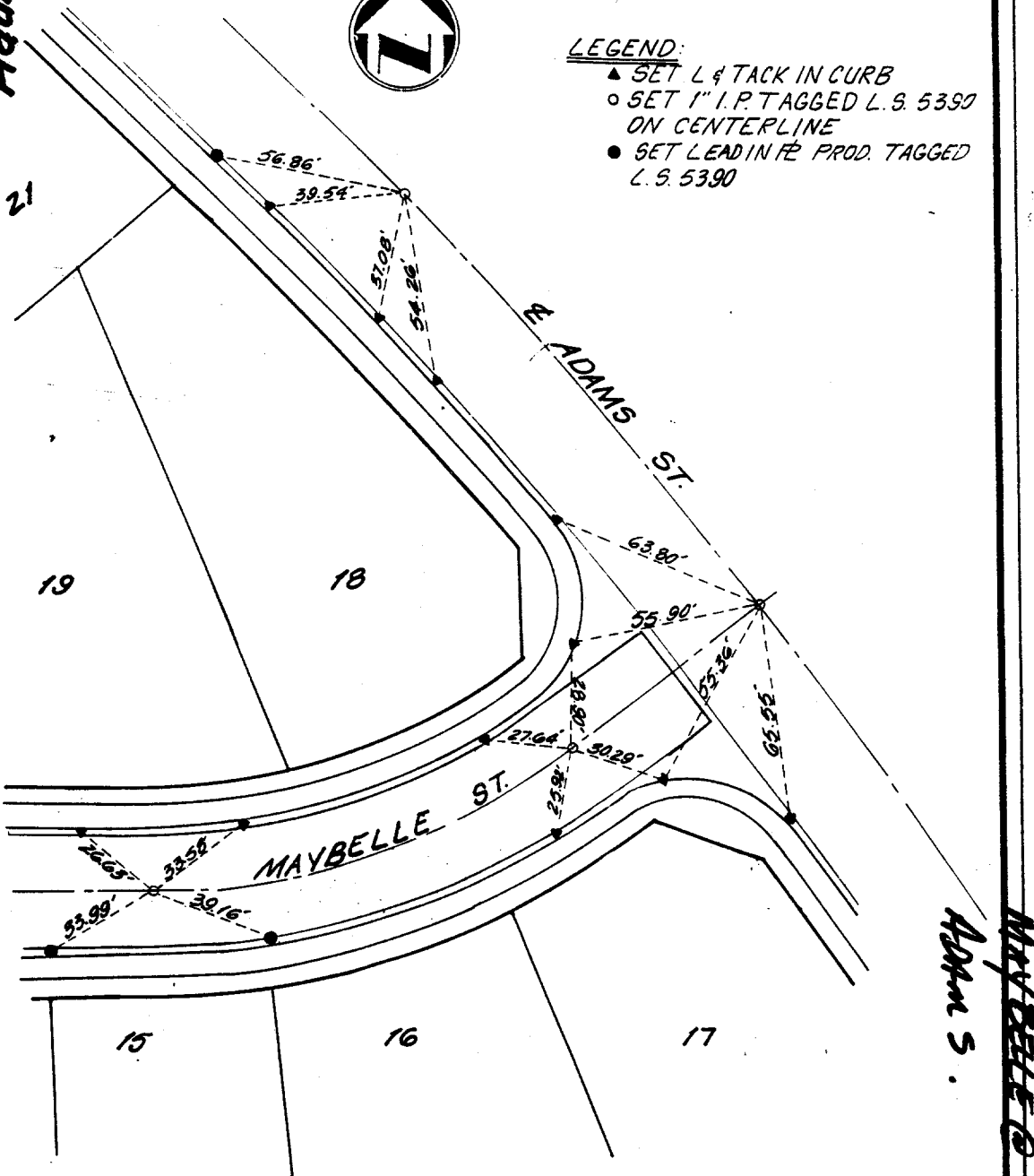
CENTERLINE TIES



LEGEND:

- ▲ SET L & TACK IN CURB
- SET 1" I.P. TAGGED L.S. 5390 ON CENTERLINE
- SET LEAD IN FE PROD. TAGGED L.S. 5390

Maybelle Adams



ADAMS ST.
MAYBELLE ST.

ADKAN ENGINEERS
CIVIL ENGINEERING, PLANNING, LAND SURVEYING
(714) 688-8241
1710 W. 17TH ST. SUITE 200
RIVERSIDE, CALIFORNIA 92504

DATE JAN 91

SCALE 1" = 40'

JOB NO. 3425

CLIENT SEXTON

SEXTON

CENTERLINE TIES

- × FD. Ramset Nail on T/C
- FD. "C" Nail on T/C

- FD. LD. & TK. on T/C
- Set LD. & TK. on T/C

Scale: 1" = 40'

Date: JAN 91

Drawn by:

W.O.:

F.B.:

OFFICIAL TIE PLAT
CITY OF RIVERSIDE

These ties are for the purpose of perpetuating the found monumentation. No claim is made as to the relationship of the points or lines shown hereon to true boundary locations.

TRACT 21245

Sheet 1 of 1

File No.: