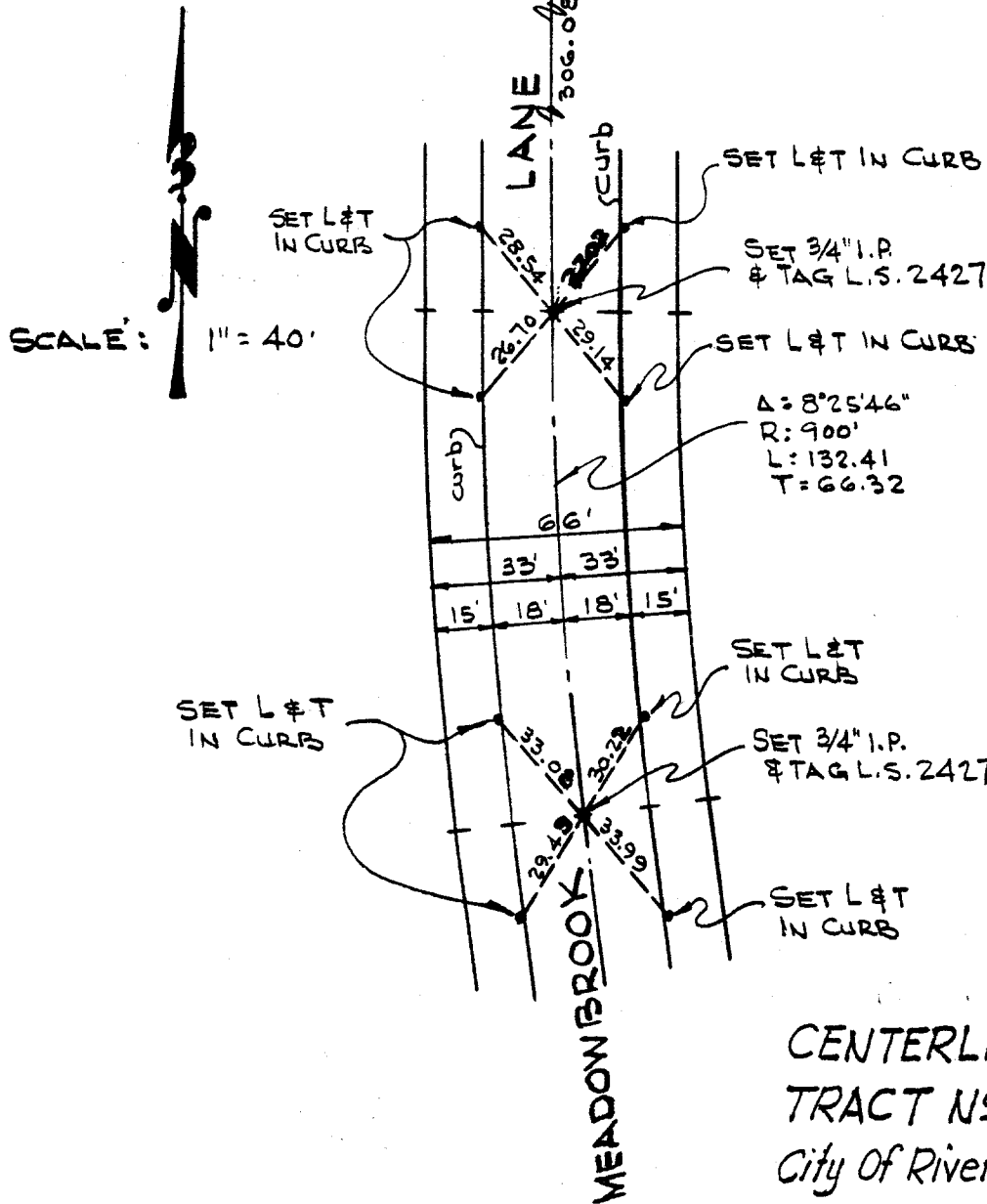


5232.TIF

1ST CURVE Sly of JURUPA AVENUE



April 8, 1969

CENTERLINE TIES
TRACT No 3760
City of Riverside
Page 2 of 3 Pages

Street: MEADOW BROOK LN. (1ST CURVE SLY) X-Street: JURUPA AVE
OFFICIAL USE ONLY

× FD. Ramset Nail on T/C
■ FD. "C" Nail on T/C

● FD. LD. & TK. on T/C
○ Set LD. & TK. on T/C

Scale:
Date:
Drawn by:
W.O.:
F.B.:

OFFICIAL TIE PLAT
CITY OF RIVERSIDE

These ties are for the purpose of perpetuating the found monumentation. No claim is made as to the relationship of the points or lines shown hereon to true boundary locations.

Sheet 2 of 3
File No.: