

5237.TF



J.F. Davidson Associates, Inc.
ENGINEERING PLANNING SURVEYING
LANDSCAPE ARCHITECTURE

F.B. 13251 / 339

SURVEY OF CENTERLINE TIES TR 22653 L

FOR Mc Millan

W.O. No. 13251

Sheet 3 of 3

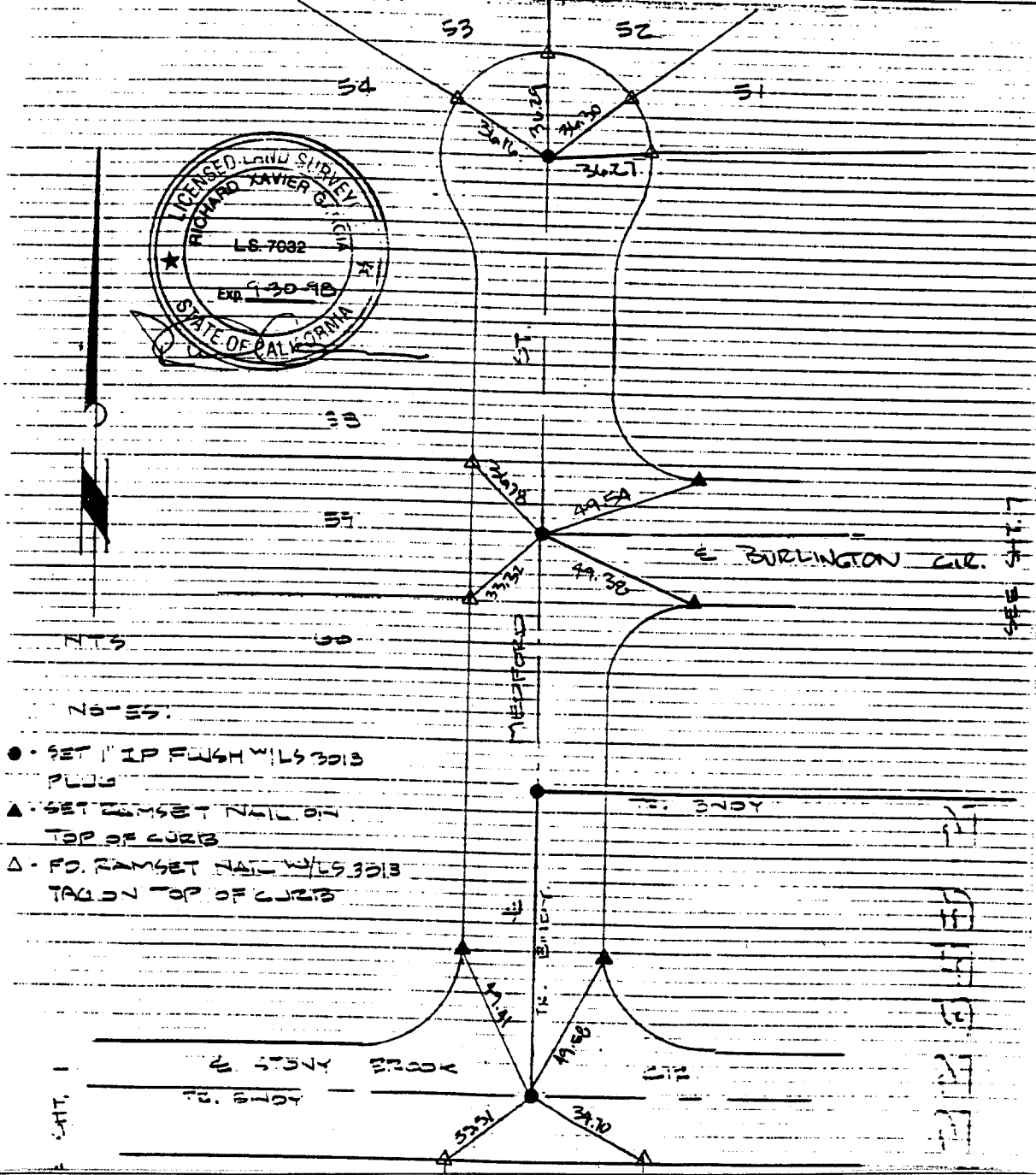
SURVEY PARTY [Signature]

REF.

Date 10-2-95

A.M.

SURVEY NOTES MEDFORD ST @ SPINY BROOK CIR
@ BURLINGTON CIR.



- SET 1" IP FLASH W/LS 3013 PILE
- ▲ SET RAMSET NAIL ON TOP OF CURB
- △ SET RAMSET NAIL ON TOP OF CURB

- × FD. Ramset Nail on T/C
- FD. LD. & TK. on T/C
- FD. "C" Nail on T/C
- Set LD. & TK. on T/C

Street: MEDFORD ST
X-Street: BURLINGTON CIR
OFFICIAL USE ONLY

OFFICIAL TIE PLAT CITY OF RIVERSIDE

These ties are for the purpose of perpetuating the found monumentation. No claim is made as to the relationship of the points or lines shown hereon to true boundary locations.

Scale:
Date:
Drawn by:
W.O.:
F.B.:

Sheet 1 of 1
File No.: