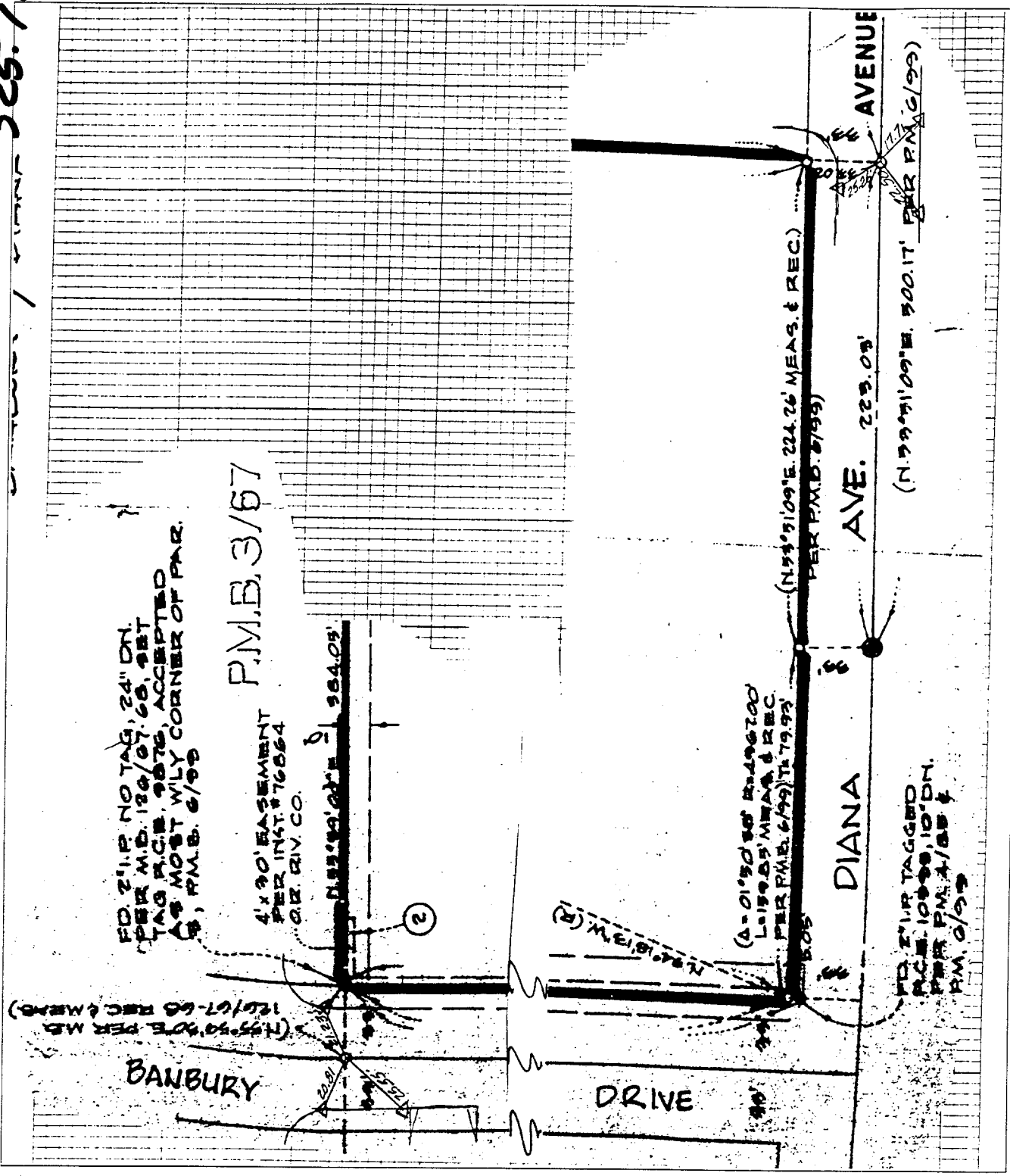


7-525

Street: BANBURY

OFFICIAL USE ONLY

X-Street: DIANA



FD. 2 1/4\" RAMSET NAIL, 24\" DN.
 PER M.B. 126/07/68, SET
 TAG P.C.M. 9875, ACCEPTED
 AS MOST WELY CORNER OF PAR.
 5, P.M.B. 6/99

P.M.B. 3/67

4 x 30' EASEMENT
 PER INT. #76864
 GR. RIV. CO.

N 55° 50' 00\"

(2)

(A-01'50\"

(N 55° 51' 09\" E. 224.26' MEAS. & REC.)
 PER P.M.B. 3/99

DIANA

AVE. 223.03'

FD. 2 1/4\" TAGGED
 P.C.M. 10000, 10' DN.
 PER P.M. 4/88 &
 P.M. 0/99

(N 55° 51' 09\" E. 500.17' PER P.M. 6/99)

AVENUE

- ✕ FD. Ramset Nail on T/C
- FD. "C" Nail on T/C

- FD. LD. & TK. on T/C
- Set LD. & TK. on T/C

Scale:
 Date:
 Drawn by:
 W.O.:
 F.B.:

OFFICIAL TIE PLAT

CITY OF RIVERSIDE

These ties are for the purpose of perpetuating the found monumentation. No claim is made as to the relationship of the points or lines shown hereon to true boundary locations.

Sheet 1 of 1
 File No.: