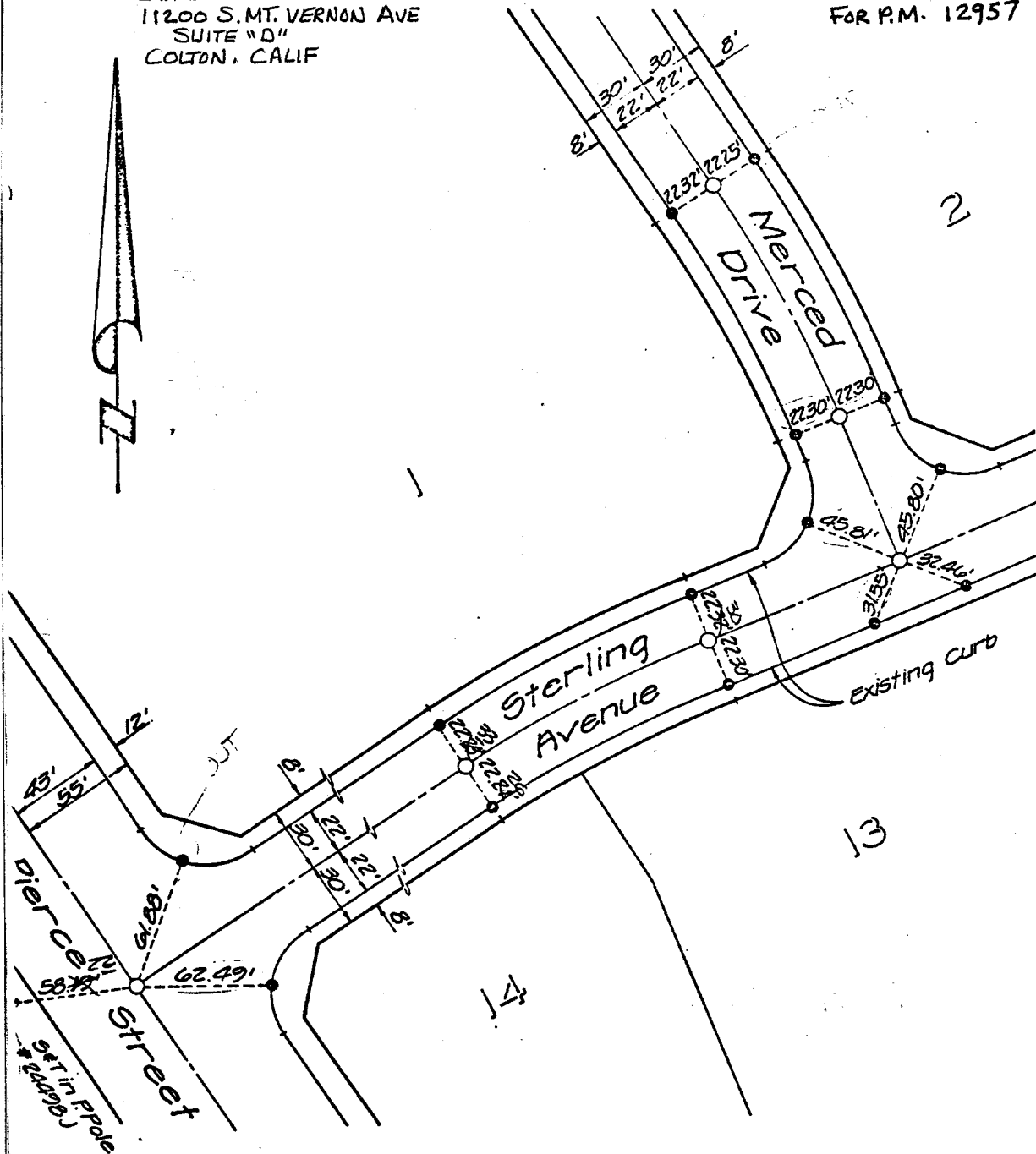


J.F. DAVIDSON ASSOCIATES
 11200 S. MT. VERNON AVE
 SUITE "D"
 COLTON, CALIF

MONUMENT TIES
 FOR P.M. 12957



Street: **MERCED DR.**

OFFICIAL USE ONLY

X-Street: **STERLING AVE**

○ Indicates 3/4" I.P. with plastic plug stamped LS.3018, flush, unless otherwise noted.
 ● Indicates nail in top of curb unless otherwise noted.

× FD. Ramset Nail on T/C
 ■ FD. "C" Nail on T/C

● FD. LD. & TK. on T/C
 ○ Set LD. & TK. on T/C

Scale: 1" = 60'

Date: DEC 1981

Drawn by:

W.O.:

F.B.:

OFFICIAL TIE PLAT
CITY OF RIVERSIDE

These ties are for the purpose of perpetuating the found monumentation. No claim is made as to the relationship of the points or lines shown hereon to true boundary locations.

Sheet **2** of **4**

File No.: