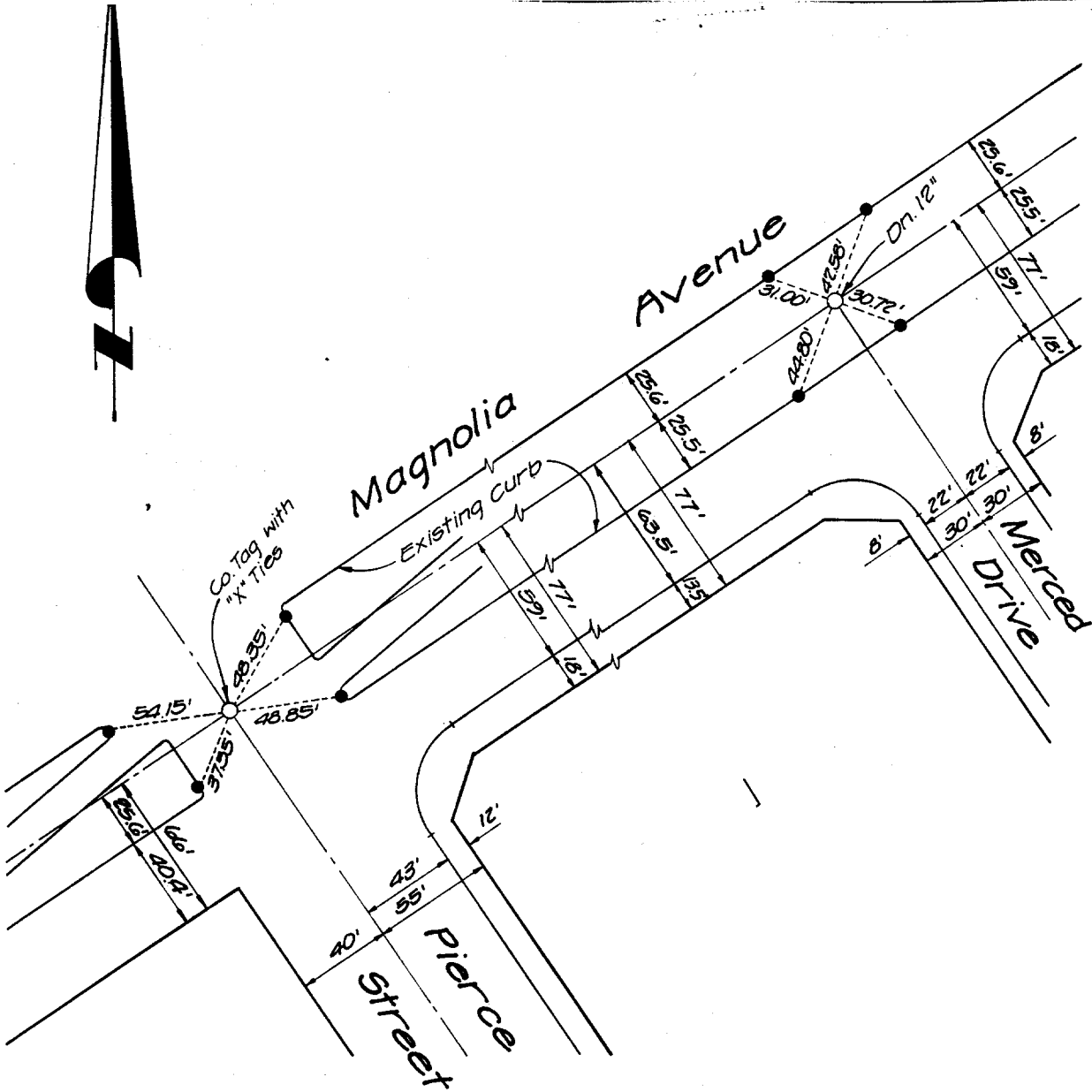


Street: **MERCED DR**
 X-Street: **MAGNOLIA AVE**

OFFICIAL USE ONLY



○ Indicates 3/4" I.P. with plastic plug stamped L.S. 3018, flush, unless otherwise noted.
 ● Indicates nail in top of curb, unless otherwise noted.

J.F. DAVIDSON ASSOCIATES 11200 S. MT. VERNON AVE. SUITE "D" COLTON, CALIFORNIA	MONUMENT TIES FOR P.M. 12257	SHEET NO. <u>1</u> of <u>4</u> DATE <u>December 1981</u> SCALE <u>1" = 60'</u>
---	--	--

- ✕ FD. Ramset Nail on T/C
- FD. LD. & TK. on T/C
- FD. "C" Nail on T/C
- Set LD. & TK. on T/C

Scale: Date: Drawn by: W.O.: F.B.:	<h2 style="margin: 0;">OFFICIAL TIE PLAT</h2> <h3 style="margin: 0;">CITY OF RIVERSIDE</h3> <p style="font-size: small; margin: 5px 0;">These ties are for the purpose of perpetuating the found monumentation. No claim is made as to the relationship of the points or lines shown hereon to true boundary locations.</p>	Sheet 1 of 4- File No.:
--	---	----------------------------