

5276.TIF

Street: MERRICK ST
X-Street: CHESTERFIELD RD.
OFFICIAL USE ONLY

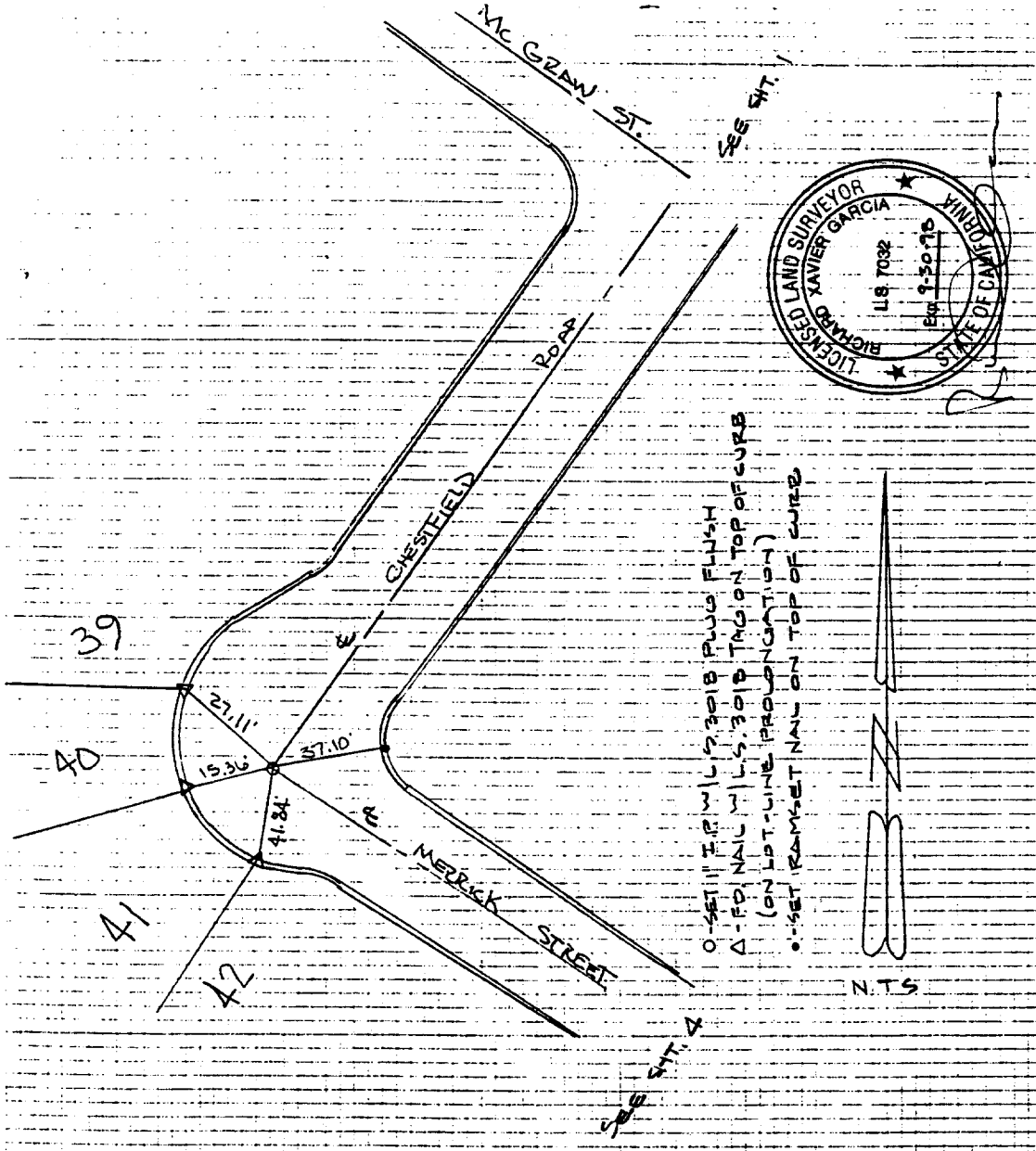


J.F. Davidson Associates, Inc.
ENGINEERING PLANNING SURVEYING
ARCHITECTURE LANDSCAPE ARCHITECTURE

FB. 13251/32A

SURVEY OF CENTER LINES TIES SHT. 3 OF 5
FOR TRACT 22653-7 W.O. No. 9513251 Date 8-31-95
SURVEY PARTY RODOLFO - VILLO REF. _____ AM. _____

SURVEY NOTES
MERRICK ST @ CHESTERFIELD RD



0-SET 1/2" IR W/L 5/16" PINS FLUSH
Δ-FD NAIL W/L 5/16" TAG ON TOP OF CURB
(ON LOT-LINE PROLONGATION)
●-SET RAMSET NAIL ON TOP OF CURB

- ✕ FD. Ramset Nail on T/C
- FD. LD. & TK. on T/C
- FD. "C" Nail on T/C
- Set LD. & TK. on T/C

Scale:
Date:
Drawn by:
W.O.:
F.B.:

OFFICIAL TIE PLAT
CITY OF RIVERSIDE

*These ties are for the purpose of perpetuating the found
monumentation. No claim is made as to the relationship of
the points or lines shown hereon to true boundary locations.*

Sheet **3** of **5**
File No.: