

Street: RIVERSIDE AVE. X-Street: MERRILL AVE. MERRILL AVE.

OFFICIAL USE ONLY

Scale: 1" = 20'
 Date: 01/29/98 5-13-97
 Drawn by: scurtis
 W.O.:
 F.B.:

OFFICIAL TIE PLAT

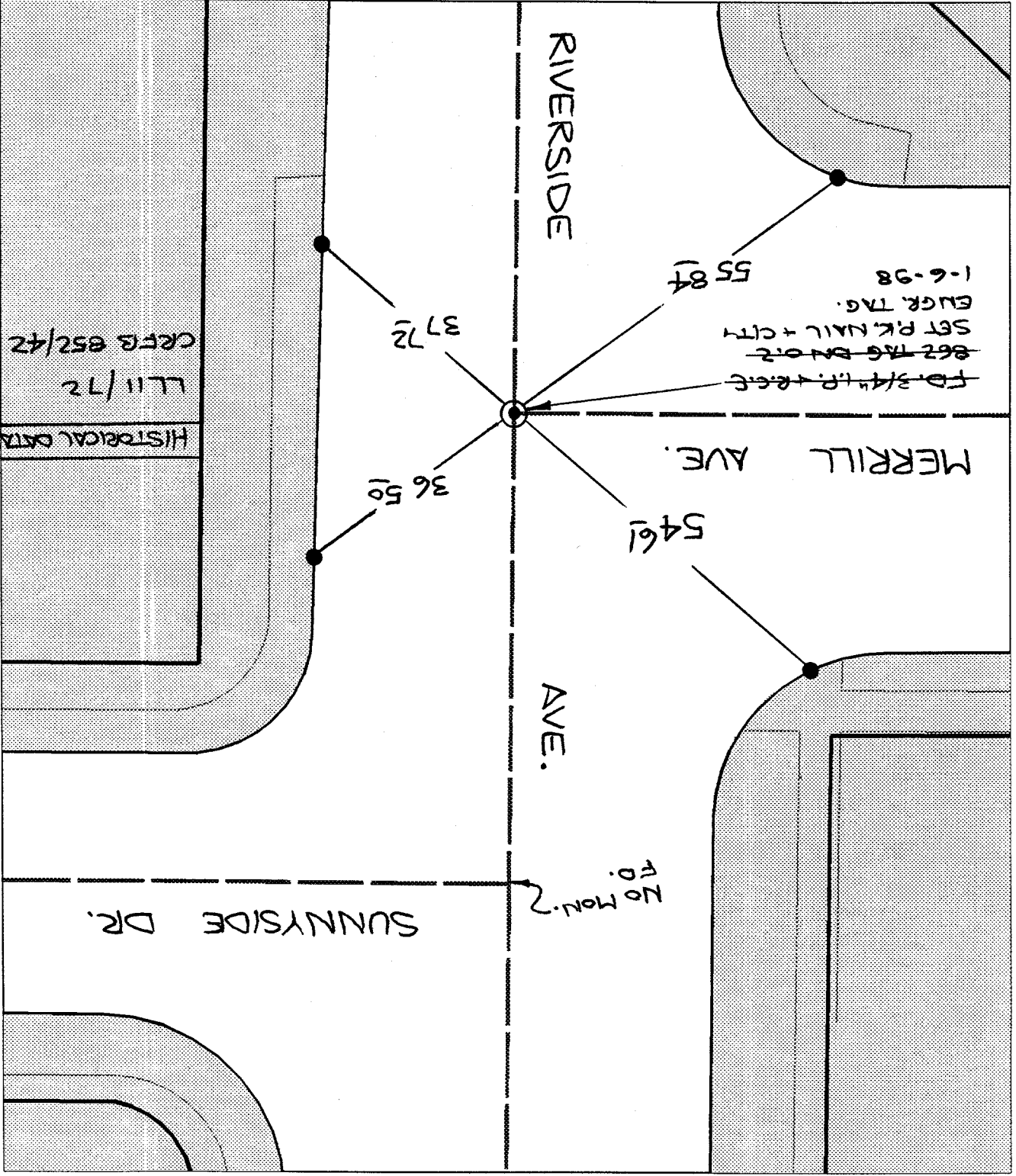
CITY OF RIVERSIDE

These ties are for the purpose of perpetuating the found monumentation. No claim is made as to the relationship of the points or lines shown hereon to true boundary locations.



Sheet 1 of 1

File No.:



TRANSIT TIES