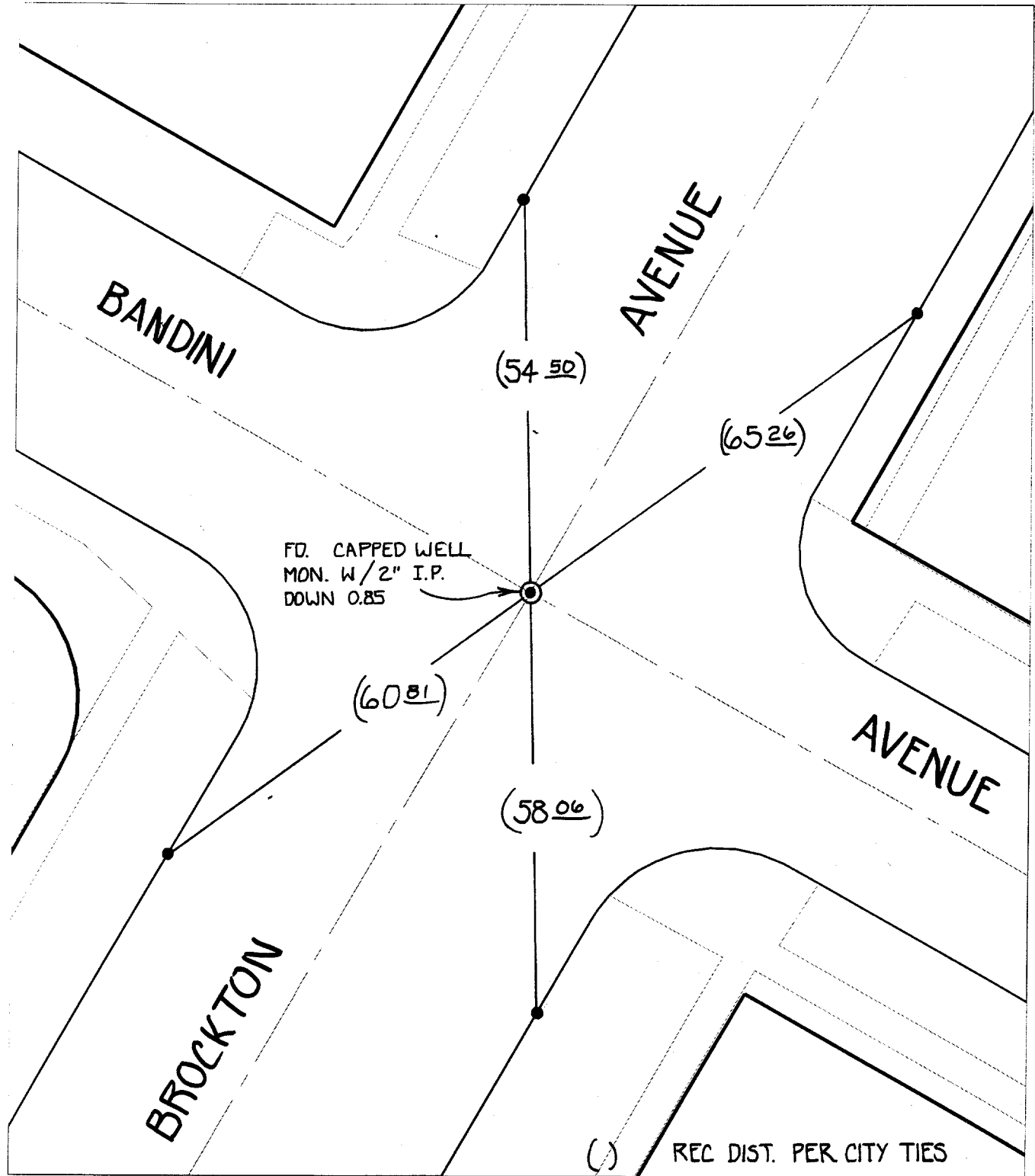


529.71



FD. CAPPED WELL  
 MON. W/2" I.P.  
 DOWN 0.85

(54.50)

(65.26)

(60.81)

(58.06)

( ) REC. DIST. PER CITY TIES

- ✕ FD. Ramset Nail on T/C
- FD. "C" Nail on T/C

- FD. LD. & TK. on T/C
- Set LD. & TK. on T/C

Street: BROCKTON AVENUE  
 X-Street: BANDINI AVENUE  
 OFFICIAL USE ONLY

Scale: 1" = 20'  
 Date: 04/20/00  
 Drawn by: SURVEY  
 W.O.:  
 F.B.:

## OFFICIAL TIE PLAT

### CITY OF RIVERSIDE

*These ties are for the purpose of perpetuating the found monumentation. No claim is made as to the relationship of the points or lines shown hereon to true boundary locations.*



Sheet 1 of 1  
 File No.: