

5293.TIF

Street: MESCALE

OFFICIAL USE ONLY

X-Street:

GARFIELD

Mescale Dr.

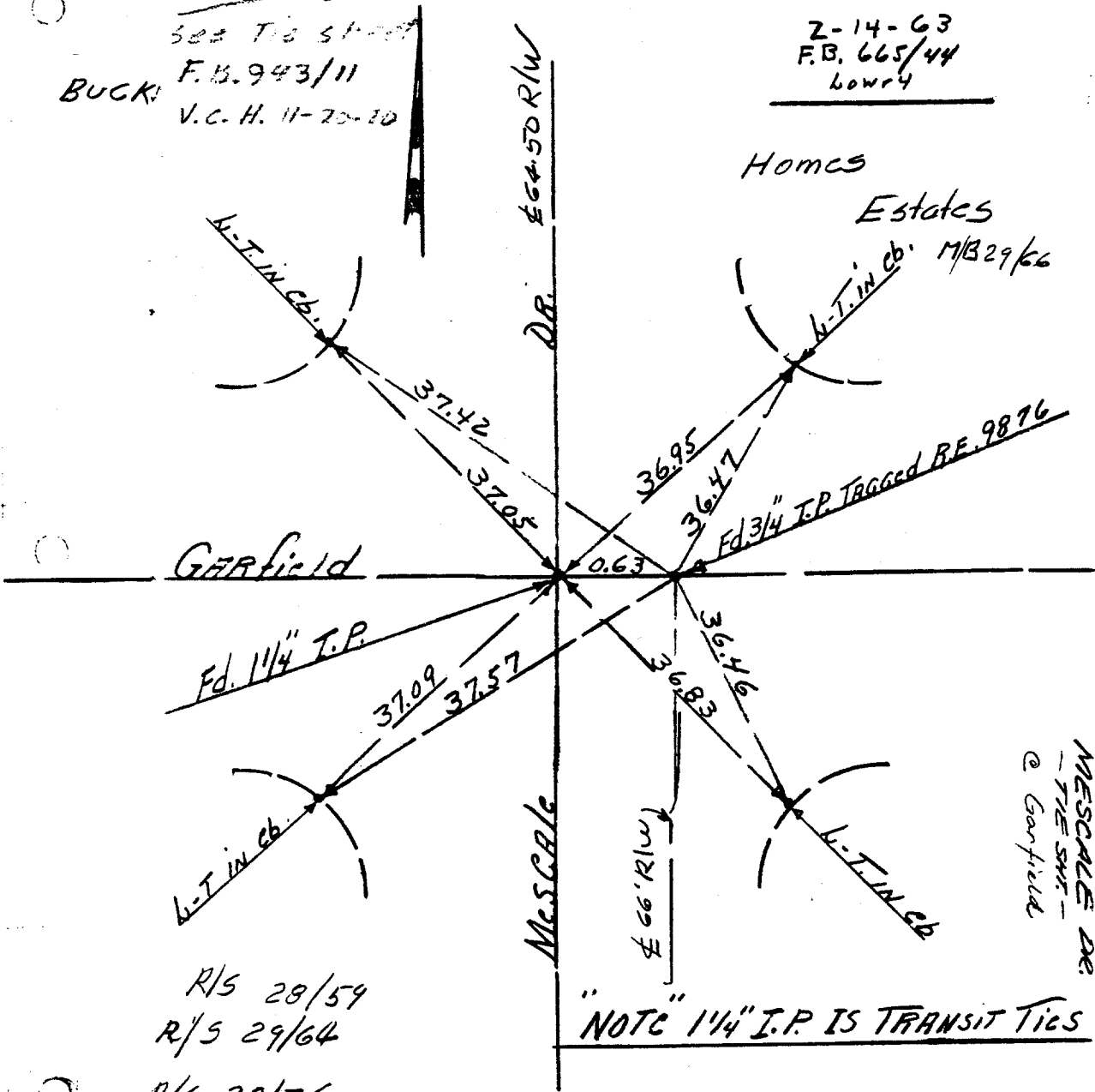
VOID

See Tie sheet  
F.B. 943/11  
BUCK  
V.C.H. 11-20-80

2-14-63  
F.B. 665/44  
Lowry

Homes

Estates



R/S 28/59  
R/S 29/64  
R/S 29/76

"NOTE" 1 1/4" I.P. IS TRANSIT TIES

MESCALE DR.  
- THE SHIP -  
@ Garfield

- ✕ FD. Ramset Nail on T/C
- FD. "C" Nail on T/C

- FD. LD. & TK. on T/C
- Set LD. & TK. on T/C

Scale:  
Date:  
Drawn by:  
W.O.:  
F.B.:

**OFFICIAL TIE PLAT**  
**CITY OF RIVERSIDE**

These ties are for the purpose of perpetuating the found monumentation. No claim is made as to the relationship of the points or lines shown hereon to true boundary locations.

Sheet 1 of 1  
File No.: