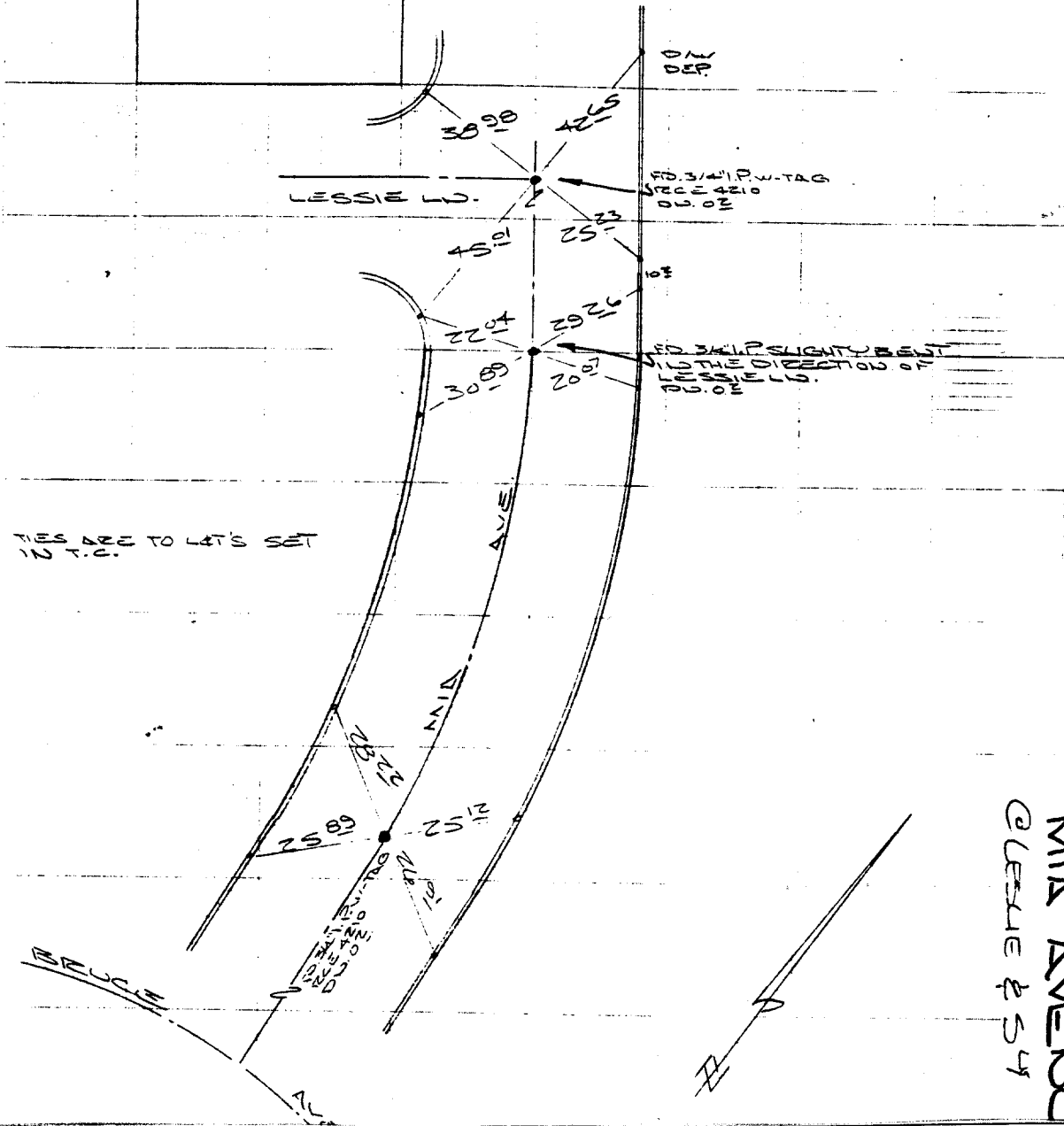


5304.TIF

SURVEY OF MIA AVE. & BRUCE INDEX LL11 PAGE 82
 SURVEYED BY GABRIEL KLOP STEPHENS DATE JAN 19, 1988

HISTORICAL DATA TRANSIT TIES



SERVICED NO 7036

THIS ARE TO LET'S SET
 10 P.M.

FD 3/4\"/>

FD 3/4\"/>

MIA AVENUE
 @ LESSIE & 54

Street: MIA AVENUE X-Street: LESSIE & BRUCE
 OFFICIAL USE ONLY

- ✕ FD. Ramset Nail on T/C
- FD. LD. & TK. on T/C
- FD. "C" Nail on T/C
- Set LD. & TK. on T/C

Scale:
 Date:
 Drawn by:
 W.O.:
 F.B.:

OFFICIAL TIE PLAT
CITY OF RIVERSIDE

These ties are for the purpose of perpetuating the found monumentation. No claim is made as to the relationship of the points or lines shown hereon to true boundary locations.

Sheet 1 of 1
 File No.: