
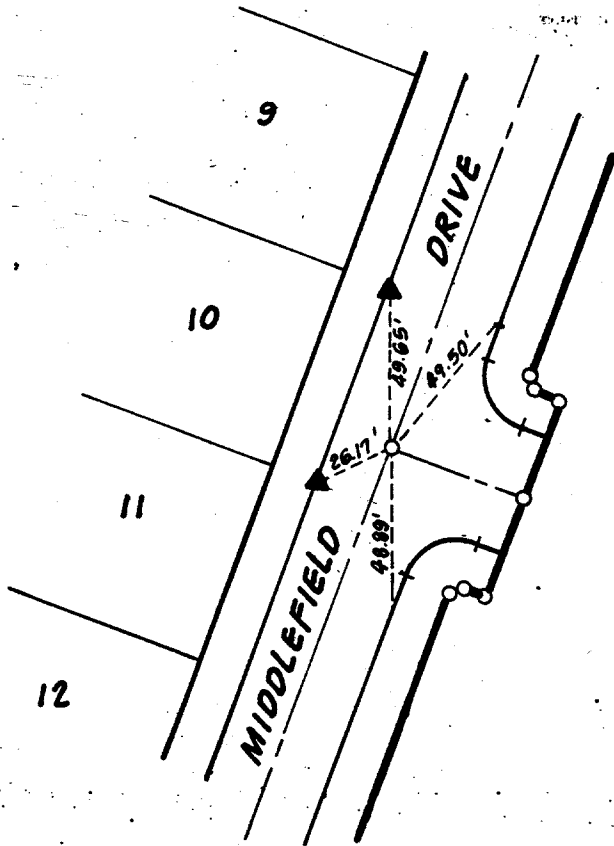


5321.TIF



 ADKAN ENGINEERS <small>(A PROFESSIONAL CORPORATION)</small> 4830 Airways Drive Riverside, California 92504 7141688-0241	DATE: 4/6/90	SCALE: 1"=60'	JOB NO: 3057	CLIENT: GRIFFITH HOMES
	GRIFFITH HOMES		CENTERLINE TIES	



LEGEND:

▲ DENOTES TIE AT PROPERTY LINE SET WITH NAIL AND TAG L.S. 5390 ON TOP OF CURB

NOTE: (ALL OTHER TIES SHOWN ARE SET WITH L&T ON TOP OF CURB)

- ✕ FD. Ramset Nail on T/C
- FD. "C" Nail on T/C
- FD. LD. & TK. on T/C
- Set LD. & TK. on T/C

Street: MIDDLEFIELD DR.

OFFICIAL USE ONLY X-Street: _____

Scale:
Date:
Drawn by:
W.O.:
F.B.:

OFFICIAL TIE PLAT
CITY OF RIVERSIDE

These ties are for the purpose of perpetuating the found monumentation. No claim is made as to the relationship of the points or lines shown hereon to true boundary locations.

TRACT 21638-2

Sheet 1 of 1

File No.: