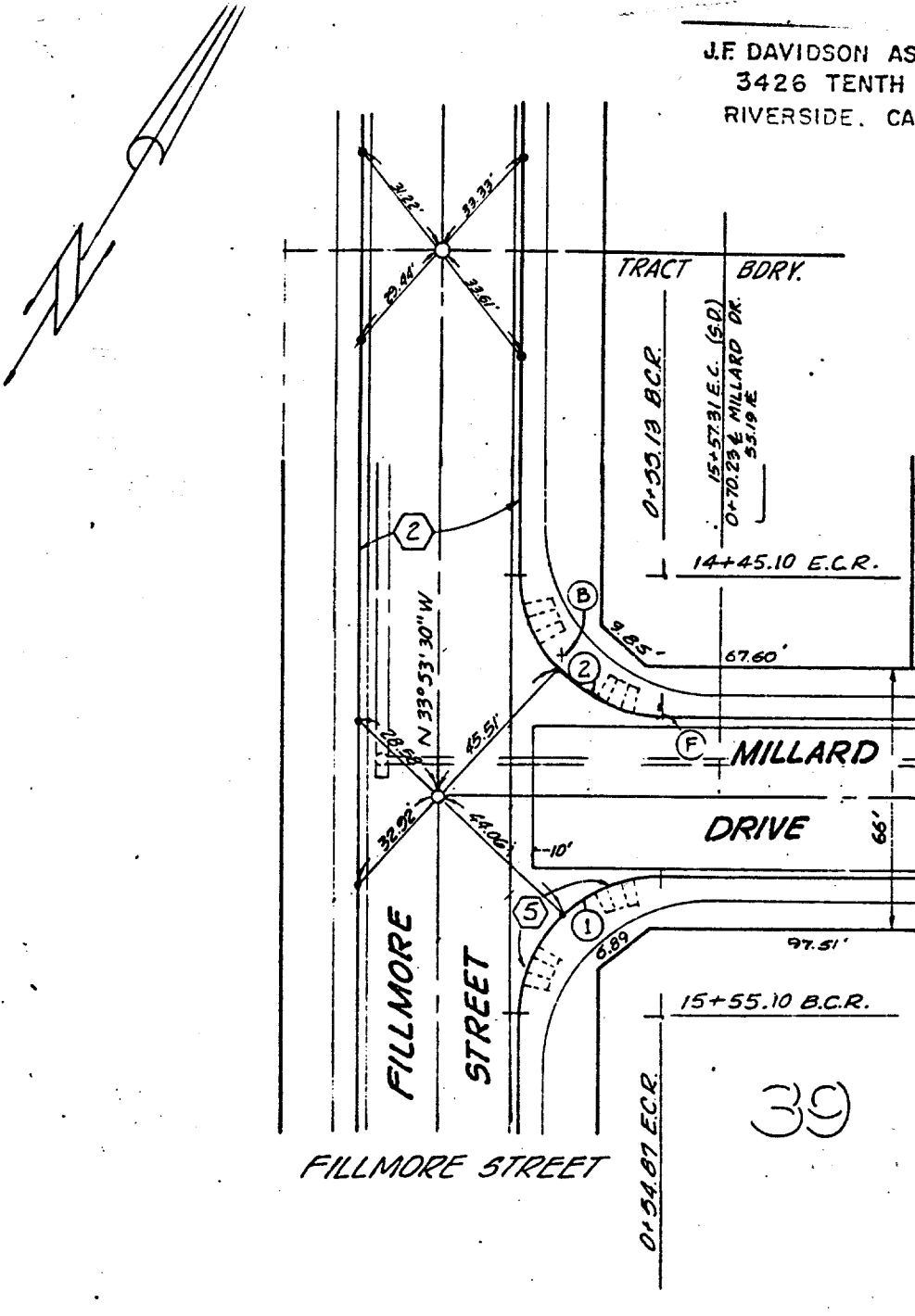


5333.TIF

Street: MILLARD DR. X-Street: FILLMORE ST.

OFFICIAL USE ONLY

J.F. DAVIDSON ASSOCIATES
3426 TENTH STREET
RIVERSIDE, CALIFORNIA



- Indicates Set Nail on Curb.
- Indicates 3/4" I.P. w/ plastic plug stamped R.C.E. 862, Flush

- ✕ FD. Ramset Nail on T/C
- FD. LD. & TK. on T/C
- FD. "C" Nail on T/C
- Set LD. & TK. on T/C

MILLARD @ FILLMORE

Scale: 1" = 40'
Date: 2-28-79
Drawn by:
W.O.:
F.B.:

OFFICIAL TIE PLAT

CITY OF RIVERSIDE

These ties are for the purpose of perpetuating the found monumentation. No claim is made as to the relationship of the points or lines shown hereon to true boundary locations.

TR 8898-1

Sheet 4 of 6
File No.: