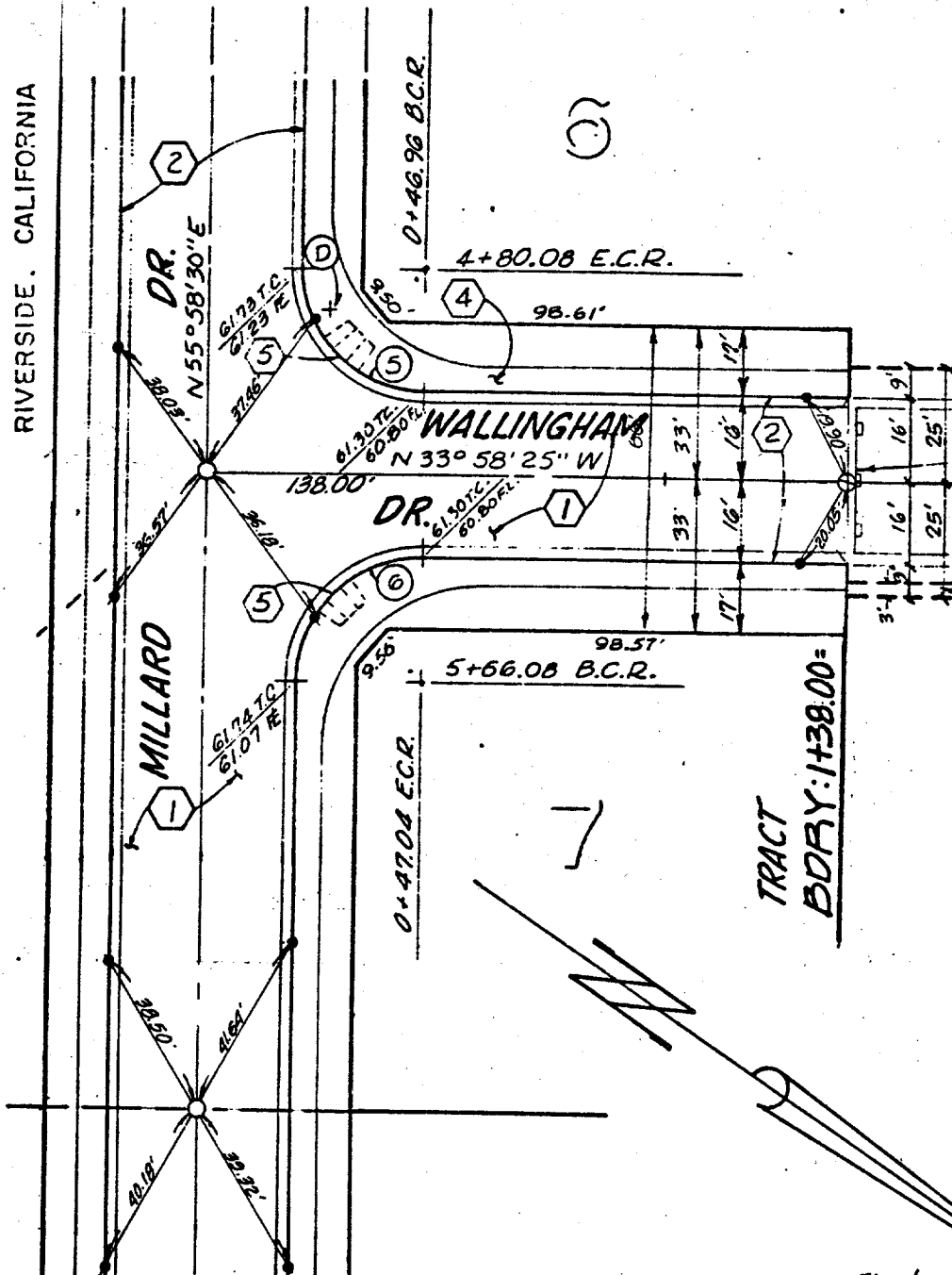


5337. TIF

J.F. DAVIDSON ASSOCIATES
3426 TENTH STREET
RIVERSIDE, CALIFORNIA



- Indicates 3/4" I.P. with plastic plug stamped R.C.E. 862, Flush
- ⊗ Indicates 2"x2" Tagged R.C.E. 862, Flush, over N&T in conc., Dn. 1.5'
- Indicates Set Nail on Curb.

- × FD. Ramset Nail on T/C
- FD. LD. & TK. on T/C
- FD. "C" Nail on T/C
- Set LD. & TK. on T/C

Street: MILLARD DR X-Street: WALLINGHAM DR.

OFFICIAL USE ONLY

Scale: 1"=40'
Date: 2/28/79
Drawn by:
W.O.:
F.B.:

OFFICIAL TIE PLAT
CITY OF RIVERSIDE

These ties are for the purpose of perpetuating the found monumentation. No claim is made as to the relationship of the points or lines shown hereon to true boundary locations.

TR 8898-1

Sheet 3 of 6

File No.: