

5344.TIP

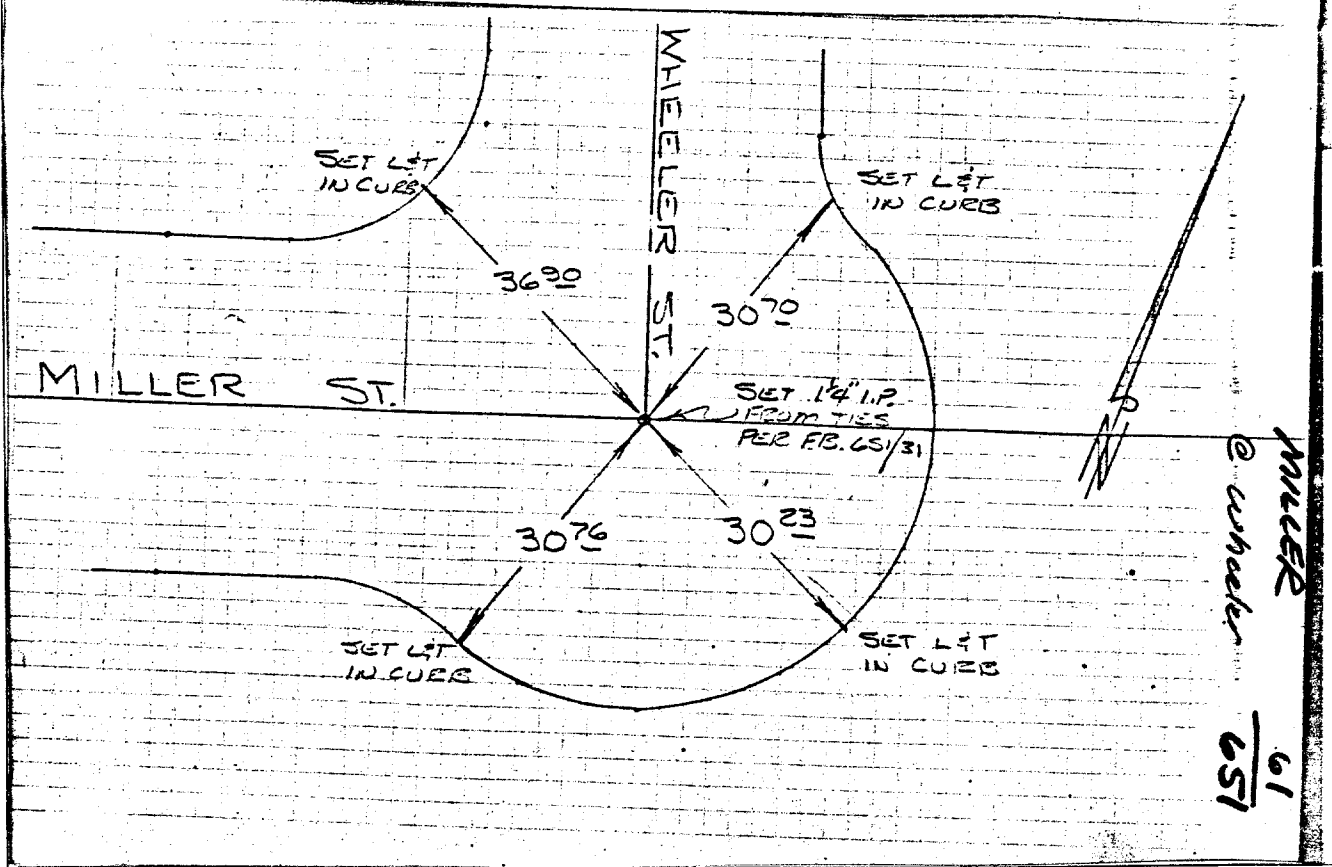
WHEELER ST.  
AT  
MILLER ST.

HISTORICAL  
DATA  
F.B. 65/31

TRANSIT TIES

CREW  
STEELE  
SIMPSON  
MORGAN

1-3-68  
F.B. 65/61



✕ FD. Ramset Nail on T/C  
■ FD. "C" Nail on T/C

● FD. LD. & TK. on T/C  
○ Set LD. & TK. on T/C

Street: MILLER ST.  
X-Street: WHEELER ST.  
OFFICIAL USE ONLY

MILLER  
61  
65/

Scale:  
Date:  
Drawn by:  
W.O.:  
F.B.:

**OFFICIAL TIE PLAT**  
**CITY OF RIVERSIDE**

*These ties are for the purpose of perpetuating the found monumentation. No claim is made as to the relationship of the points or lines shown hereon to true boundary locations.*

Sheet 1 of 1  
File No.: