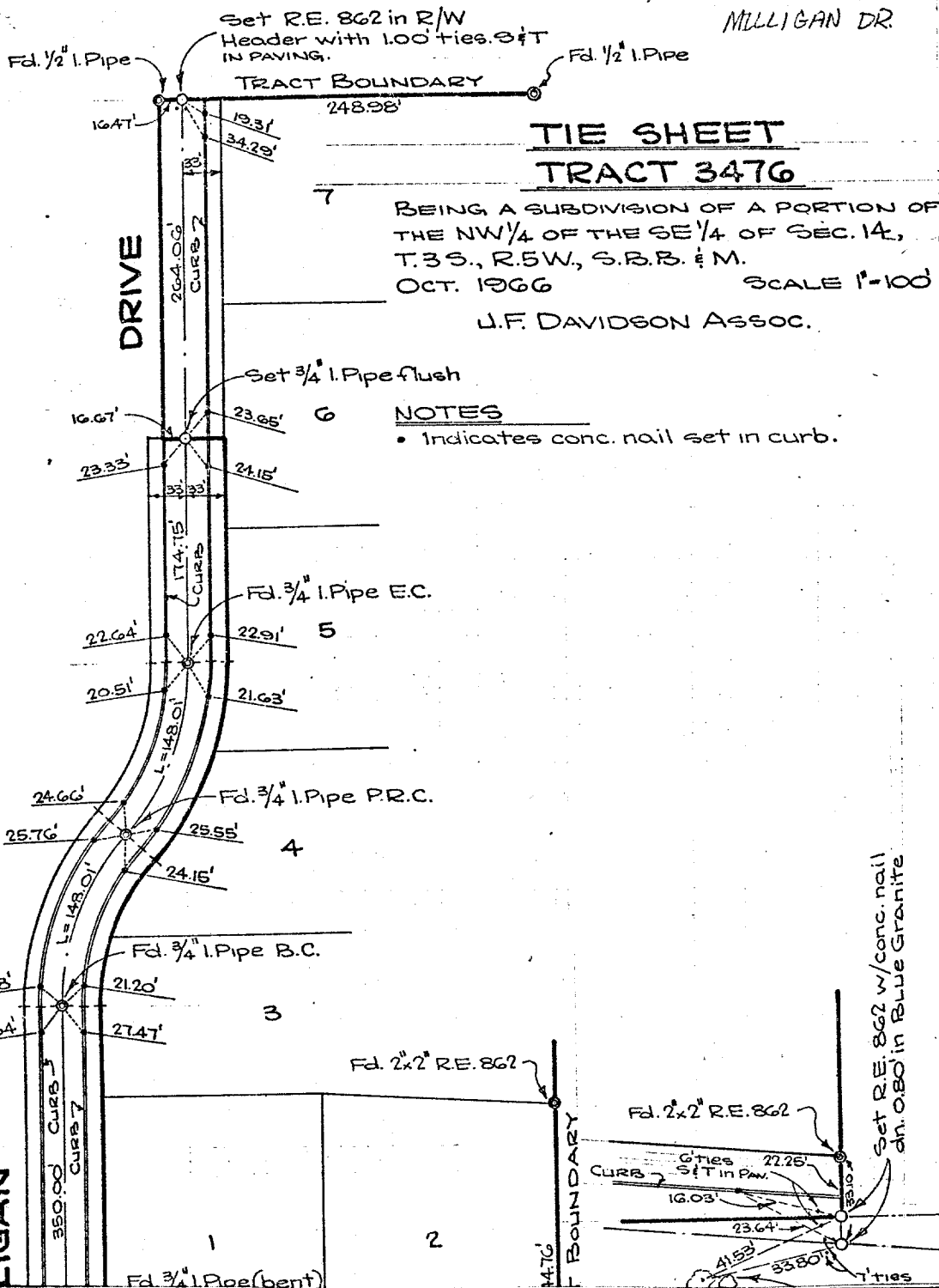


5347.TIF

Street: MILLIGAN DR N/O X-Street: HIGHRIDGE ST

OFFICIAL USE ONLY



TIE SHEET TRACT 3476

BEING A SUBDIVISION OF A PORTION OF THE NW 1/4 OF THE SE 1/4 OF SEC. 14, T.3S., R.5W., S.B.B. & M. OCT. 1966 SCALE 1"=100' U.F. DAVIDSON ASSOC.

NOTES

- Indicates conc. nail set in curb.

- ✕ FD. Ramset Nail on T/C
- FD. LD. & TK. on T/C
- FD. "C" Nail on T/C
- Set LD. & TK. on T/C

Scale:
 Date:
 Drawn by:
 W.O.:
 F.B.: 966 P.G. 46

OFFICIAL TIE PLAT

CITY OF RIVERSIDE

These ties are for the purpose of perpetuating the found monumentation. No claim is made as to the relationship of the points or lines shown hereon to true boundary locations.

Sheet 1 of 1
 File No.: