

5356.TIF

MINERVA CT  
&  
AGATHA LN.

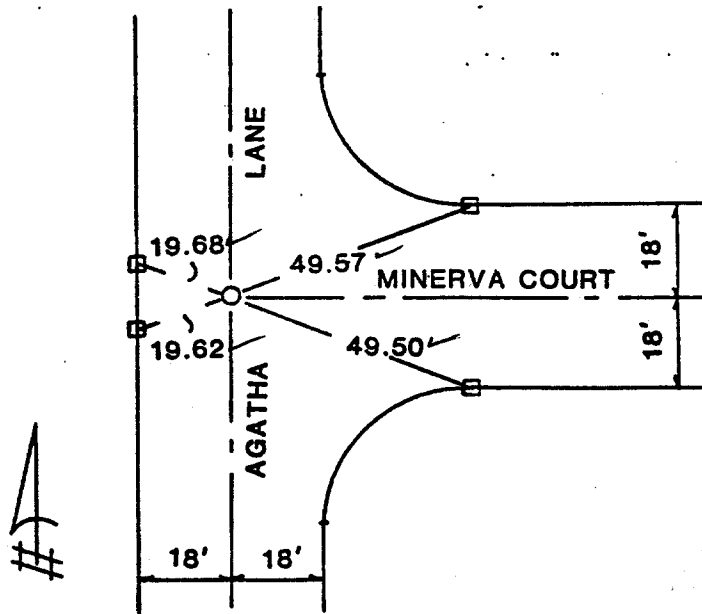
Street: MINERVA CT E/O X-Street: AGATHA LN.  
OFFICIAL USE ONLY

CENTERLINE TIES

TRACT 10071-1 AUG. 1983

AGATHA LANE & MINERVA COURT

- Indicates set 1" I.P. tagged RCE 23056 flush
- Indicates set lead & tack in curb



- × FD. Ramset Nail on T/C
- FD. LD. & TK. on T/C
- FD. "C" Nail on T/C
- Set LD. & TK. on T/C

Scale:  
Date:  
Drawn by:  
W.O.:  
F.B.:

**OFFICIAL TIE PLAT**  
**CITY OF RIVERSIDE**

*These ties are for the purpose of perpetuating the found monumentation. No claim is made as to the relationship of the points or lines shown hereon to true boundary locations.*

Sheet 1 of 1  
File No.: