

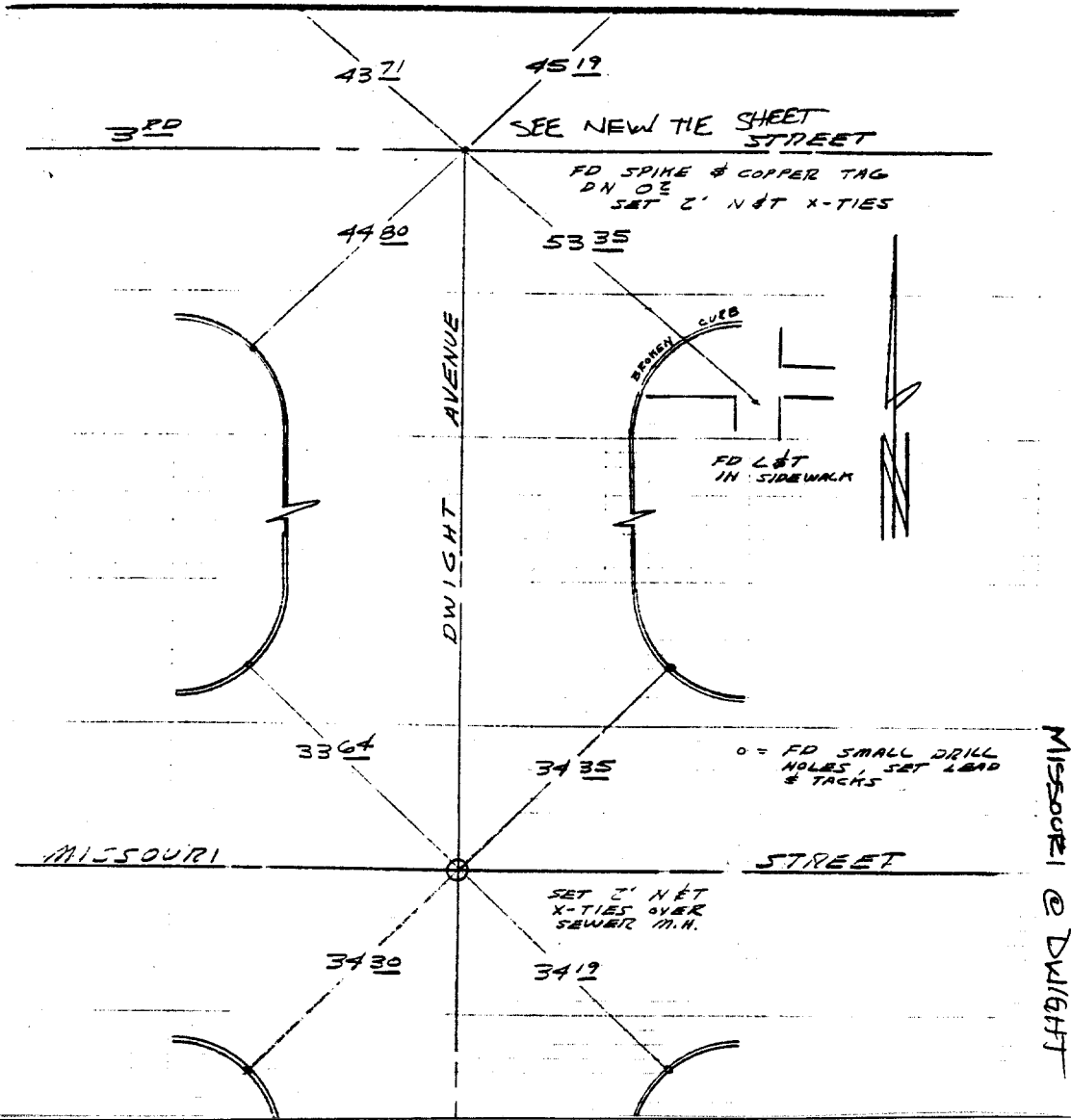
5364.T1F

SURVEY OF 3<sup>RD</sup> ST. @ DWIGHT AVE INDEX 23 PAGE 23A  
SURVEYED BY ROBIN, CANNAROZZI DATE 20 DEC 83

HISTORICAL DATA  
CRFB 610/70

TRANSIT TIES

• = FD LEAD & TACK  
IN TOP OF CURB



Street: MISSOURI ST  
X-Street: DWIGHT AVE  
OFFICIAL USE ONLY

- ✕ FD. Ramset Nail on T/C
- FD. LD. & TK. on T/C
- FD. "C" Nail on T/C
- Set LD. & TK. on T/C

Scale: \_\_\_\_\_  
 Date: \_\_\_\_\_  
 Drawn by: \_\_\_\_\_  
 W.O.: \_\_\_\_\_  
 F.B.: \_\_\_\_\_

**OFFICIAL TIE PLAT**  
**CITY OF RIVERSIDE**

*These ties are for the purpose of perpetuating the found monumentation. No claim is made as to the relationship of the points or lines shown hereon to true boundary locations.*

Sheet 1 of 1  
 File No.: \_\_\_\_\_