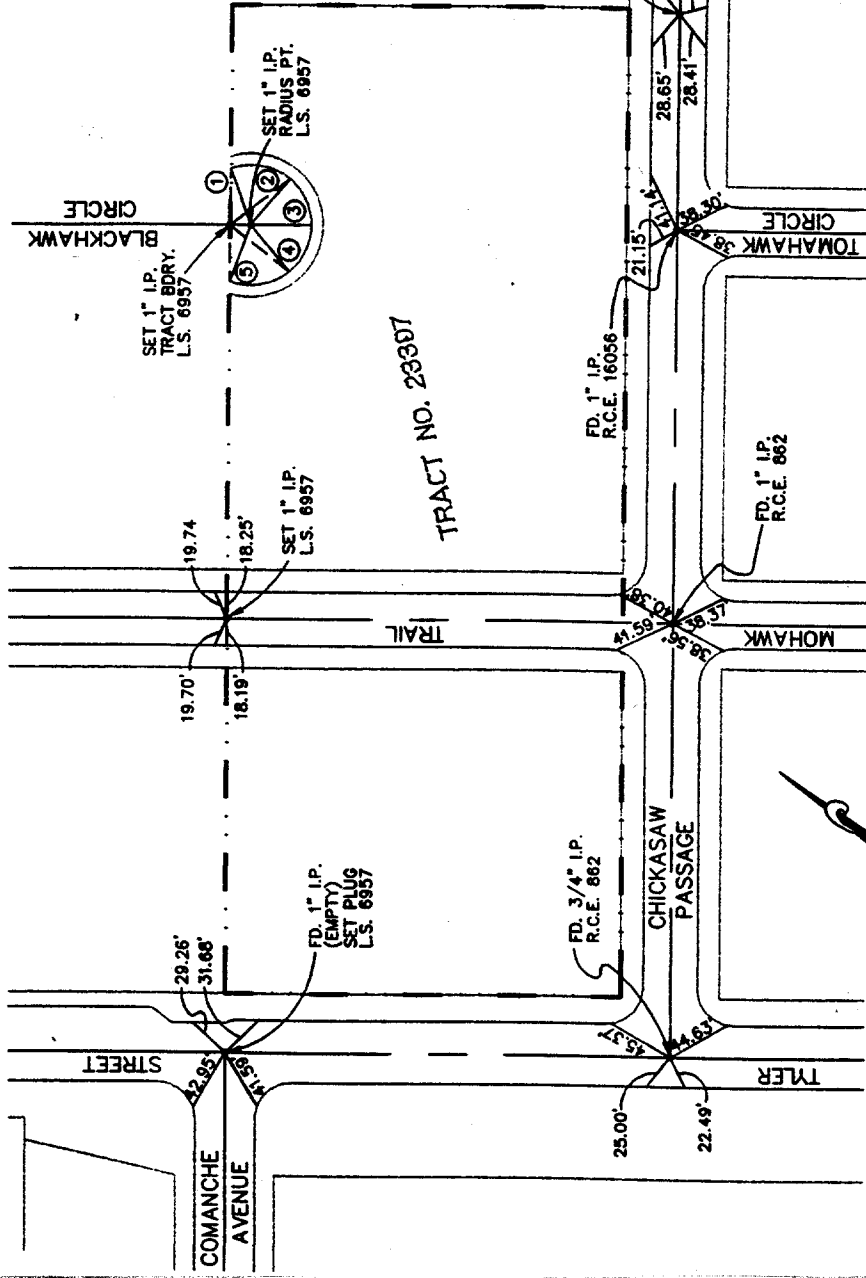


5375, TIF

MOHAWK TRAIL
CHICKASAW PASSAGE

- ① 37.59' TR. BDRY.
- ② 40.19' RAD. PT.
- ③ 50.42' TR. BDRY.
- ④ 40.18' RAD. PT.
- ⑤ 54.42' TR. BDRY.
- ⑥ 40.20' TR. BDRY.
- ⑦ 50.47' TR. BDRY.
- ⑧ 40.24' RAD. PT.
- ⑨ 37.70' TR. BDRY.
- ⑩ 40.30' RAD. PT.



CROUSE/BEERS & ASSOCIATES, INC. JRA
 Civil Engineering x Surveying x Planning
 1700 HAMMER AVENUE, SUITE 104
 NORCO, CA 91760 (909) 736-2040 FAX (909) 736-5292

TRACT NO. 23397 - C.L. TIES

SCALE: 1" = 100'

NOTE: ALL TIE POINTS ARE RAMSET NAILS IN T.C.

- ✕ FD. Ramset Nail on T/C
- FD. LD. & TK. on T/C
- FD. "C" Nail on T/C
- Set LD. & TK. on T/C

Scale:
 Date:
 Drawn by:
 W.O.:
 F.B.:

OFFICIAL TIE PLAT
CITY OF RIVERSIDE

These ties are for the purpose of perpetuating the found monumentation. No claim is made as to the relationship of the points or lines shown hereon to true boundary locations.

Sheet 1 of 1
 File No.:

Street: **MOHAWK TRAIL**
 X-Street: **CHICKASAW PASSAGE**
 OFFICIAL USE ONLY