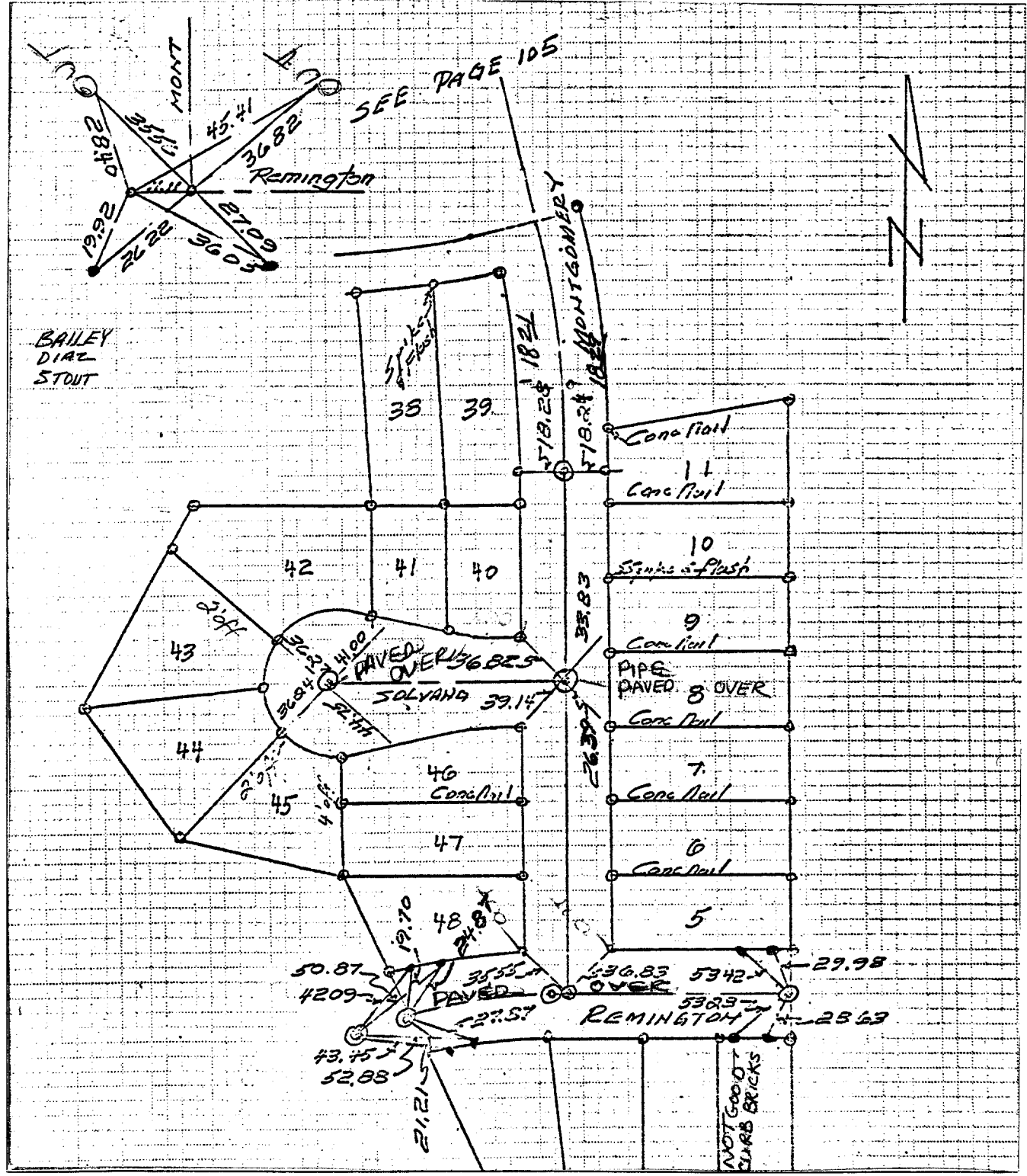


Street: MONTGOMERY N/O X-Street: SOLVANA & REMINGTON
OFFICIAL USE ONLY



- ✗ FD. Ramset Nail on T/C
- FD. "C" Nail on T/C
- FD. LD. & TK. on T/C
- Set LD. & TK. on T/C

Scale:
 Date: 2-23-72
 Drawn by:
 W.O.:
 F.B.: 1018

OFFICIAL TIE PLAT CITY OF RIVERSIDE

These ties are for the purpose of perpetuating the found monumentation. No claim is made as to the relationship of the points or lines shown hereon to true boundary locations.

TR 4147

Sheet 1 of 1
 File No.: