

5416.TIF

Street: MOORGATE PLACE

OFFICIAL USE ONLY

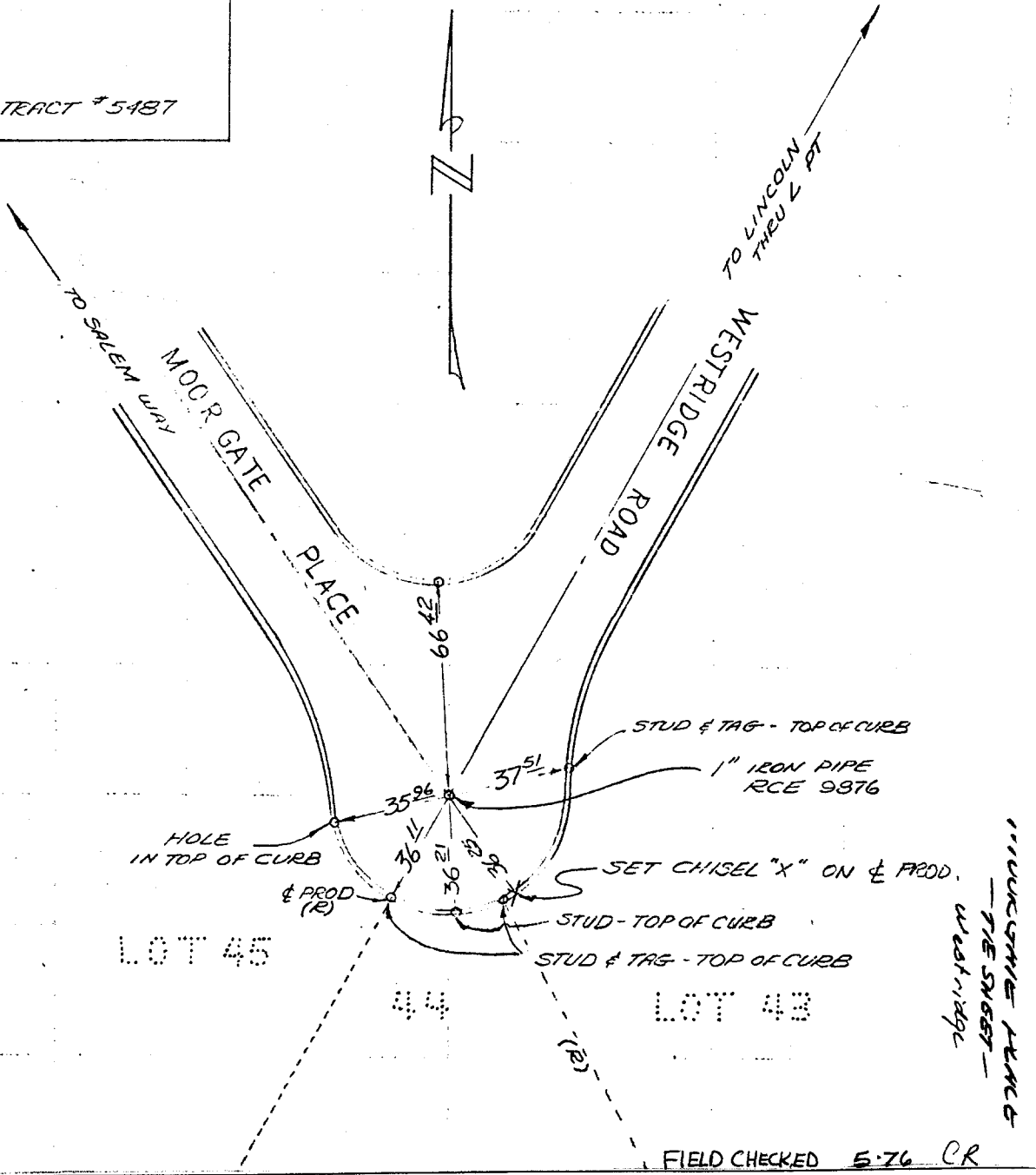
X-Street: WEST RIDGE RD.

HISTORICAL DATA
A. WEBB FB 1032/134

TRANSIT TIES

TRACT # 5487

WESTRIDGE ROAD
@ MOORGATE PLACE



- ✕ FD. Ramset Nail on T/C
- FD. LD. & TK. on T/C
- FD. "C" Nail on T/C
- Set LD. & TK. on T/C

Scale:
Date:
Drawn by:
W.O.:
F.B.:

OFFICIAL TIE PLAT

CITY OF RIVERSIDE

These ties are for the purpose of perpetuating the found monumentation. No claim is made as to the relationship of the points or lines shown hereon to true boundary locations.

Sheet 1 of 1
File No.:

"INCORPORATE PLANS & TIE SHEET" - Westridge

FIELD CHECKED 5-76 CR