

5443.TIF

Street: Mountain Ave

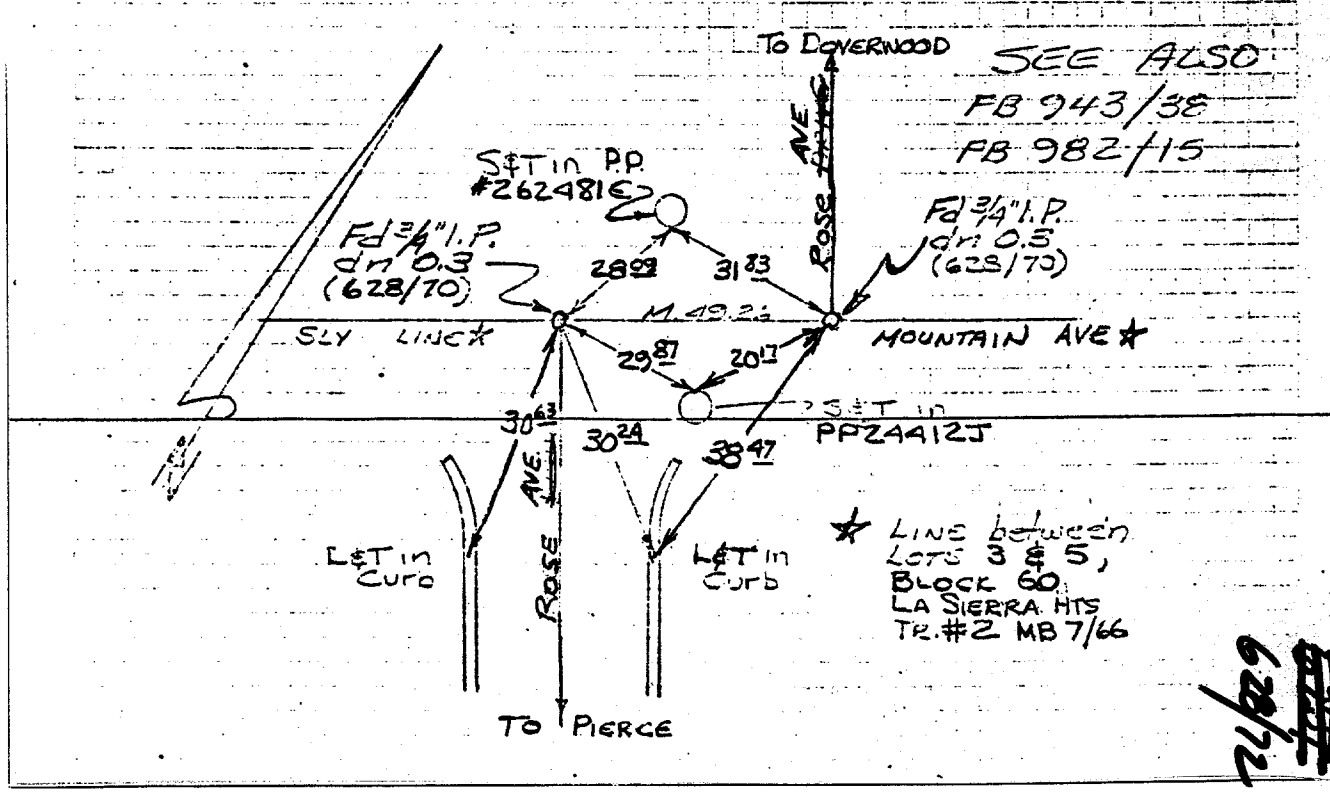
X-Street: Rose Ave

OFFICIAL USE ONLY

ROSE AVE AT MOUNTAIN AVE
SWING TIES

HISTORICAL DATA
1. FB 628/70
2. Co. FB 836/54
3. Aders SUE.

CREW: HUTCHINSON THORP
DATE: MAY 21, 1965



- ✕ FD. Ramset Nail on T/C
- FD. LD. & TK. on T/C
- FD. "C" Nail on T/C
- Set LD. & TK. on T/C

Scale:
Date:
Drawn by:
W.O.:
F.B.:

OFFICIAL TIE PLAT

CITY OF RIVERSIDE

These ties are for the purpose of perpetuating the found monumentation. No claim is made as to the relationship of the points or lines shown hereon to true boundary locations.

Sheet 1 of 1
File No.:

62912