

Scale: 1" = 25'
 Date: 09/17/97
 Drawn by: scurtis
 W.O.:
 F.B.:

OFFICIAL TIE PLAT

CITY OF RIVERSIDE

These ties are for the purpose of perpetuating the found monumentation. No claim is made as to the relationship of the points or lines shown hereon to true boundary locations.

File No.:
 Sheet 1 of 1



Street:

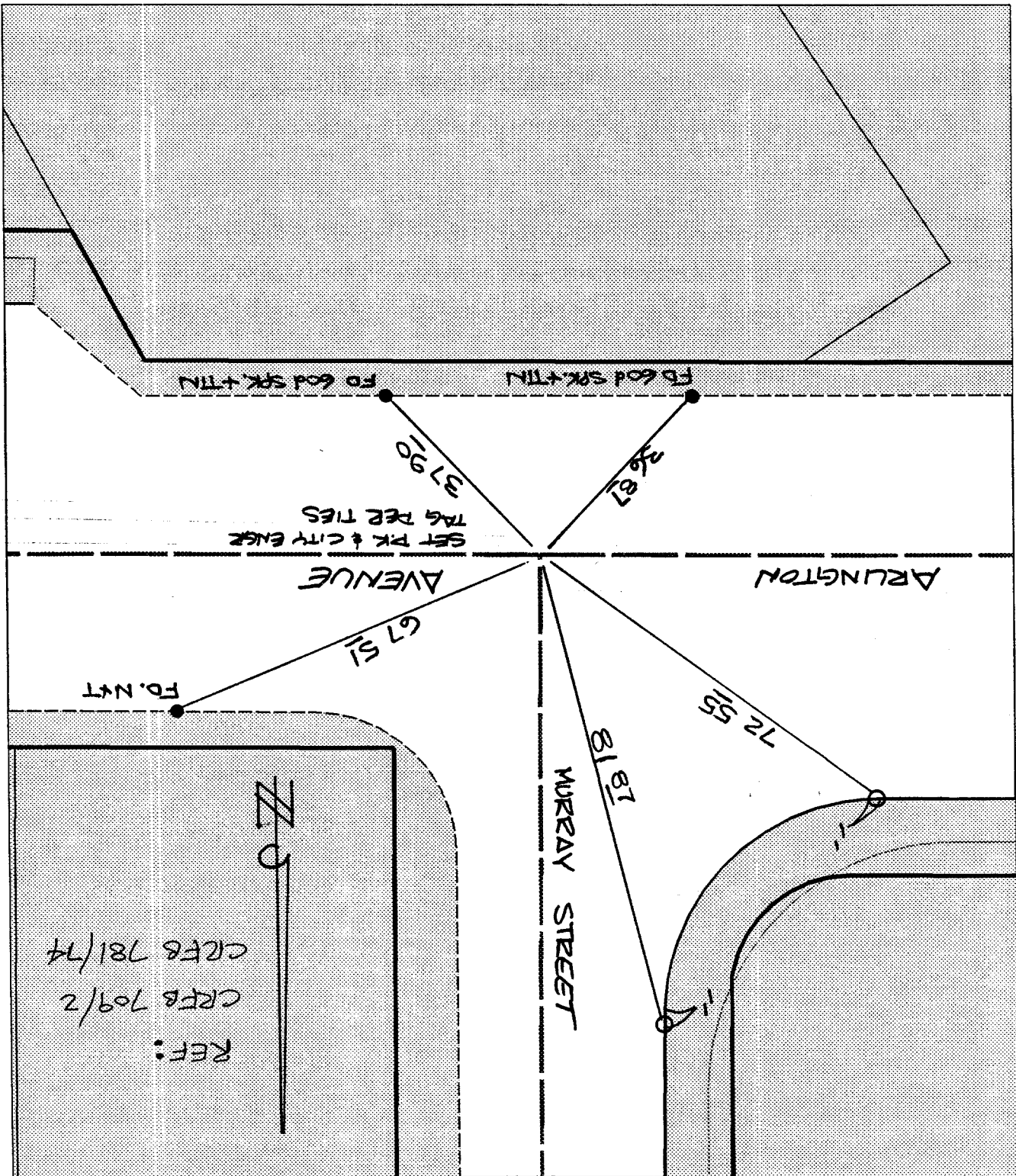
ARLINGTON AVE

X-Street:
 OFFICIAL USE ONLY

MURRAY STREET

5493.71/F
 X FD, Ramset Nail on T/C
 FD, "C" Nail on T/C

● FD, LD, & TK, on T/C
 ○ Set LD, & TK, on T/C



SWING TIES

REF:
 CREF 709/2
 CREF 781/74