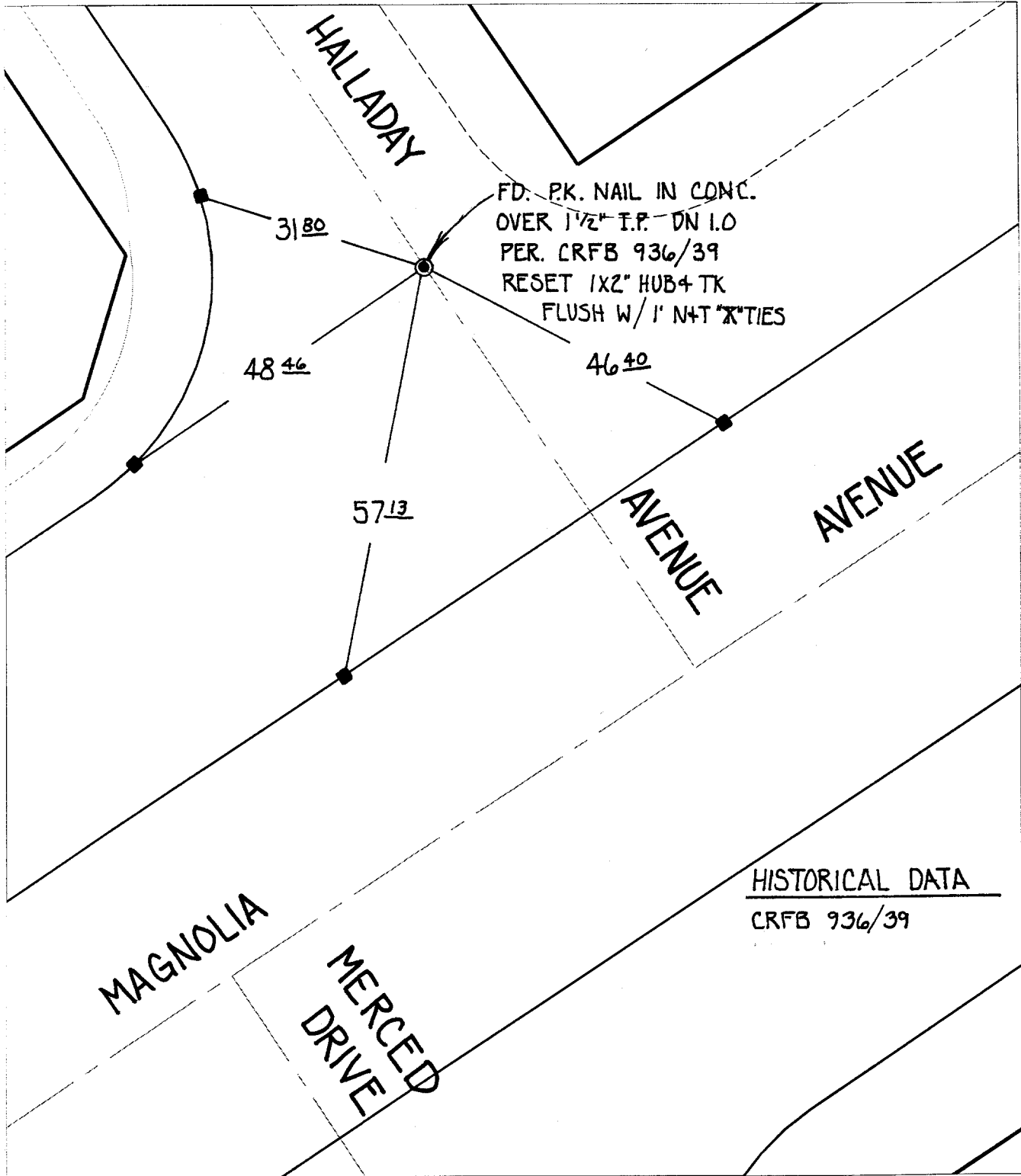


SWING TIES

5535.TIF



Street: MAGNOLIA AVENUE
 X-Street: HALLADAY AVENUE
 OFFICIAL USE ONLY

HISTORICAL DATA
 CRFB 936/39


- ✕ FD. Ramset Nail on T/C ● FD. LD. & TK. on T/C
- FD. "C" Nail on T/C ○ Set LD. & TK. on T/C

P.K. and City Engineer tag to be set @ surface after street construction is complete. (If possible)

Scale: 1" = 20'
 Date: 08/2400
 Drawn by: SURVEY
 W.O.:
 F.B.:

OFFICIAL TIE PLAT
CITY OF RIVERSIDE

These ties are for the purpose of perpetuating the found monumentation. No claim is made as to the relationship of the points or lines shown hereon to true boundary locations.



Sheet 1 of 1
 File No.: