

SWING TIES

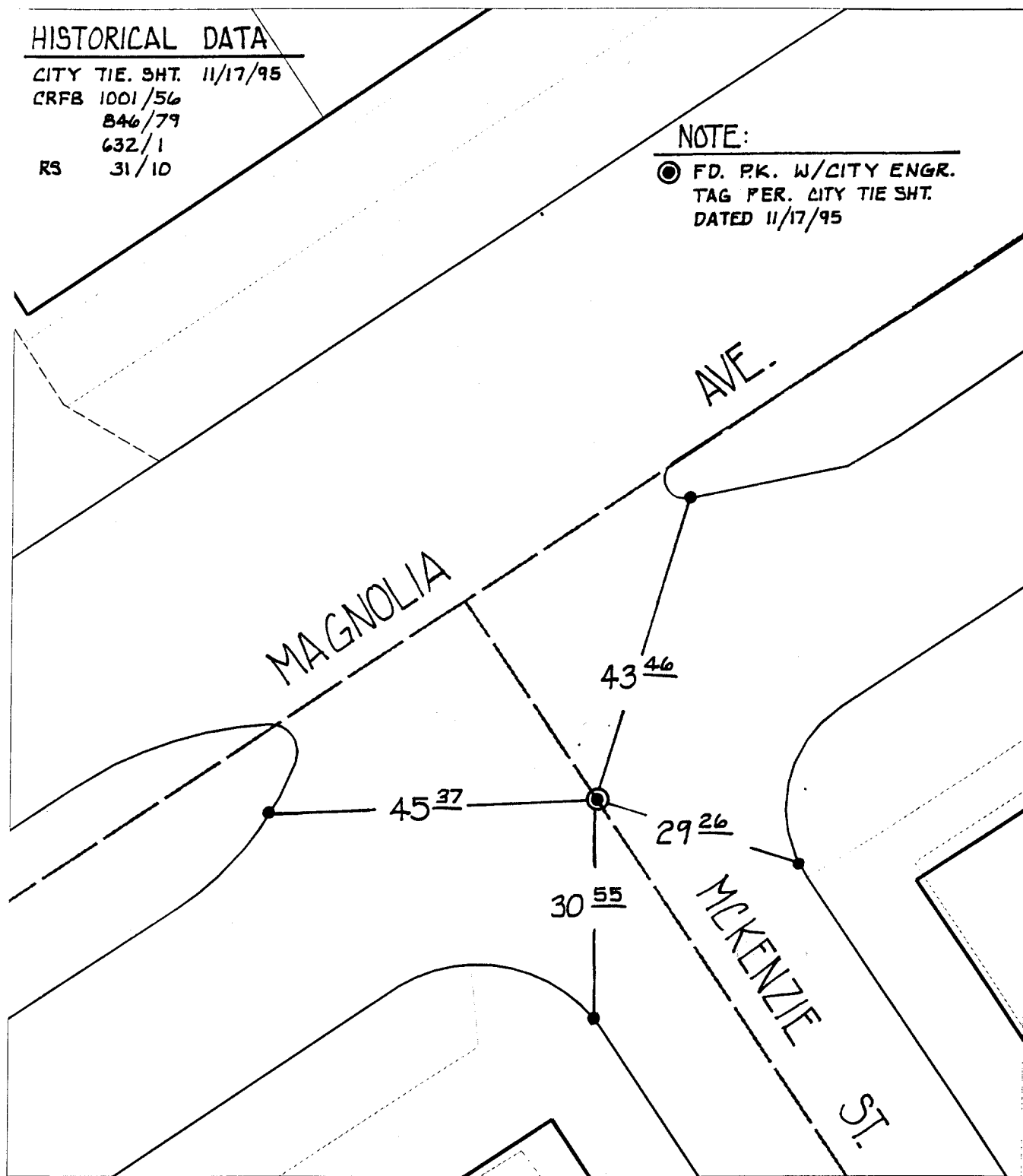
5553.TIF

HISTORICAL DATA

CITY TIE SHT. 11/17/95
 CRFB 1001/56
 846/79
 632/1
 RS 31/10

NOTE:

⊙ FD. P.K. W/CITY ENGR.
 TAG PER. CITY TIE SHT.
 DATED 11/17/95



Street:

MAGNOLIA AVE

OFFICIAL USE ONLY

X-Street:

MCKENZIE ST

× FD. Ramset Nail on T/C
 ■ FD. "C" Nail on T/C

● FD. LD. & TK. on T/C
 ○ Set LD. & TK. on T/C

Scale: 1" = 20'

Date: 11/23/99

Drawn by: scurtis

W.O.:

F.B.:

OFFICIAL TIE PLAT CITY OF RIVERSIDE

These ties are for the purpose of perpetuating the found monumentation. No claim is made as to the relationship of the points or lines shown hereon to true boundary locations.



Sheet 1 of 1

File No.:

49