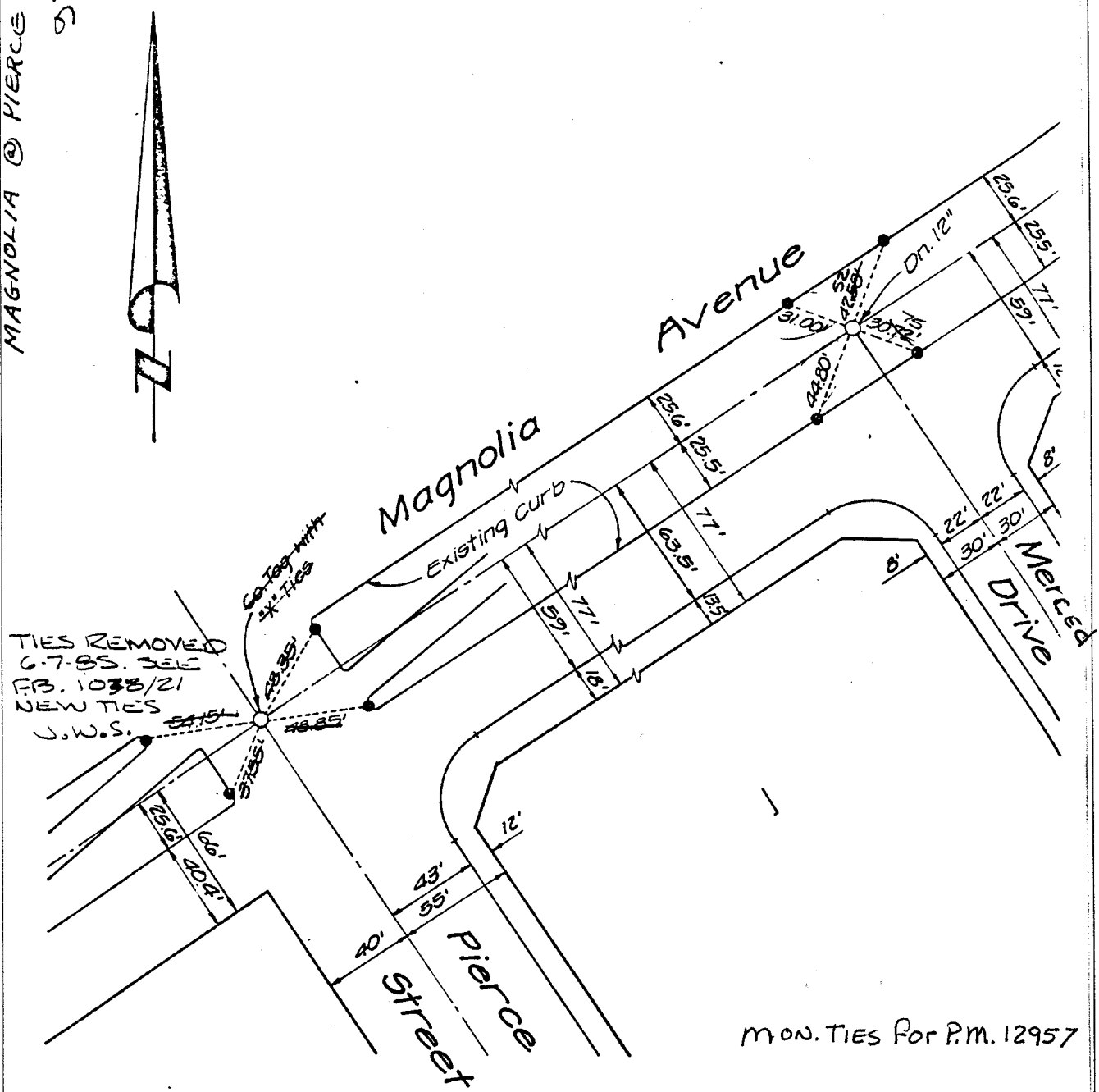


Street: MAGNOLIA AVE

OFFICIAL USE ONLY

X-Street: @ PIERCE ST

MAGNOLIA @ PIERCE
57



MON. TIES FOR P.M. 12957

○ Indicates 3/4" I.P. with plastic plug stamped L.S. 3018, flush, unless otherwise noted
 ● Indicates nail in top of curb, unless otherwise noted.

- ✕ FD. Ramset Nail on T/C
- FD. LD. & TK. on T/C
- FD. "C" Nail on T/C
- Set LD. & TK. on T/C

Scale: 1" = 60'
 Date: DEC 1981
 Drawn by:
 W.O.:
 F.B.:

OFFICIAL TIE PLAT

CITY OF RIVERSIDE

These ties are for the purpose of perpetuating the found monumentation. No claim is made as to the relationship of the points or lines shown hereon to true boundary locations.

Sheet 1 of 1
 File No.:

97