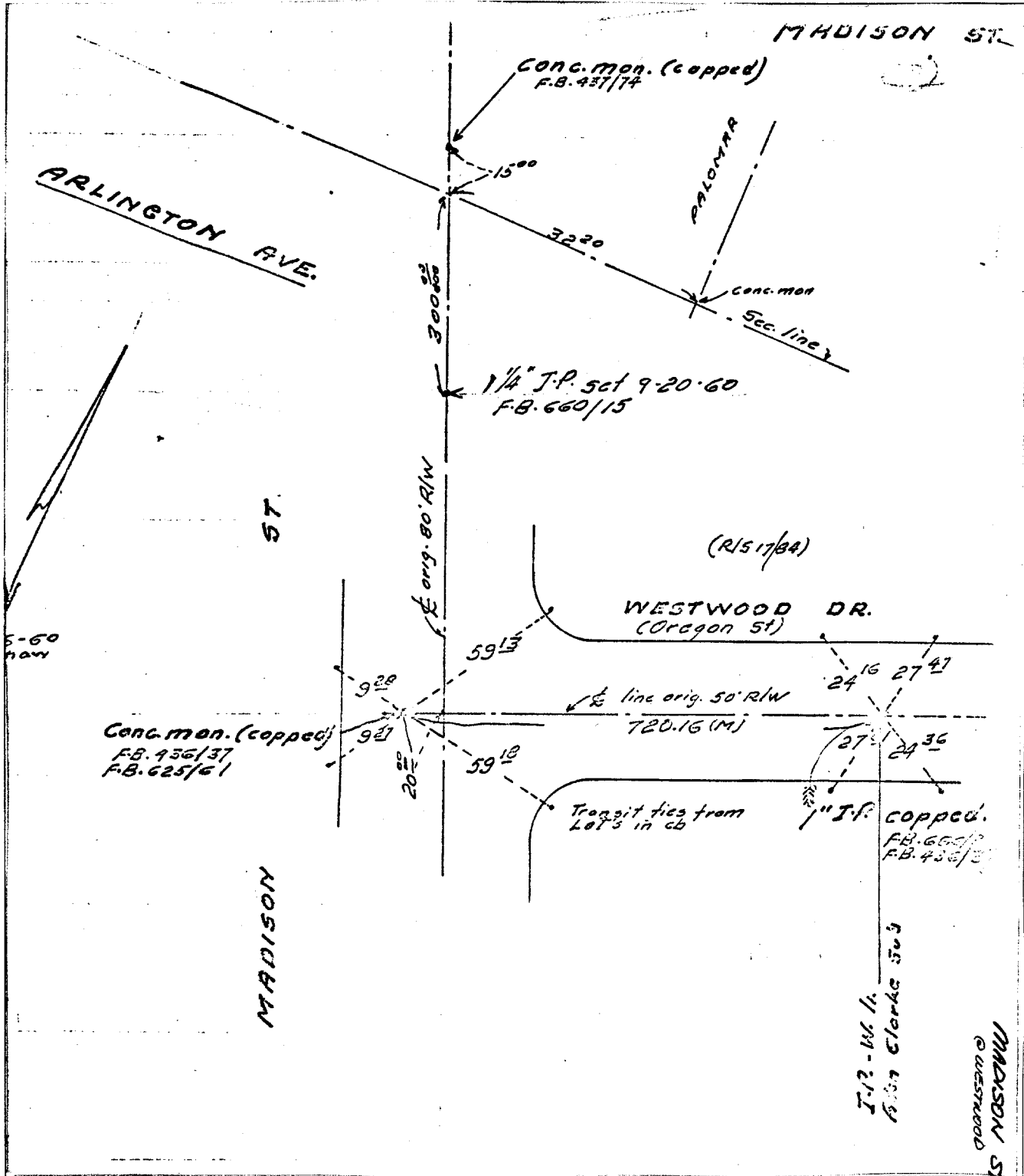


Street: MADISON ST.

OFFICIAL USE ONLY

X-Street: WESTWOOD & ARLINGTON

WESTWOOD & ARLINGTON



- ✕ FD. Ramset Nail on T/C
- FD. LD. & TK. on T/C
- FD. "C" Nail on T/C
- Set LD. & TK. on T/C

Scale: _____

Date: _____

Drawn by: _____

W.O.: _____

F.B.: _____

OFFICIAL TIE PLAT

CITY OF RIVERSIDE

These ties are for the purpose of perpetuating the found monumentation. No claim is made as to the relationship of the points or lines shown hereon to true boundary locations.

Sheet 1 of 1

File No.: _____