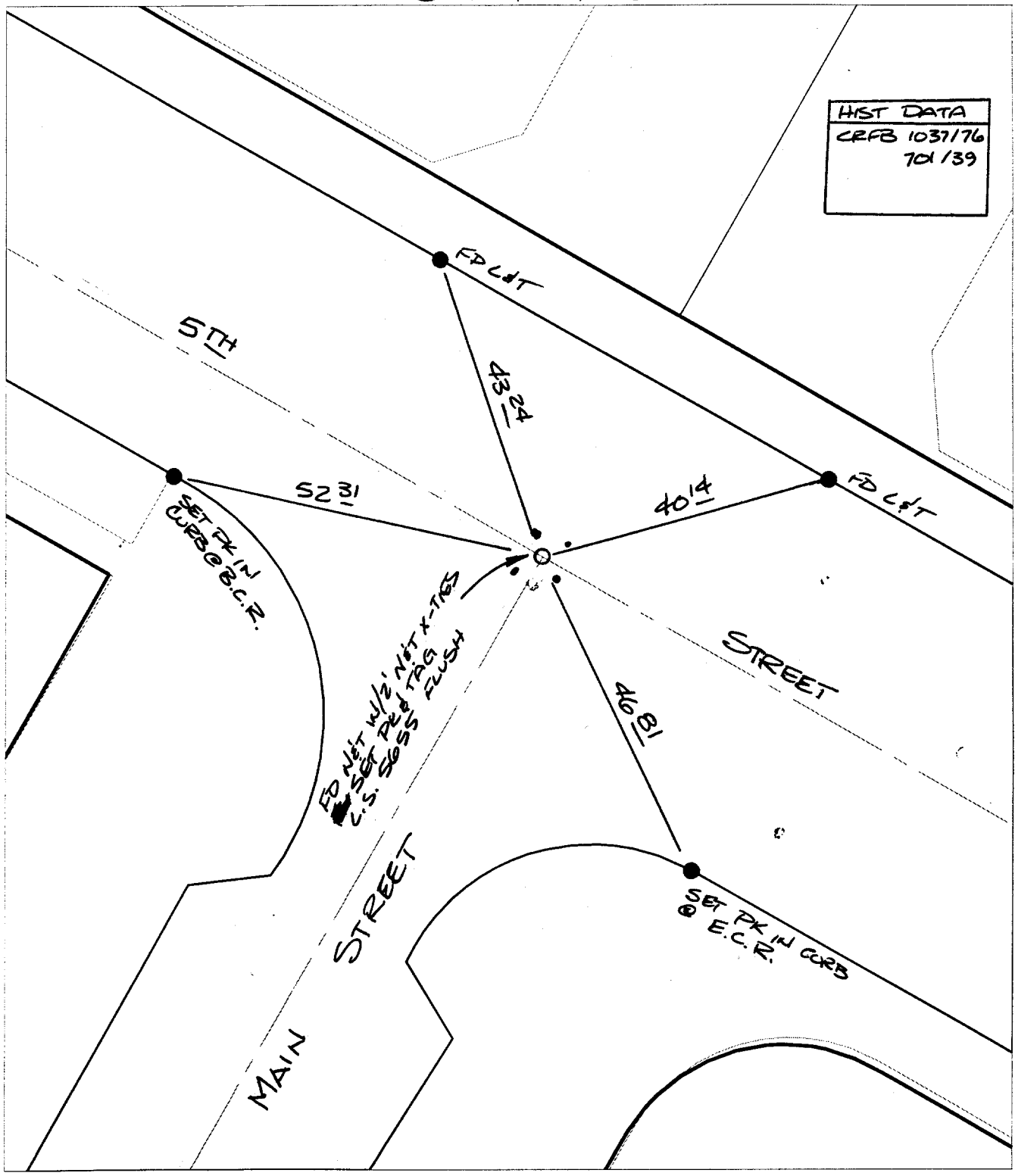


SWING TIES

HIST DATA
CRFB 1037/76
701/39



Street:

5TH ST

X-Street:
OFFICIAL USE ONLY

MAIN ST

- ✕ FD. Ramset Nail on T/C
- FD. LD. & TK. on T/C
- FD. "C" Nail on T/C
- Set LD. & TK. on T/C

Scale: 1" = 20'
Date: 07/25/00
Drawn by: scurtis
W.O.:
F.B.:

OFFICIAL TIE PLAT

CITY OF RIVERSIDE

These ties are for the purpose of perpetuating the found monumentation. No claim is made as to the relationship of the points or lines shown hereon to true boundary locations.



Sheet 1 of 1
File No.:

72 MAIN