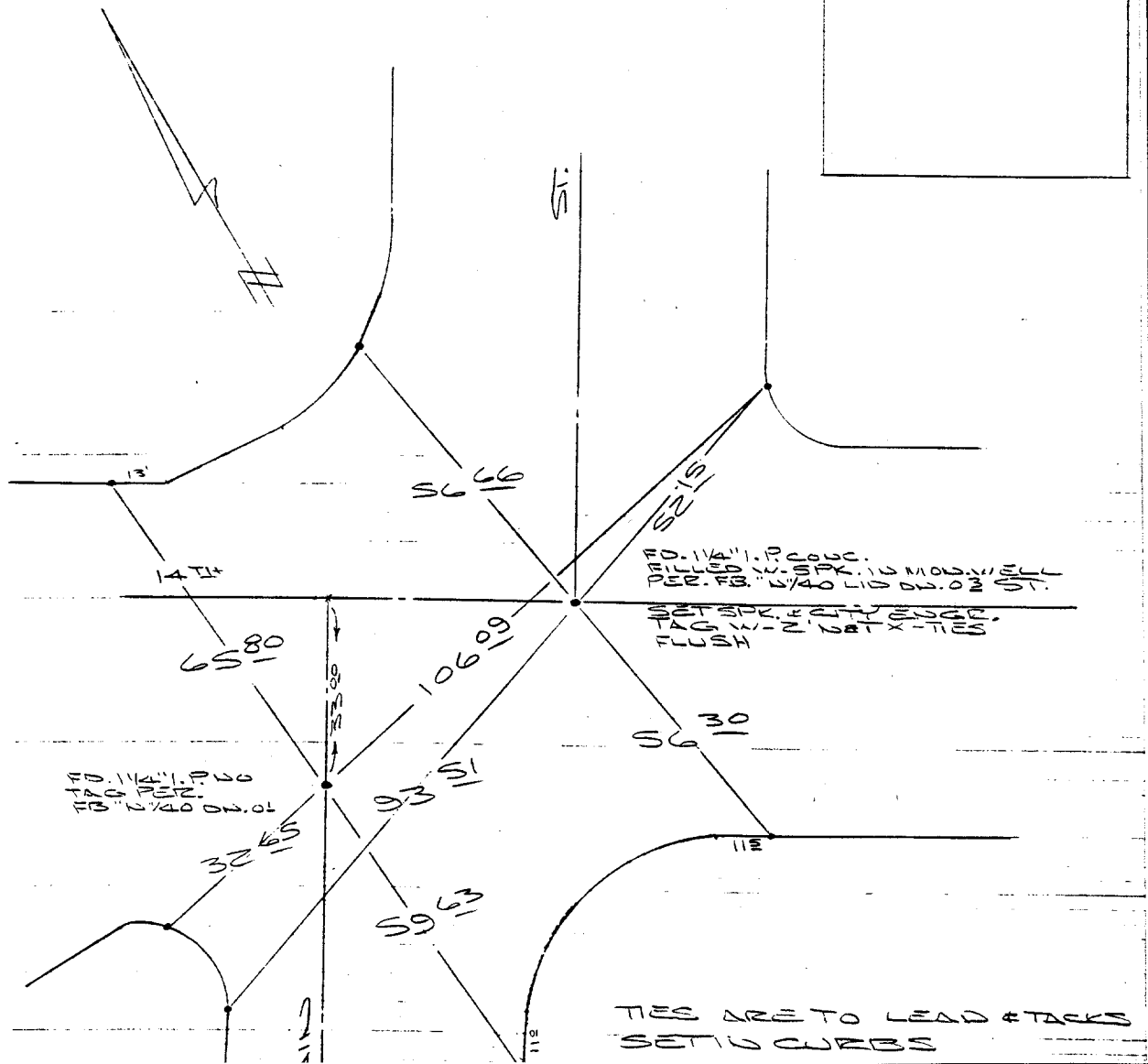


SURVEY OF MAIN ST. & 14TH ST. DE. 445 PAGE 3  
 SURVEYED BY: GARZIA-STEPHENS-LOPEZ DATE NOV. 22, 1989

TRANSIT TIES

HISTORICAL DATA  
 FB 222/12  
 FB 6"/40



- ✕ FD. Ramset Nail on T/C
- FD. LD. & TK. on T/C
- FD. "C" Nail on T/C
- Set LD. & TK. on T/C

Street: MAIN ST  
 X-Street: FOURTEENTH ST  
 OFFICIAL USE ONLY

Scale:  
 Date:  
 Drawn by:  
 W.O.:  
 F.B.:

**OFFICIAL TIE PLAT**  
**CITY OF RIVERSIDE**  
*These ties are for the purpose of perpetuating the found monumentation. No claim is made as to the relationship of the points or lines shown hereon to true boundary locations.*

Sheet 1 of 1  
 File No.: