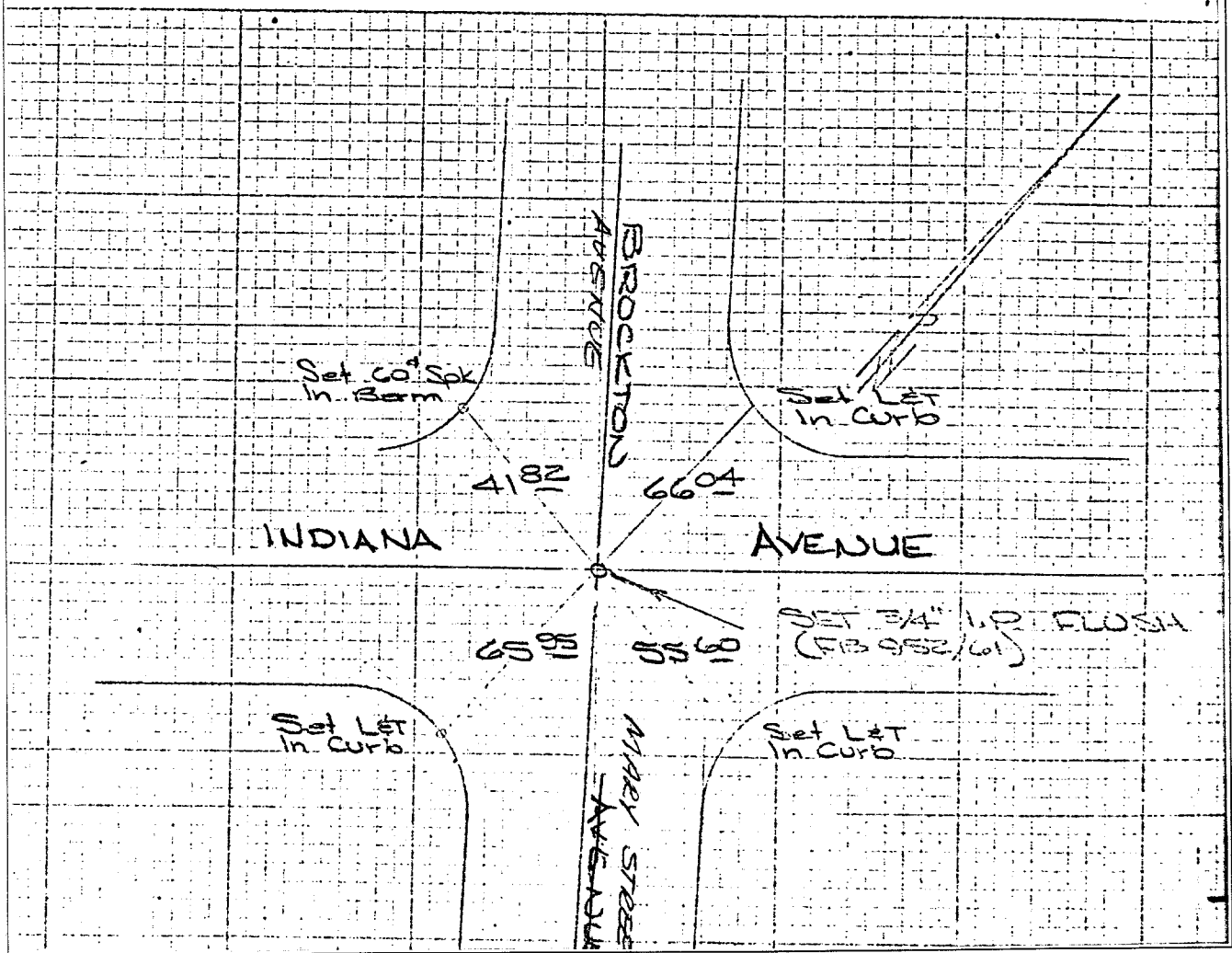


Street: INDIANA AVE

X-Street: MARY BROCKTON  
OFFICIAL USE ONLY

FB 952/61				STEELE
FB 919/17				FRYC
FB 669/53				NEW
FB 254/63				SEPT 19 71
				FB 952/60



- ✕ FD. Ramset Nail on T/C
- FD. LD. & TK. on T/C
- FD. "C" Nail on T/C
- Set LD. & TK. on T/C

Scale:  
Date:  
Drawn by:  
W.O.:  
F.B.:

## OFFICIAL TIE PLAT

### CITY OF RIVERSIDE

*These ties are for the purpose of perpetuating the found monumentation. No claim is made as to the relationship of the points or lines shown hereon to true boundary locations.*

Sheet 1 of 1  
File No.: