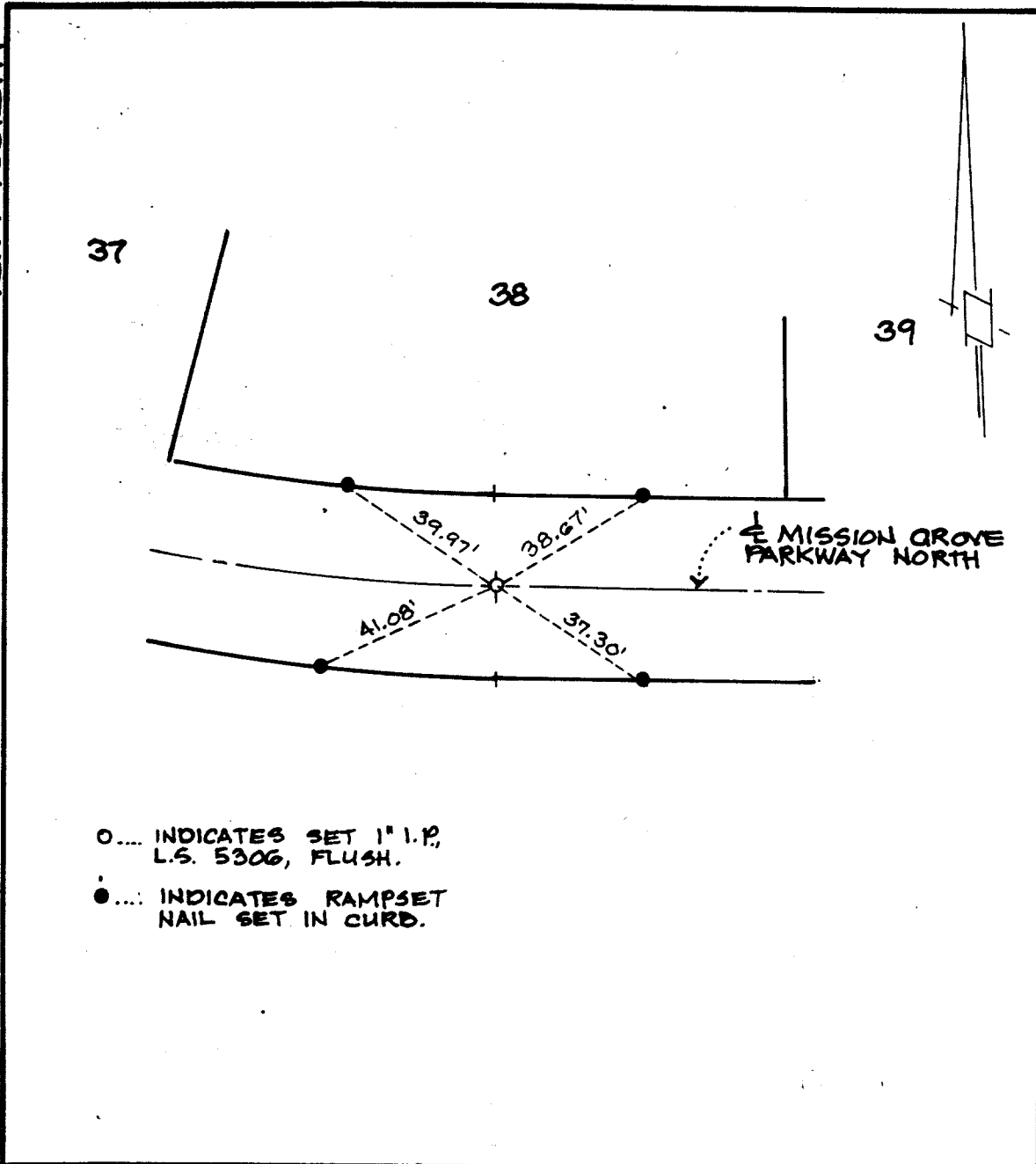


PKWY NORTH



- INDICATES SET 1" I.P., L.S. 5306, FLUSH.
- INDICATES RAMPSET NAIL SET IN CURB.

Street: MISSION GROVE PKWY NORTH X-Street: OFFICIAL USE ONLY

TRACT NO. 21685
CENTERLINE TIES.

CITY OF RIVERSIDE, CALIFORNIA



Southland Engineering

2200 Business Way, Ste. 100

SHEET

7

OF 38

- ✕ FD. Ramset Nail on T/C
- FD. "C" Nail on T/C

- FD. LD. & TK. on T/C
- Set LD. & TK. on T/C

Scale:
Date: JUNE 1991
Drawn by:
W.O.:
F.B.:

OFFICIAL TIE PLAT
CITY OF RIVERSIDE

These ties are for the purpose of perpetuating the found monumentation. No claim is made as to the relationship of the points or lines shown hereon to true boundary locations.

Sheet **3** of **38**
File No.: