

5737.TIF

MISSION GROVE PARKWAY & INTERSECTION OF

SURVEY NOTES

P.M. 23178

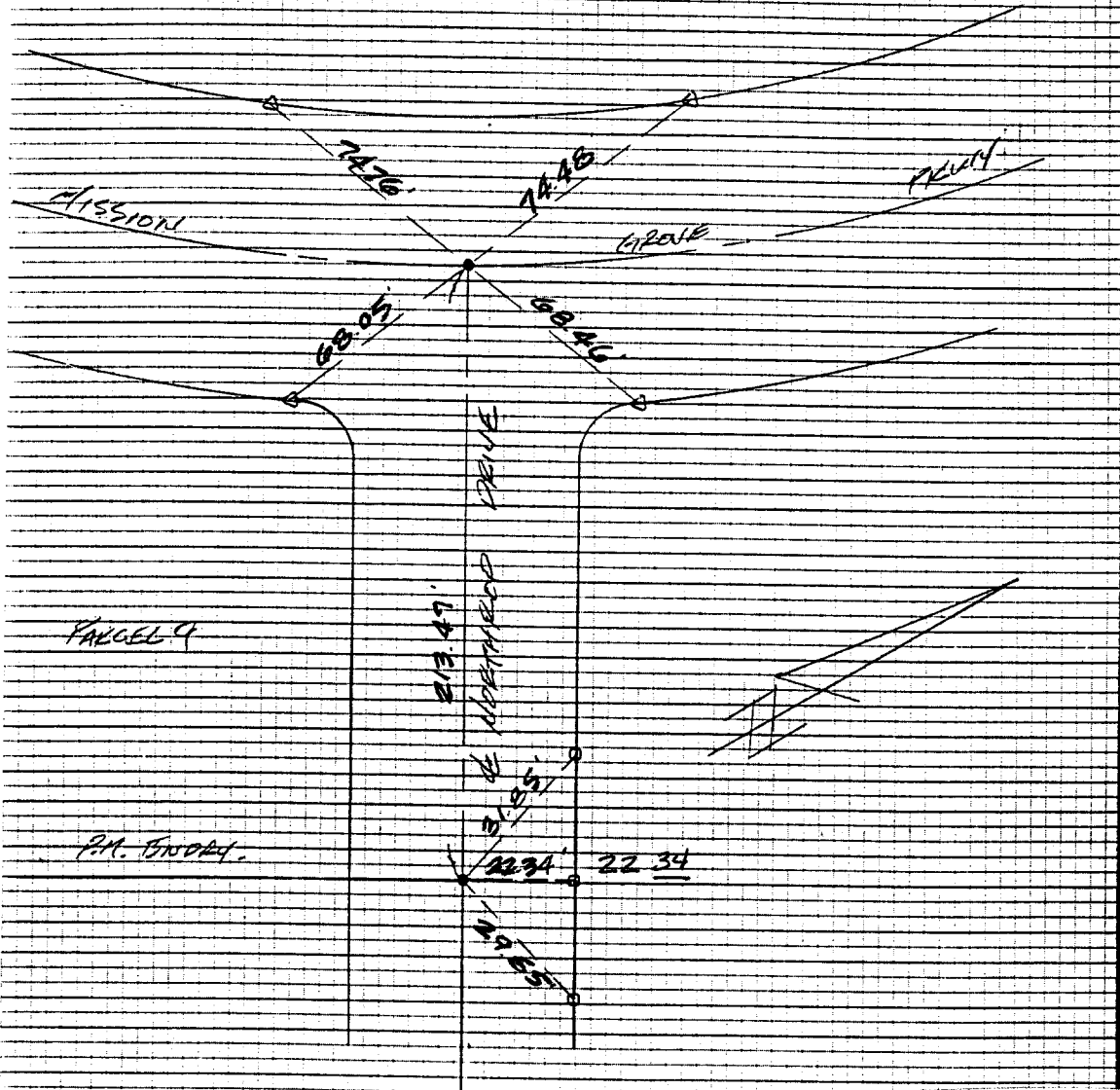


J.F. Davidson Associates, Inc.
ENGINEERING PLANNING SURVEYING
LANDSCAPE ARCHITECTURE

F.B. 10571/63

SURVEY OF P.M. 23178 & TIES SHEET 3 OF 5 SHEETS
FOR REGIONAL PROPERTIES W.O. No. _____ Date 5-2-95
SURVEY PARTY FARLOW, LANGRISH REF. _____ A.M. _____

- SET RAMSET NAIL ON T.C. AS TRAVEL TIES
- SET RAMSET NAIL ON T.C. (PARSON)
- 1" IP #1053018 PULL FLUSH



- × FD. Ramset Nail on T/C
- FD. "C" Nail on T/C

- FD. LD. & TK. on T/C
- Set LD. & TK. on T/C

Street: MISSION GROVE PARKWAY

X-Street: NORTH RAP DRIVE

OFFICIAL USE ONLY

Scale:

Date:

Drawn by:

W.O.:

F.B.:

OFFICIAL TIE PLAT CITY OF RIVERSIDE

These ties are for the purpose of perpetuating the found monumentation. No claim is made as to the relationship of the points or lines shown hereon to true boundary locations.

Sheet 1 of 1

File No.: