

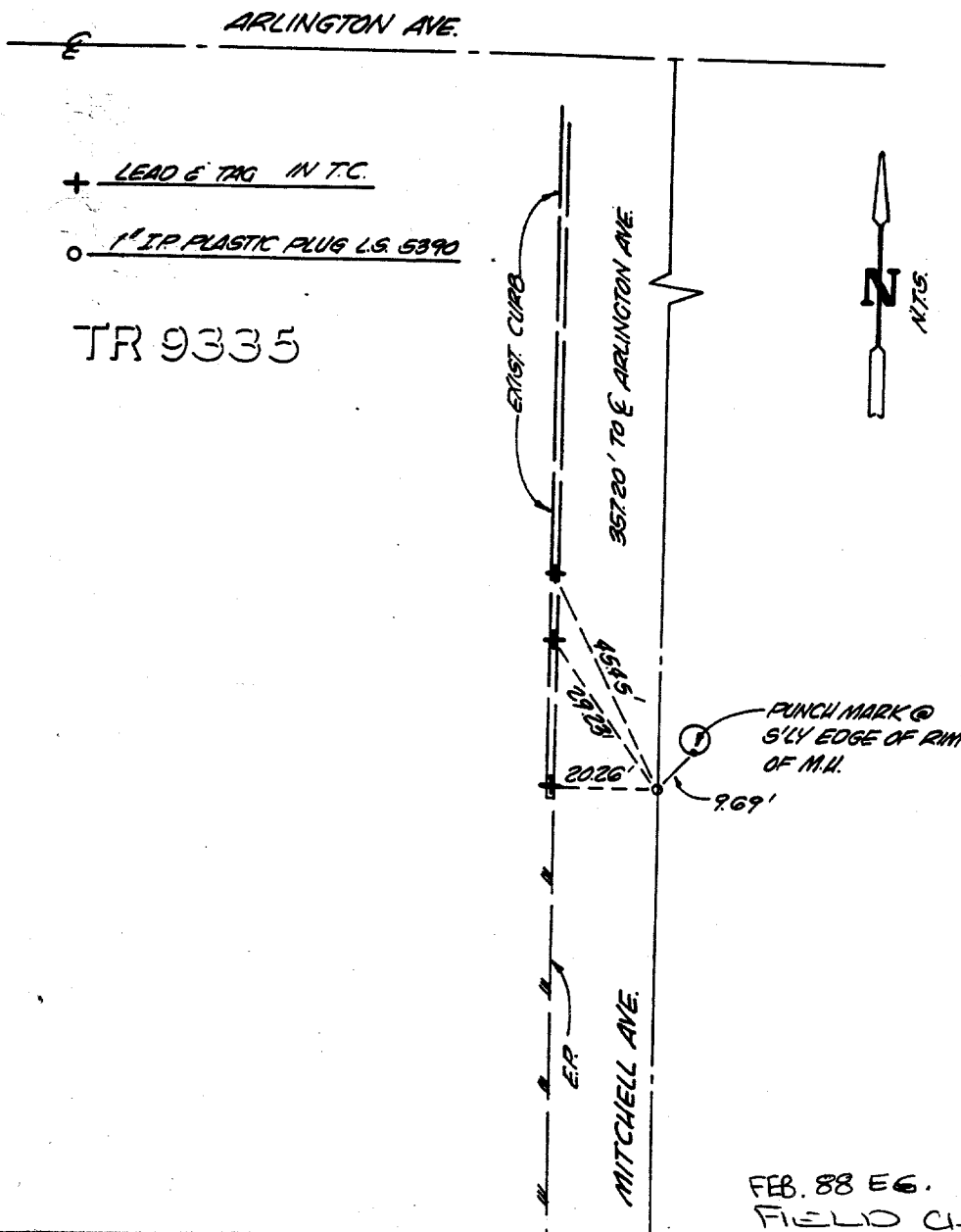
5757.TIF

**ADKAN ENGINEERS**  
CIVIL ENGINEERING, PLANNING, LAND SURVEYING

TR 9335

RECORDED

(21)



+ LEAD & TAG IN T.C.  
○ 1" IR PLASTIC PLUG L.S. 5390

TR 9335

Street: MITCHELL AVE S/O X-Street: ARLINGTON AVE  
OFFICIAL USE ONLY

- × FD. Ramset Nail on T/C
- FD. LD. & TK. on T/C
- FD. "C" Nail on T/C
- Set LD. & TK. on T/C

Scale:  
Date:  
Drawn by:  
W.O.:  
F.B.:

**OFFICIAL TIE PLAT**  
**CITY OF RIVERSIDE**

*These ties are for the purpose of perpetuating the found monumentation. No claim is made as to the relationship of the points or lines shown hereon to true boundary locations.*

Sheet 1 of 1  
File No.: