

Street: MITCHELL AVE

X-Street: NORWOOD AVE

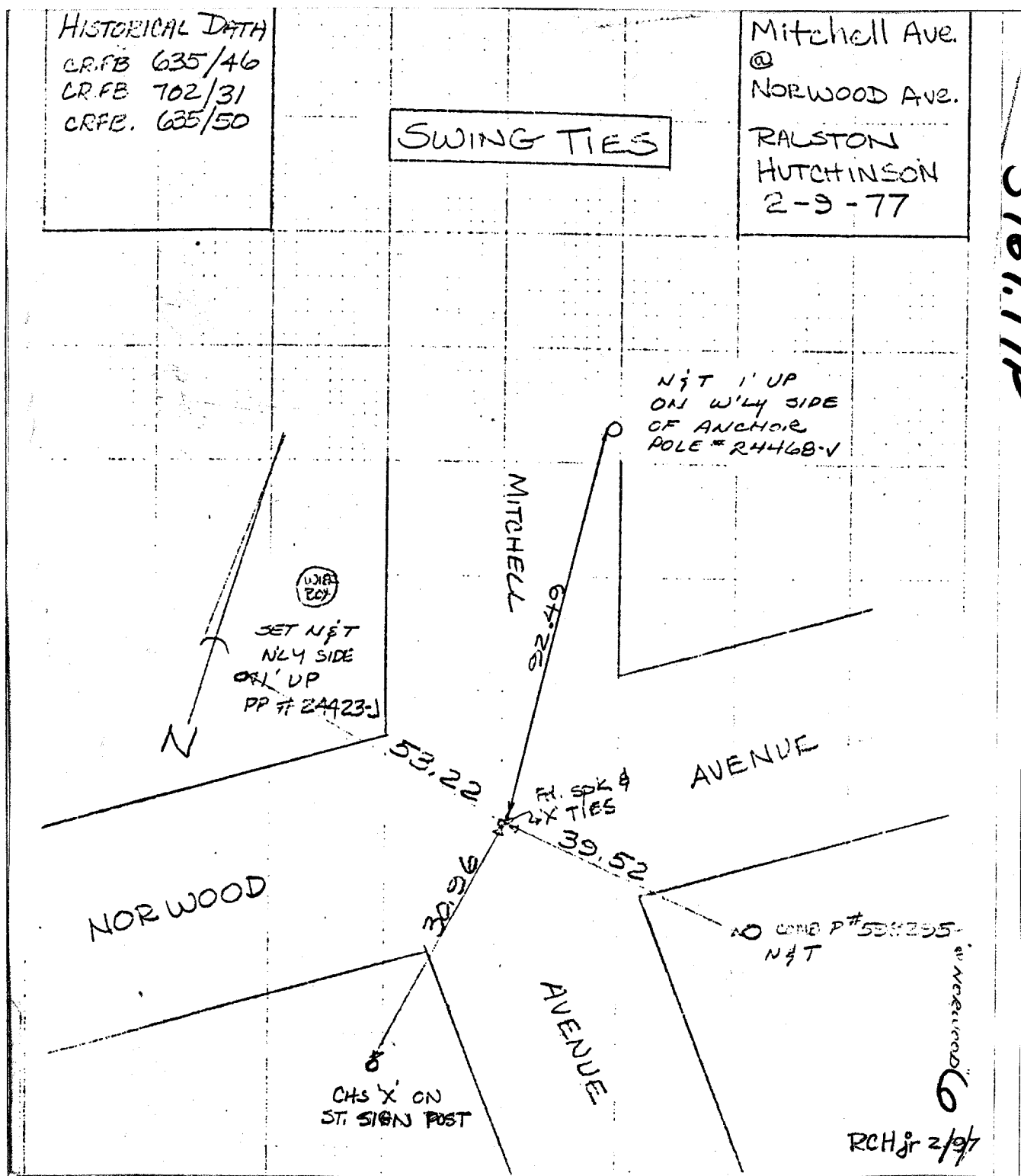
OFFICIAL USE ONLY

5767.71P

HISTORICAL DATA  
CRFB 635/46  
CRFB 702/31  
CRFB. 635/50

SWING TIES

Mitchell Ave.  
@  
NORWOOD AVE.  
RALSTON  
HUTCHINSON  
2-9-77



- ✕ FD. Ramset Nail on T/C
- FD. LD. & TK. on T/C
- FD. "C" Nail on T/C
- Set LD. & TK. on T/C

Scale:  
Date:  
Drawn by:  
W.O.:  
F.B.:

**OFFICIAL TIE PLAT**  
**CITY OF RIVERSIDE**

*These ties are for the purpose of perpetuating the found monumentation. No claim is made as to the relationship of the points or lines shown hereon to true boundary locations.*

Sheet 1 of 1  
File No.:

RCHjr 2/97