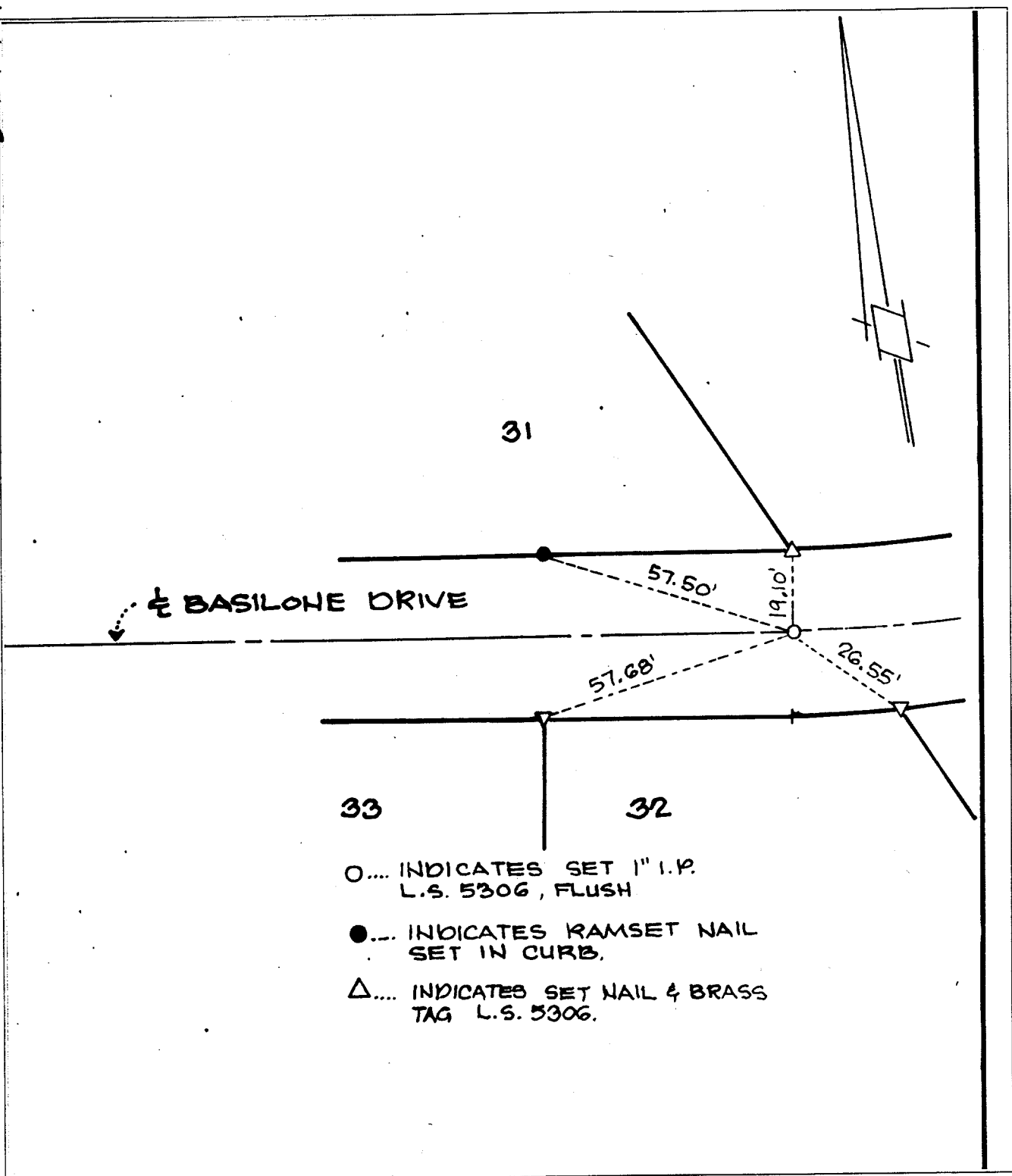


412725

Street: **BASILONE DR.**

OFFICIAL USE ONLY

X-Street: **RIDGESIDE DR.**



- ... INDICATES SET 1" I.P. L.S. 5306, FLUSH
- ... INDICATES RAMSET NAIL SET IN CURB.
- Δ... INDICATES SET NAIL & BRASS TAG L.S. 5306.

- ✕ FD. Ramset Nail on T/C
- FD. LD. & TK. on T/C
- FD. "C" Nail on T/C
- Set LD. & TK. on T/C

Scale:
 Date:
 Drawn by:
 W.O.:
 F.B.:

OFFICIAL TIE PLAT

CITY OF RIVERSIDE

These ties are for the purpose of perpetuating the found monumentation. No claim is made as to the relationship of the points or lines shown hereon to true boundary locations.

Sheet 1 of 1
 File No.: