

Street: MONROE ST.

X-Street: COLORADO AVE
OFFICIAL USE ONLY

5783.71F

COLORADO

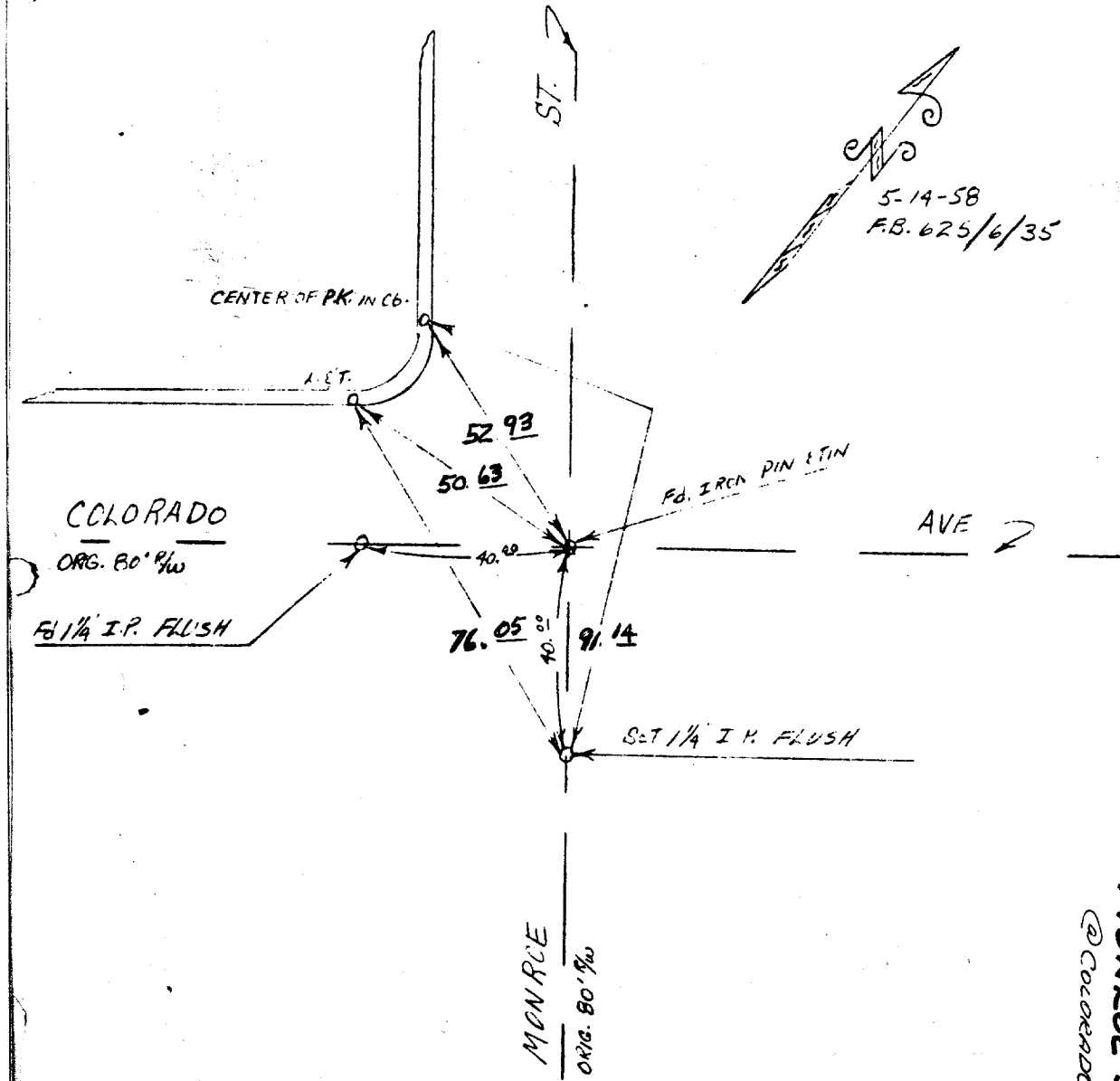
MONROE ST.

4-12-65 F.B.

A

5-14-58

F.B. 625/6/35



- × FD. Ramset Nail on T/C
- FD. "C" Nail on T/C

- FD. LD. & TK. on T/C
- Set LD. & TK. on T/C

Scale:

Date:

Drawn by:

W.O.:

F.B.:

OFFICIAL TIE PLAT CITY OF RIVERSIDE

These ties are for the purpose of perpetuating the found monumentation. No claim is made as to the relationship of the points or lines shown hereon to true boundary locations.

Sheet 1 of 1

File No.:

MONROE ST
@ COLORADO