

Street: MONROE ST.

X-Street: OFFICIAL USE ONLY

COLORADO AVE

5786.71F

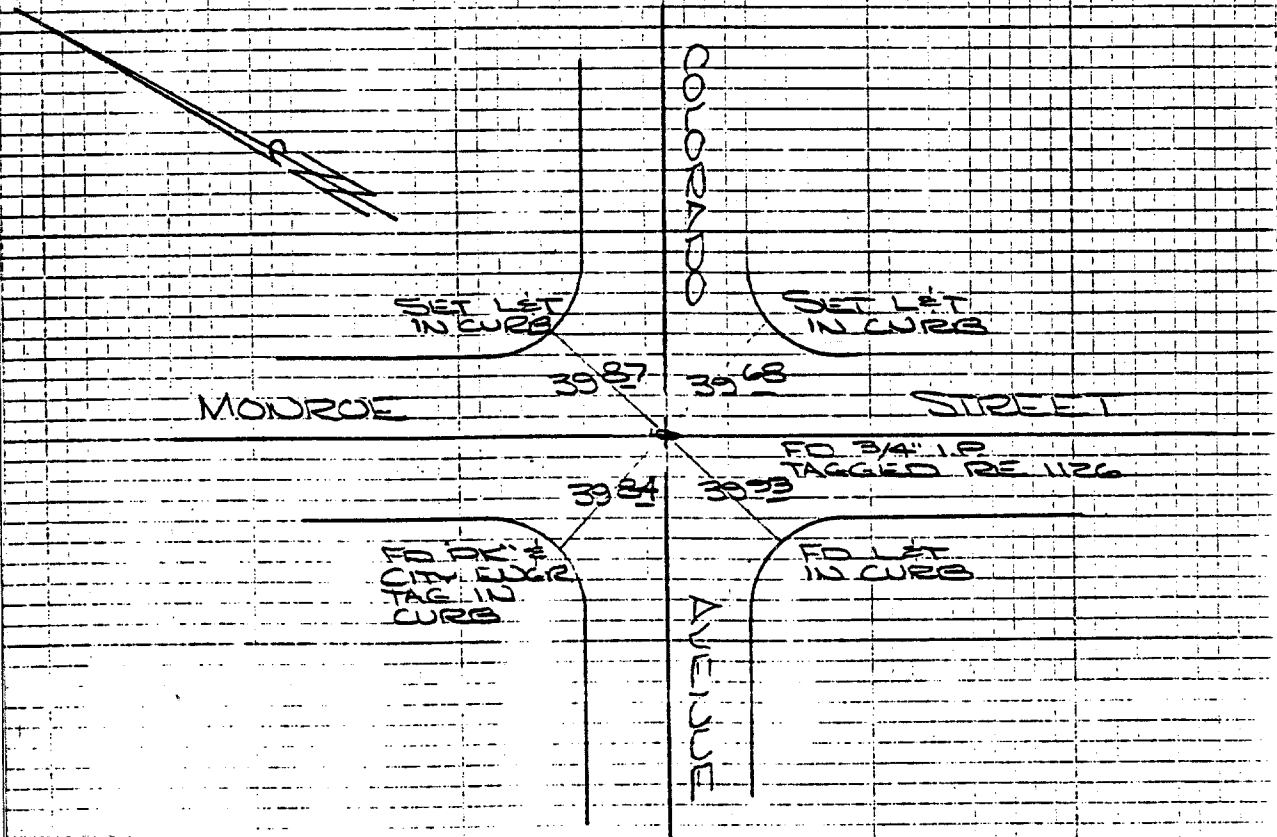
CRFB 932/77

COLORADO
AT MONROE

HISTORICAL
DATA
FB 625/635

TRANSIT TIES

CREW:
STEELE
FRY
NEW
SEPT 20 71
FB 932/77



- × FD. Ramset Nail on T/C
- FD. "C" Nail on T/C

- FD. LD. & TK. on T/C
- Set LD. & TK. on T/C

Scale:

Date:

Drawn by:

W.O.:

F.B.:

OFFICIAL TIE PLAT

CITY OF RIVERSIDE

These ties are for the purpose of perpetuating the found monumentation. No claim is made as to the relationship of the points or lines shown hereon to true boundary locations.

Sheet 1 of 1

File No.: