

SWING TIES

HISTORICAL DATA:
CRFB 670/48

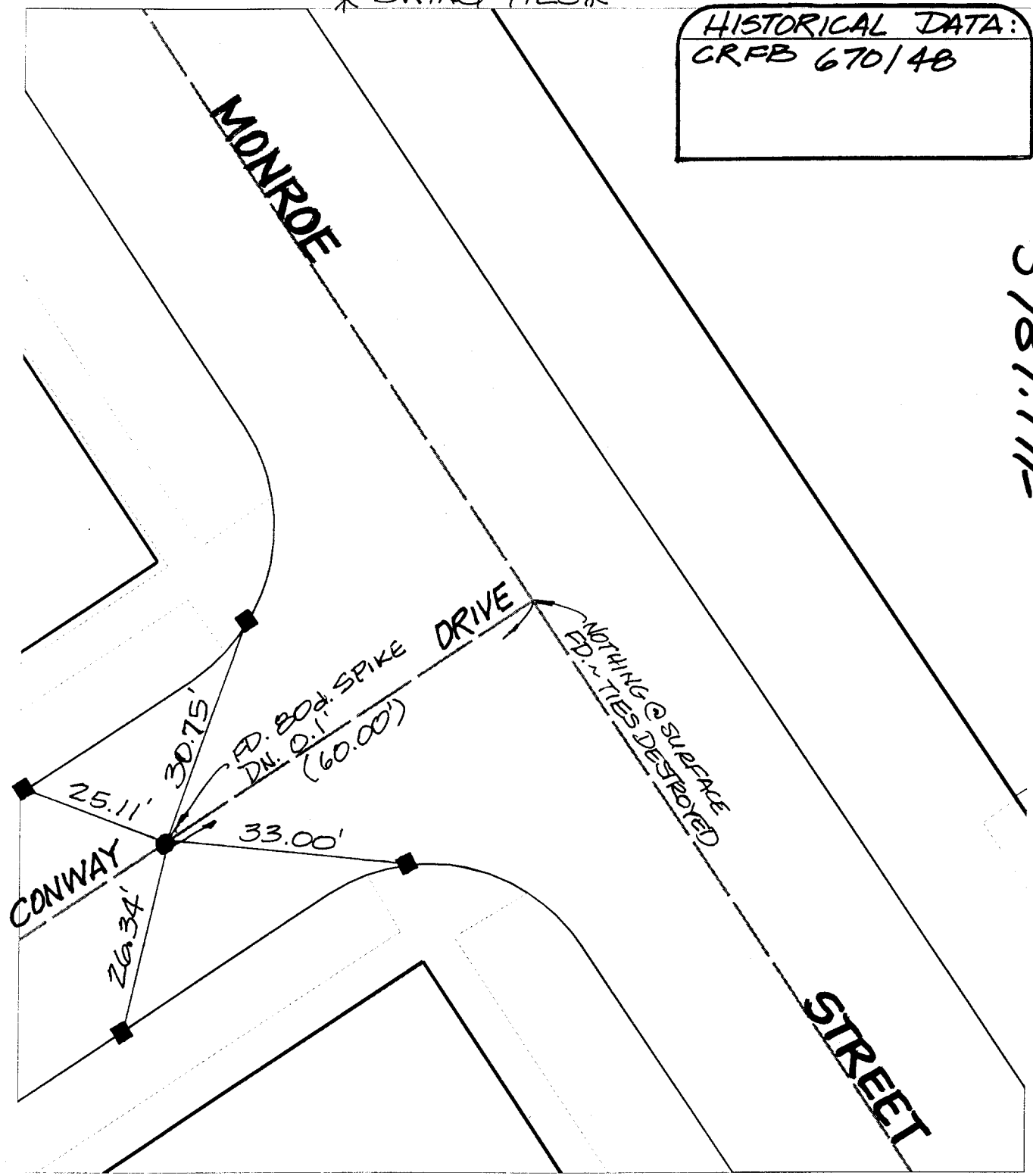
Street:

CONWAY DR.

X-Street:
OFFICIAL USE ONLY

MONROE ST.

5787.71F



Scale: 1" = 20'
 Date: 08/05/99
 Drawn by: L. Harris, KE
 W.O.:
 F.B.:

OFFICIAL TIE PLAT
 CITY OF RIVERSIDE

These ties are for the purpose of perpetuating the found monumentation. No claim is made as to the relationship of the points or lines shown hereon to true boundary locations.



Sheet of
 File No.: