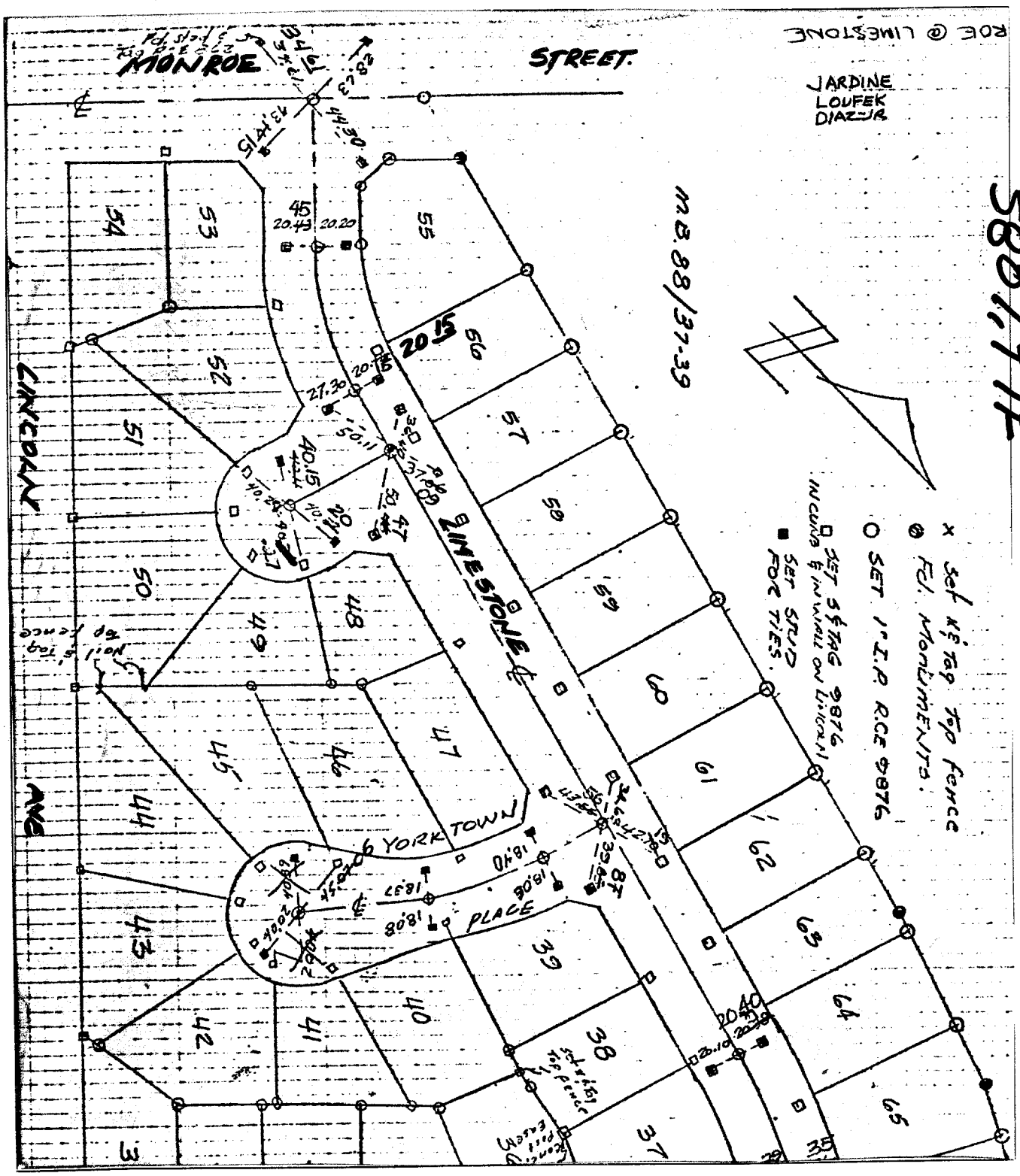


Street: MONROE ST X-Street: LIMESTONE DR.

5807, 71E

OFFICIAL USE ONLY



- Set LD. & TK. on T/C
- Set LD. & TK. on T/C
- ✕ Set K&T tag Top fence
- Fel. Monument
- SET 1" I.P. RCE 9876
- SET 5" TAG 9876
- Includes 6" in wall on Limestone
- SET STRIP FOR TIES.

- ✕ FD. Ramset Nail on T/C
- FD. LD. & TK. on T/C
- FD. "C" Nail on T/C
- Set LD. & TK. on T/C

Scale:
 Date: AUG 3 '77
 Drawn by:
 W.O.:
 F.B.: 1038

OFFICIAL TIE PLAT CITY OF RIVERSIDE

These ties are for the purpose of perpetuating the found monumentation. No claim is made as to the relationship of the points or lines shown hereon to true boundary locations.

TRACT 7813
 Sheet 1 of 1
 File No.: