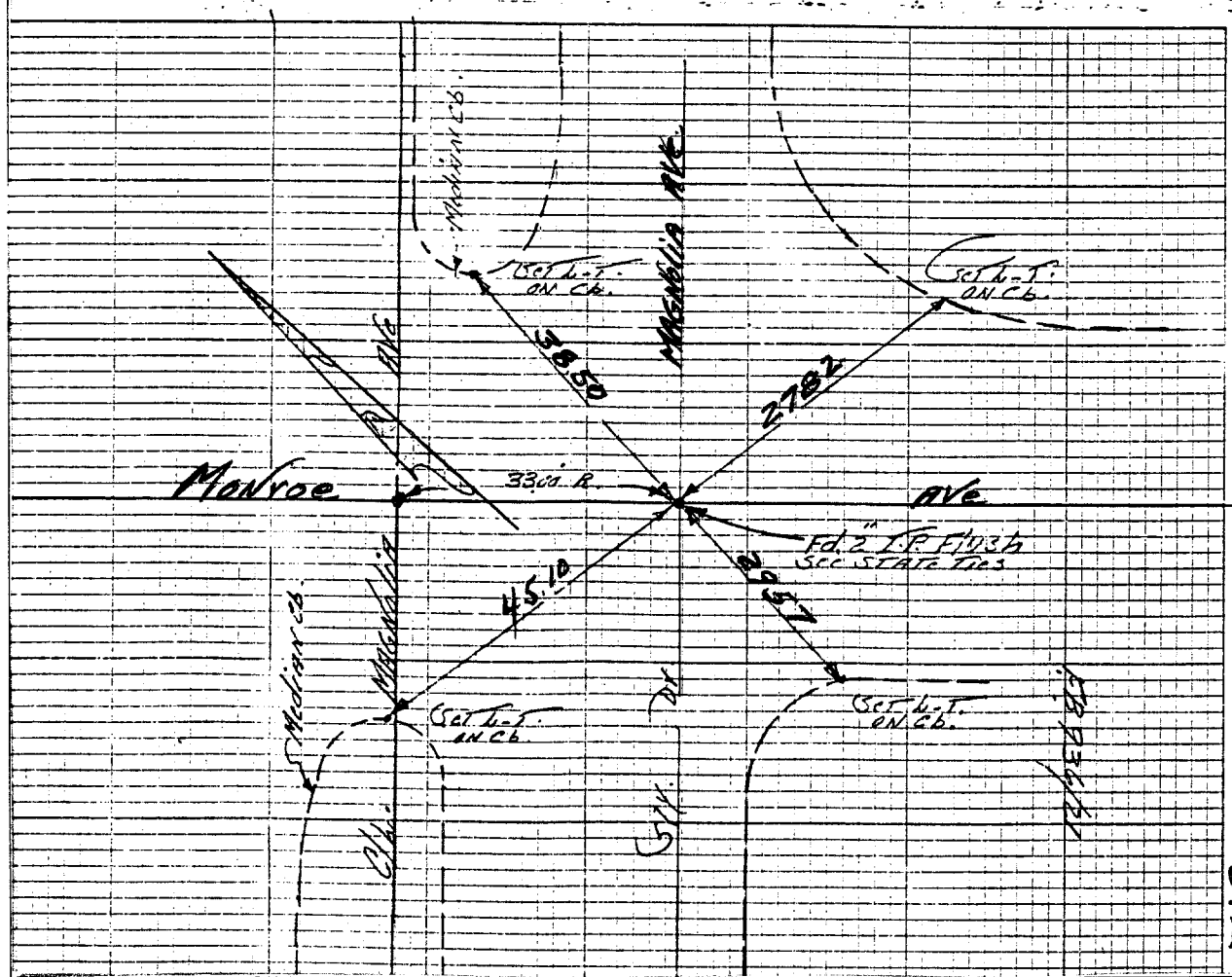


Street: MONROE ST. X-Street: MAGNOLIA AVE

OFFICIAL USE ONLY

5812.71F

Historical Data	Field Party
	LOWRY
	FWL
	RUSSELL
	FB 936/21
	3.25.70



- ✕ FD. Ramset Nail on T/C
- FD. LD. & TK. on T/C
- FD. "C" Nail on T/C
- Set LD. & TK. on T/C

Scale:
 Date:
 Drawn by:
 W.O.:
 F.B.: 936/71

OFFICIAL TIE PLAT

CITY OF RIVERSIDE

These ties are for the purpose of perpetuating the found monumentation. No claim is made as to the relationship of the points or lines shown hereon to true boundary locations.

Sheet 1 of 1
 File No.: