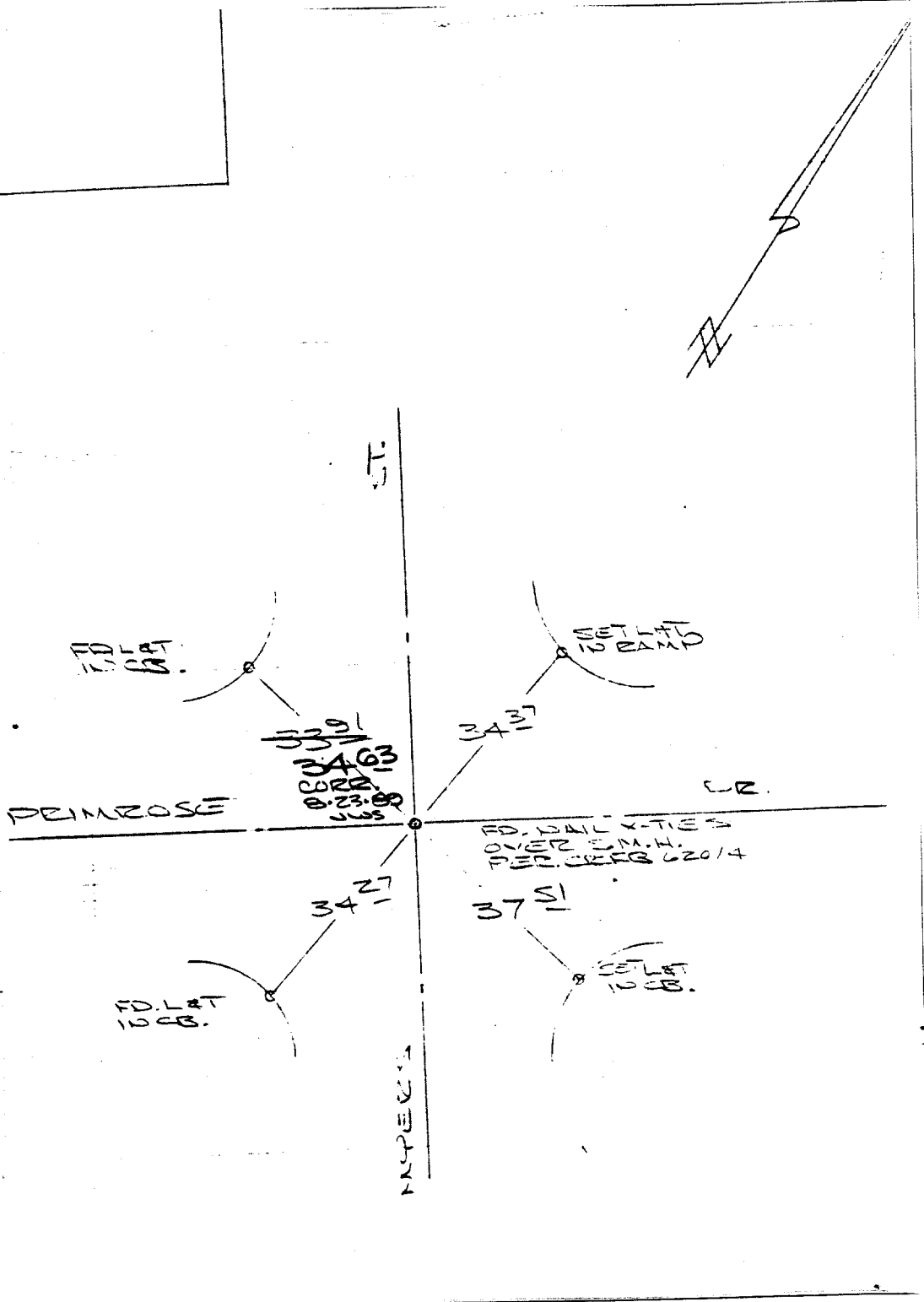


RVEY OF MYERS ST. & PRIMROSE DR  
 RVEYED BY SARGAIN-KLUZ-STEPHENS  
 INDEX LL18  
 DATE AUG 12, 1986  
 PAGE 00-A

HISTORICAL DATA  
 CEFB 62014  
 TRANSIT TIES



Street: MYERS ST.  
 5870. TIF  
 X-Street: PRIMROSE DR.  
 OFFICIAL USE ONLY

- FD. Ramset Nail on T/C
- FD. "C" Nail on T/C
- FD. LD. & TK. on T/C
- Set LD. & TK. on T/C

Scale:  
 Date:  
 Drawn by:  
 W.O.:  
 F.B.:

## OFFICIAL TIE PLAT

### CITY OF RIVERSIDE

*These ties are for the purpose of perpetuating the found monumentation. No claim is made as to the relationship of the points or lines shown hereon to true boundary locations.*

Sheet 1 of 1  
 File No.: