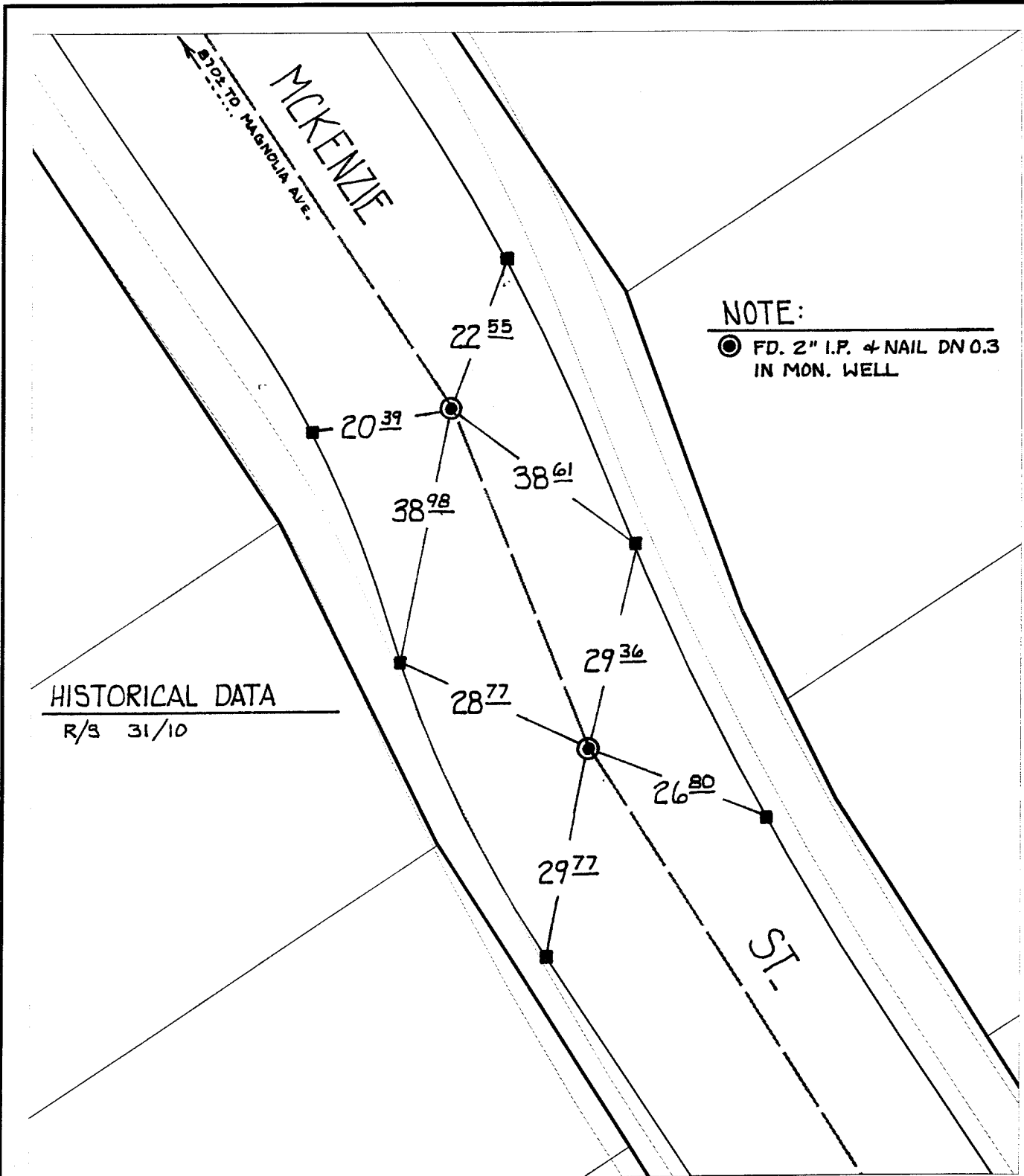


# SWING TIES

Street: **5888.71F**

**MCKENZIE ST**

X-Street: **ANDREW TO MAGNOLIA**  
OFFICIAL USE ONLY



× FD. Ramset Nail on T/C  
■ FD. "C" Nail on T/C

● FD. LD. & TK. on T/C  
○ Set LD. & TK. on T/C

Scale: 1" = 20'  
Date: 11/24/99  
Drawn by: scurtis  
W.O.:  
F.B.:

## OFFICIAL TIE PLAT CITY OF RIVERSIDE

*These ties are for the purpose of perpetuating the found monumentation. No claim is made as to the relationship of the points or lines shown hereon to true boundary locations.*



Sheet 1 of 1  
File No.: