



CITY OF RIVERSIDE, INC.
ENGINEERING PLANNING SURVEYING
ARCHITECTURE LANDSCAPE ARCHITECTURE

F8 13251 / 322

SURVEY OF CENTERLINE TIES

TIE SH. 1 OF 5

FOR TRACT 22653-7

W.O. No. 9513251

Date 8-31-95

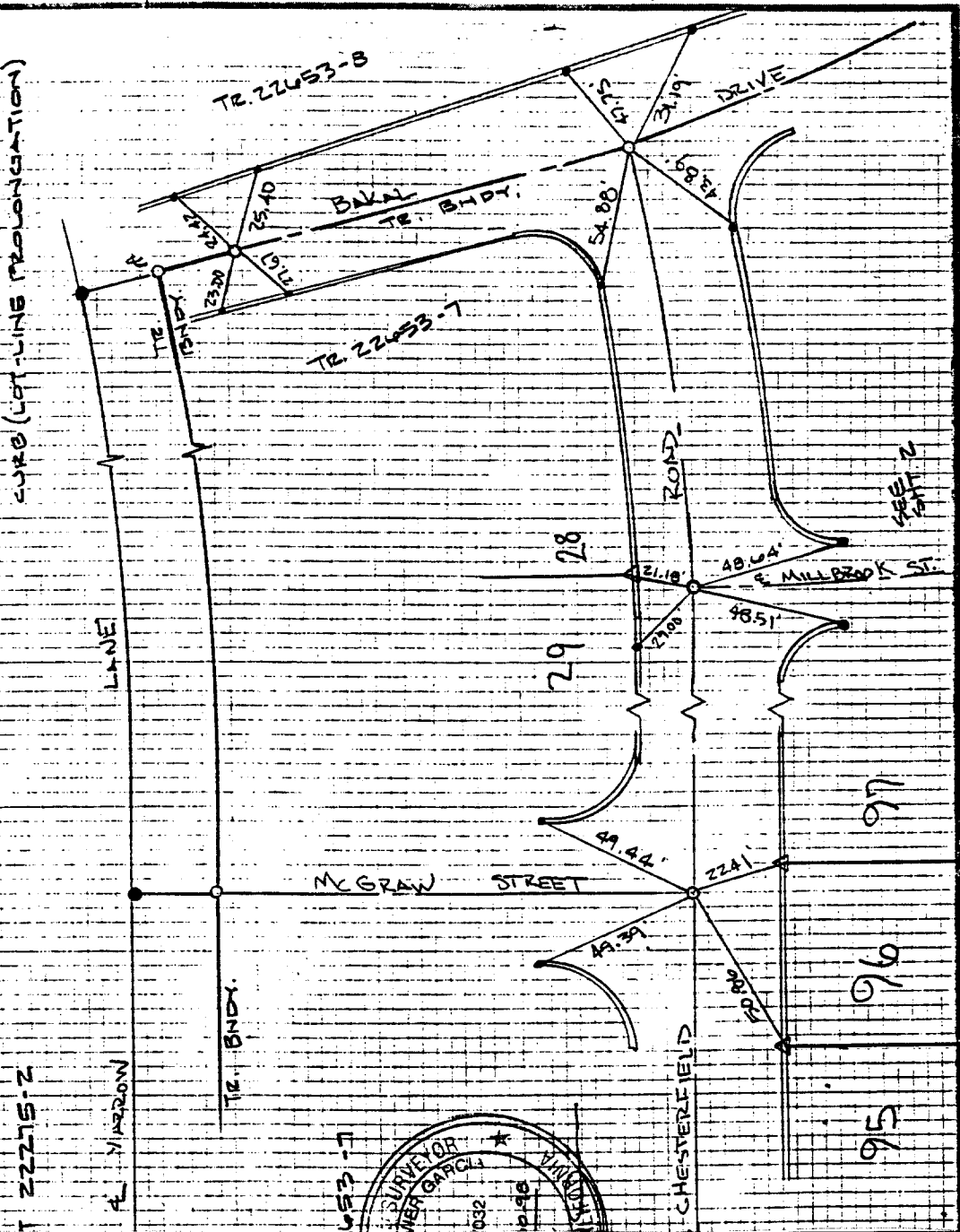
SURVEY PARTY PADILLA / VILLA

REF. AM.

SURVEY NOTES

McGraw St. Chesterfield Rd.

- FD 11" I.P. in 1/2" 3018 PLUGS PER 1000/50
- SET 11" I.P. in 1/2" 3018 PLUGS FLUSH
- SET RAMSET NAIL ON TOP OF CURB
- △ FD NAIL WITH 3018 TAG ON TOP OF CURB (LOT-LINE PROLONGATION)



- × FD. Ramset Nail on T/C
- FD. LD. & TK. on T/C
- FD. "C" Nail on T/C
- Set LD. & TK. on T/C

Scale:

Date:

Drawn by:

W.O.:

F.B.: 13251/322

OFFICIAL TIE PLAT
CITY OF RIVERSIDE

These ties are for the purpose of perpetuating the found monumentation. No claim is made as to the relationship of the points or lines shown hereon to true boundary locations.

Sheet 1 of 1

File No.:

Street: Mc Graw St.
5897.71F
OFFICIAL USE ONLY
X-Street: CHESTERFIELD RD.