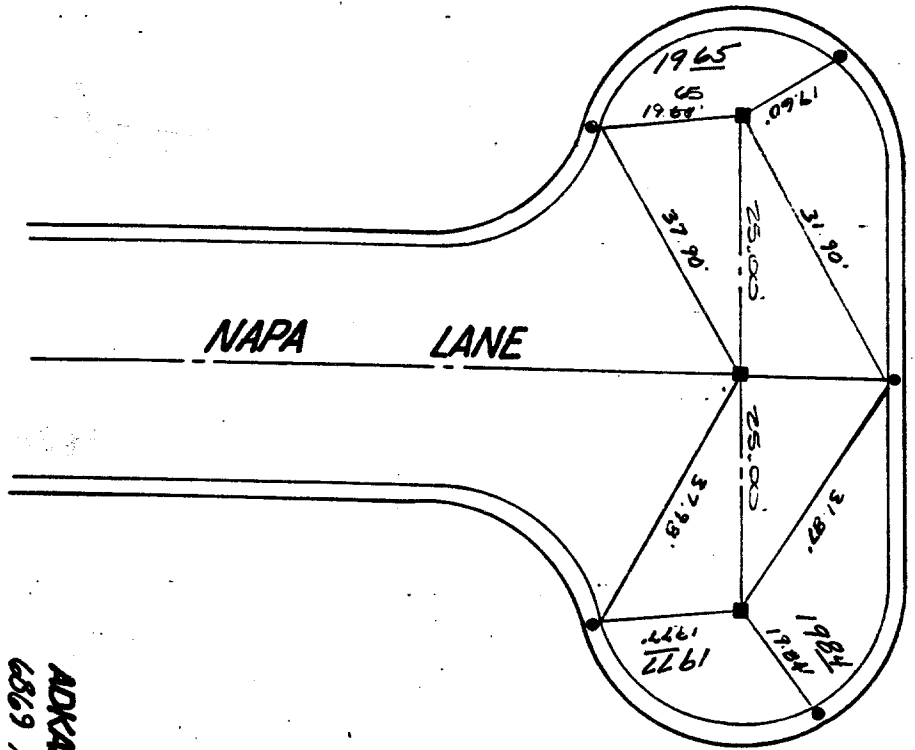


Street: NAPA LANE X-Street: _____
~~5913 TIF~~ 5913 TIF OFFICIAL USE ONLY

SERRANO COUNTY
 TRACT 17216



ADKAM ENGINEERS
 6869 Airport Dr. Suite 302
 Riverside Ca. 92504
 (714) 688-0291

- ✕ FD. Ramset Nail on T/C
- FD. LD. & TK. on T/C
- FD. "C" Nail on T/C
- Set LD. & TK. on T/C

OFFICIAL TIE PLAT
 CITY OF RIVERSIDE

These ties are for the purpose of perpetuating the found monumentation. No claim is made as to the relationship of the points or lines shown hereon to true boundary locations.

Scale: _____
 Date: _____
 Drawn by: _____
 W.O.: _____
 F.B.: _____

Sheet 1 of 1
 File No.: _____