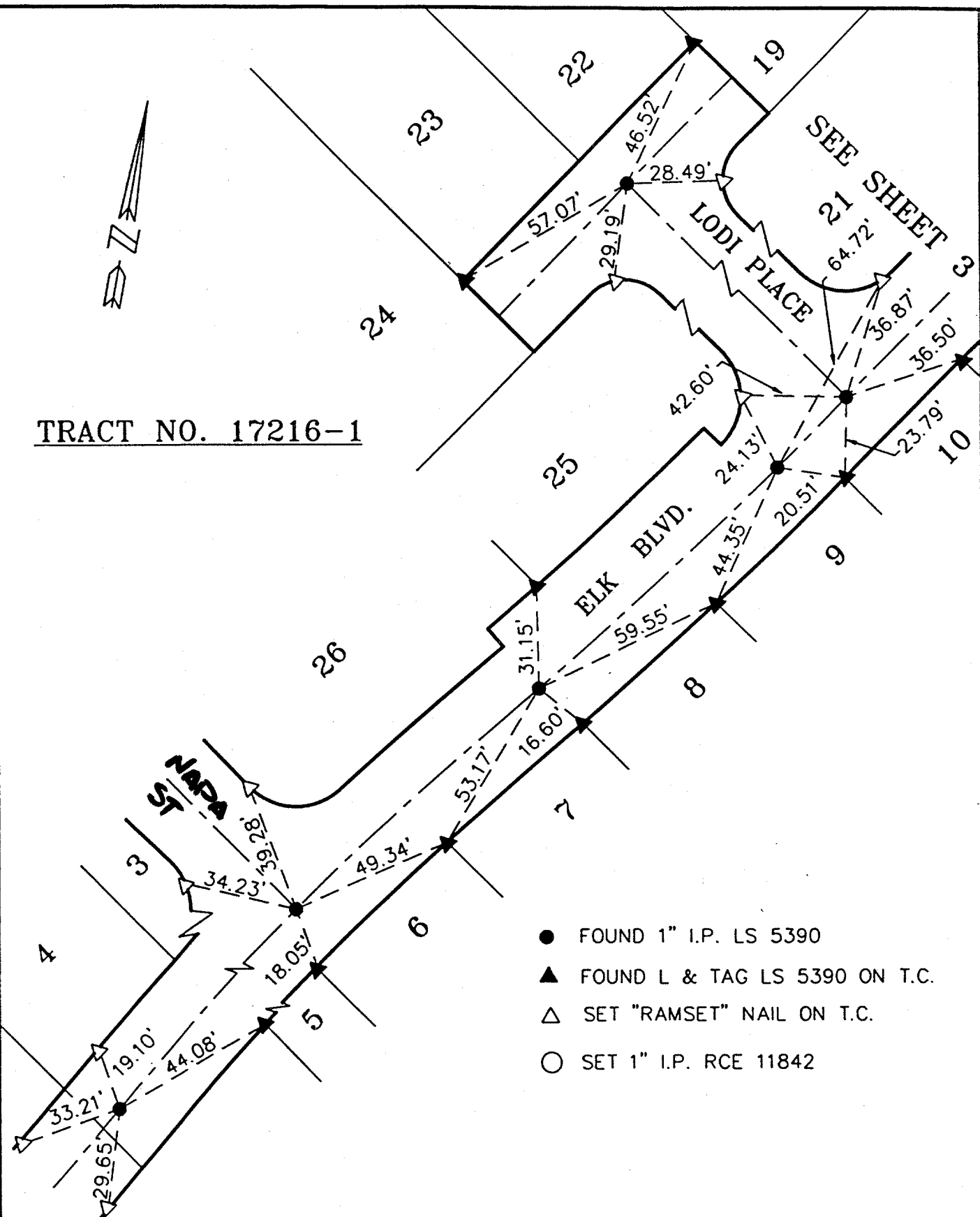




TRACT NO. 17216-1



5914.71E

- FOUND 1" I.P. LS 5390
- ▲ FOUND L & TAG LS 5390 ON T.C.
- △ SET "RAMSET" NAIL ON T.C.
- SET 1" I.P. RCE 11842

SCALE:	1"=40'
DATE:	DEC 1995
DR. BY:	03 CK. BY:
W.O.	83-115
F.B.:	

OFFICIAL TIE PLAT
CITY OF RIVERSIDE

ALBERT A. WEBB ASSOCIATES
CONSULTING ENGINEERS
RIVERSIDE, CALIFORNIA

SHEET	2
OF	3 SHEETS
FILE NO.	

NAPA STE ELK BLVD