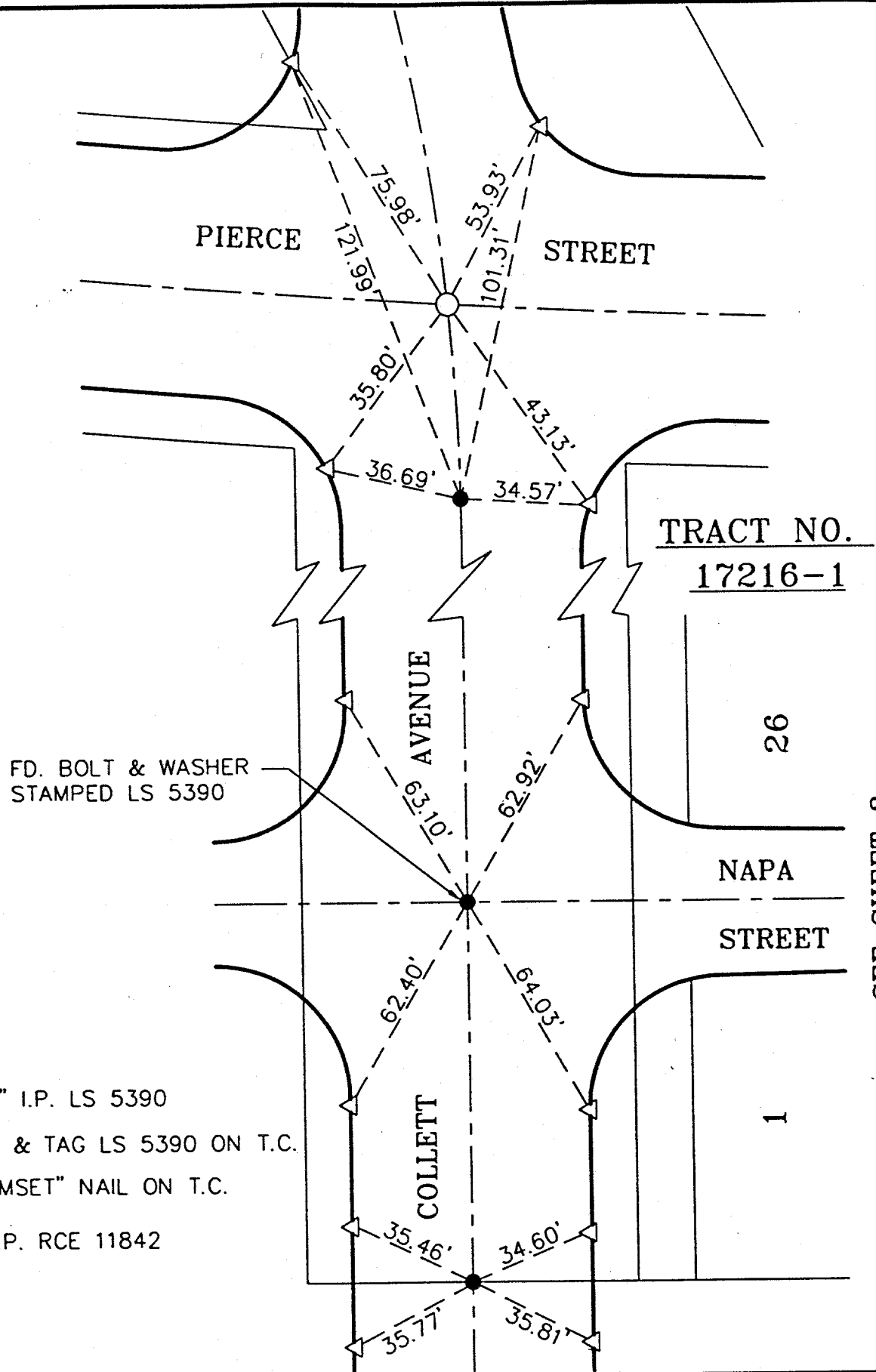


5915.71E

NAPA ST COLLETT



- FOUND 1" I.P. LS 5390
- ▲ FOUND L & TAG LS 5390 ON T.C.
- △ SET "RAMSET" NAIL ON T.C.
- SET 1" I.P. RCE 11842

SEE SHEET 2

SCALE: 1"=40'	OFFICIAL TIE PLAT CITY OF RIVERSIDE	SHEET
DATE: DEC 1995		1
DR. BY: <i>[Signature]</i> CK. BY:	ALBERT A. WEBB ASSOCIATES CONSULTING ENGINEERS RIVERSIDE, CALIFORNIA	OF 3 SHEETS
W.O. 83-115		FILE NO.
F.B.:		