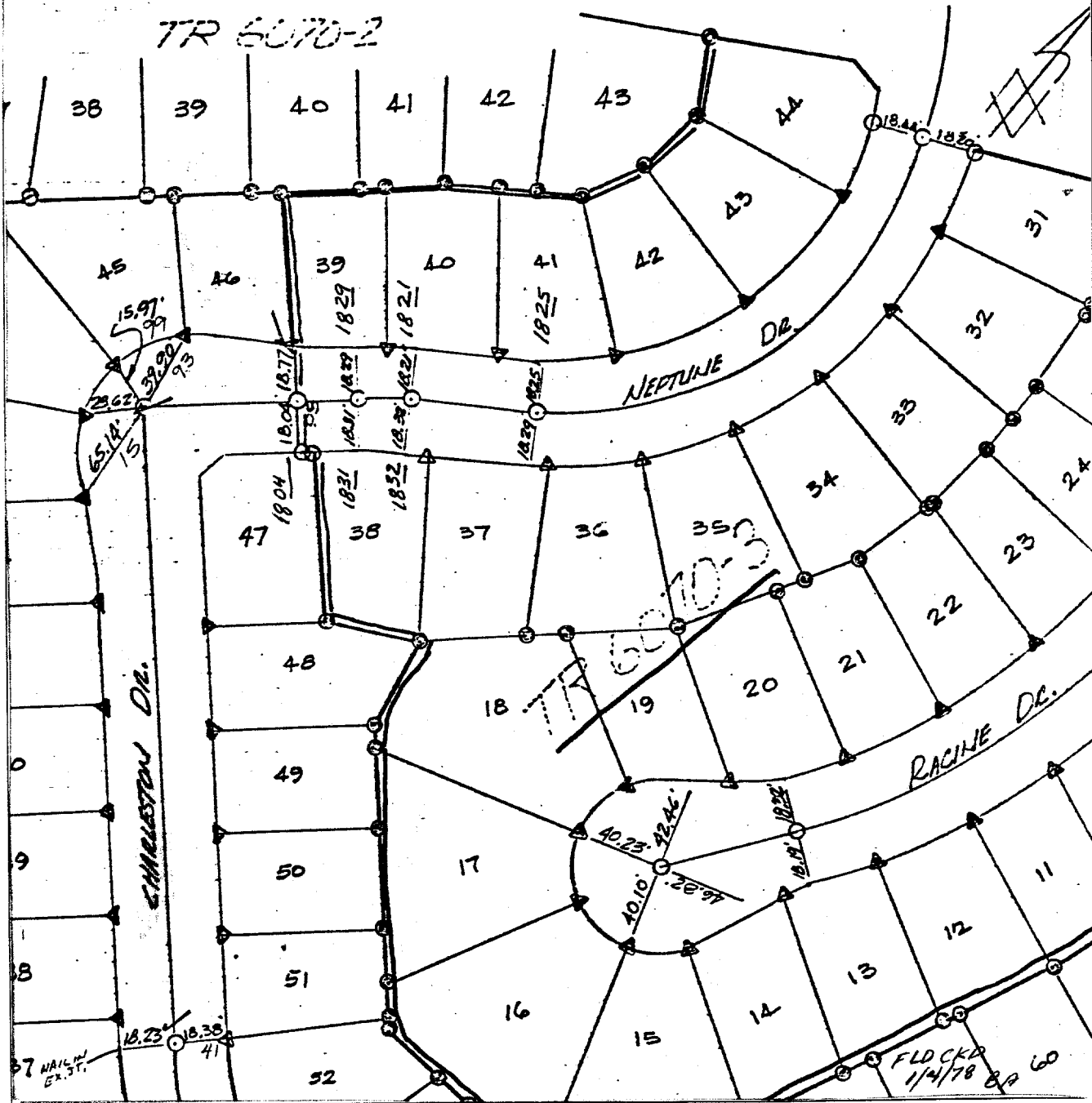


TR #6070-3 & [6070] HAS BEEN CHECKED 3/27/78 ^{Nov. 18, 76} 75-100 # 76-105
 PEREZ-LOUFER-LANGAGER 1037 215

TR 6070-2



- ✕ FD. Ramset Nail on T/C
- FD. LD. & TK. on T/C
- FD. "C" Nail on T/C
- Set LD. & TK. on T/C

Scale:
 Date:
 Drawn by:
 W.O.:
 F.B.: 1037

OFFICIAL TIE PLAT

CITY OF RIVERSIDE

These ties are for the purpose of perpetuating the found monumentation. No claim is made as to the relationship of the points or lines shown hereon to true boundary locations.

Sheet 1 of 1
 File No.:

Street: NEPTUNE DR.
 5930.TIF
 X-Street: CHARLESTON DR.
 OFFICIAL USE ONLY