

TRACT # 4016

DATE NOV. 9, 1970 J.O. 69-122

PARTY NO. AND MEMBERS PEREZ - AGUILEGA: BEELER

F.B. 1001 PAGE 138

NOTES CALLED BY

CALC'S CHECKED BY:

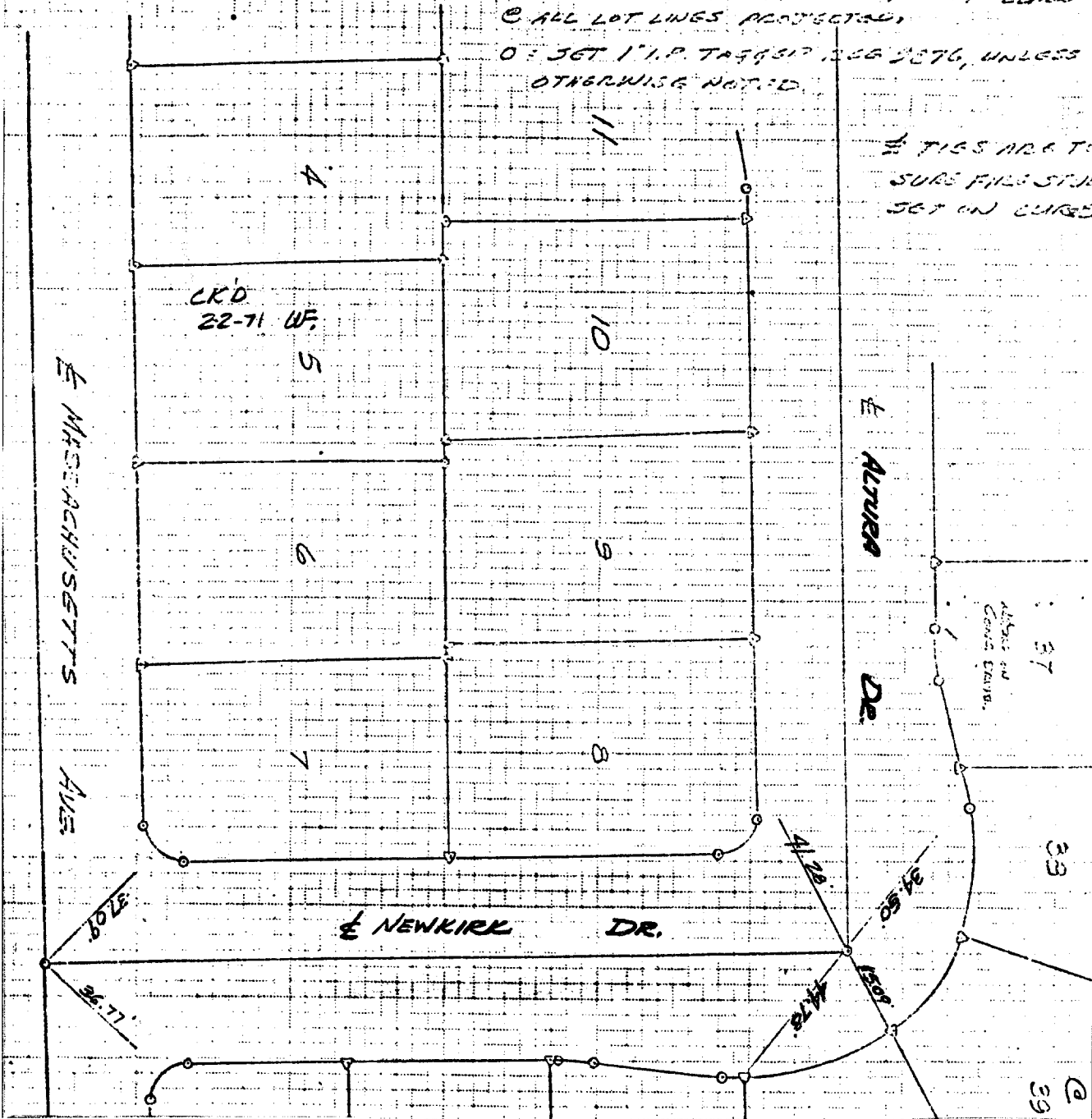
MAP NO.:

WEATHER:

A = SET SURV. PILE SPAD ON TOP OF CURB  
C = ALL LOT LINES PROJECTED

O = SET 1" I.P. TAGS 3/4" DIA. 2576, UNLESS OTHERWISE NOTED

ALL TIES ARE TO SURV. PILE SPAD SET ON CURB



× FD. Ramset Nail on T/C  
■ FD. "C" Nail on T/C

● FD. LD. & TK. on T/C  
○ Set LD. & TK. on T/C

Scale:  
Date: NOV 9, 1970  
Drawn by:  
W.O.:  
F.B.: 1001

# OFFICIAL TIE PLAT

## CITY OF RIVERSIDE

These ties are for the purpose of perpetuating the found monumentation. No claim is made as to the relationship of the points or lines shown hereon to true boundary locations.

TRACT 4016

Sheet 1 of 1  
File No.:

Street: NEWKIRK DR 5936.71 F  
X-Street: ALAMEDA DR & MASSACHUSETTS  
OFFICIAL USE ONLY