

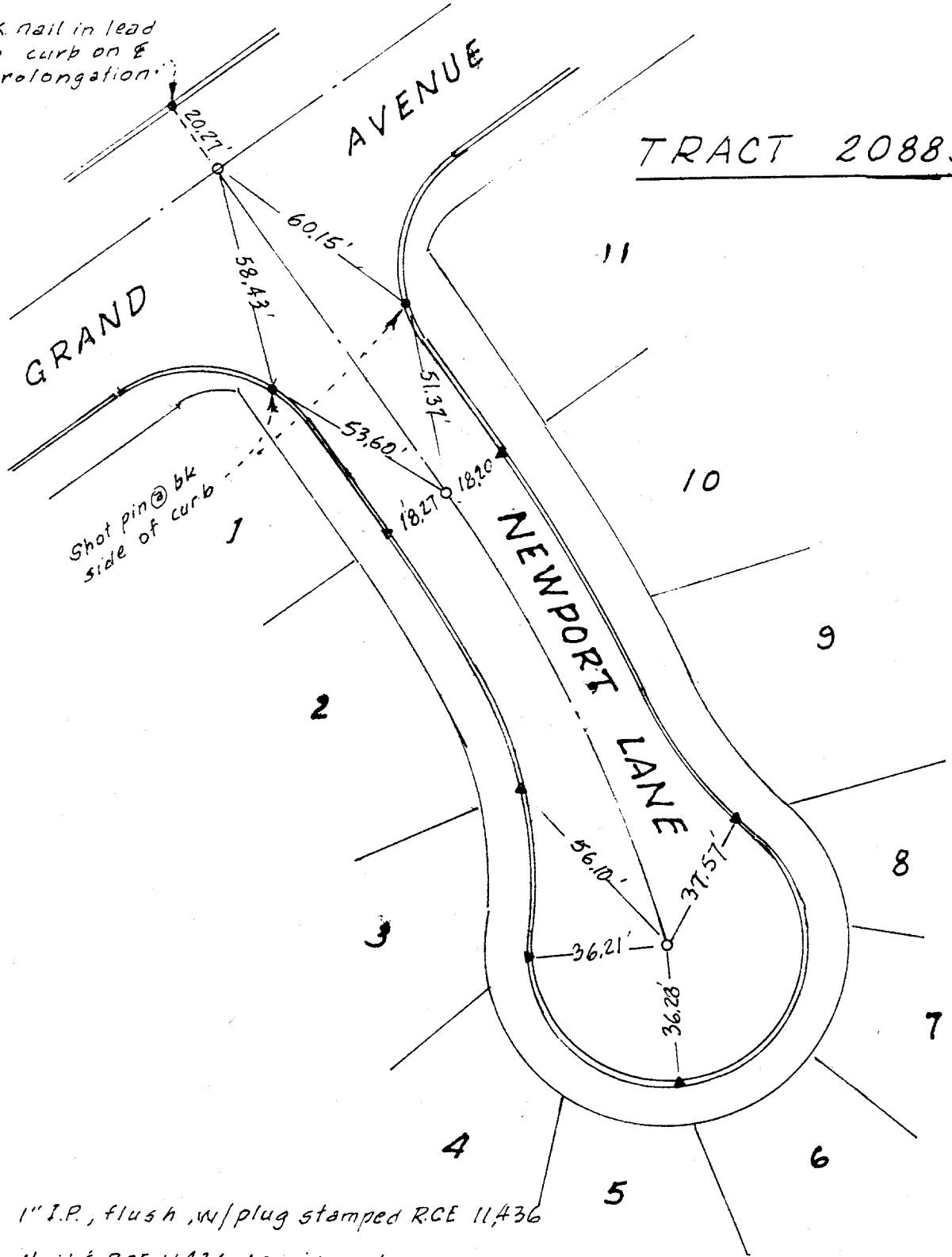
NEWPORT LN. S'LY OF GRAND AVE

5937.T1F

NEWPORT LN S'ly of Grand

P.K. nail in lead in curb on E prolongation

TRACT 20883



5937.T1F

- 1" I.P., flush, w/plug stamped RCE 11436
- ▶ Nail & RCE 11436 tag in curb, on prolongation of lot line.

SCALE: 1" = 40'	OFFICIAL TIE PLAT CITY OF RIVERSIDE	SHEET	
DATE: Dec. 9, 1994		1	
DR. BY: JRH	HORTON ENGINEERING GRAND TERRACE CALIFORNIA	OF	SHEETS
N. O.		1	
F. B.		FILE NO.	