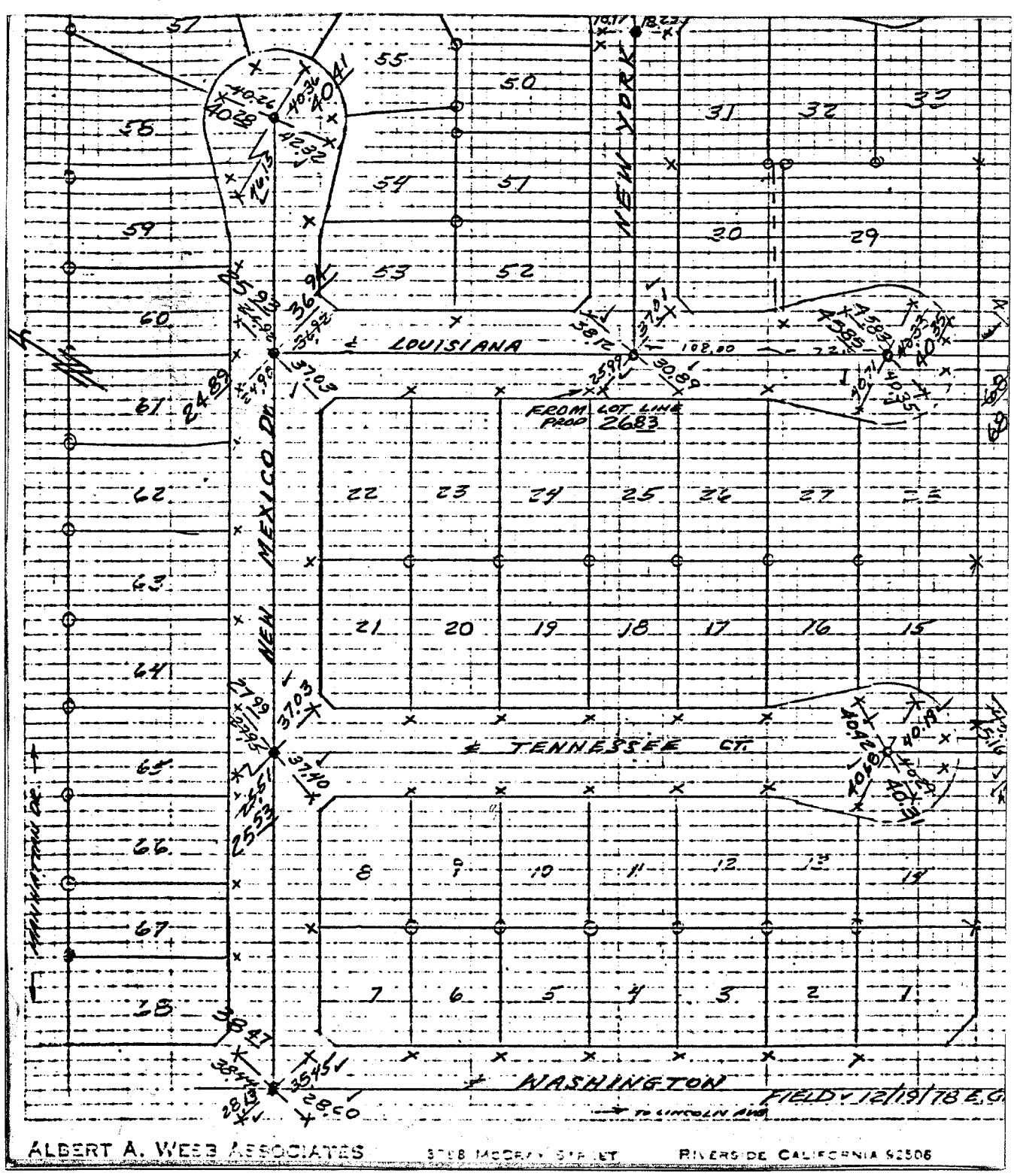


Street: **NEW MEXICO DR.**
5939.71 F

X-Street: **LOUISIANA & TENNESSEE CT.**
 OFFICIAL USE ONLY



ALBERT A. WEBB ASSOCIATES 3758 MCCRAY STREET RIVERSIDE CALIFORNIA 92506

- ✕ FD. Ramset Nail on T/C
- FD. LD. & TK. on T/C
- FD. "C" Nail on T/C
- Set LD. & TK. on T/C

Scale:
 Date:
 Drawn by:
 W.O.:
 F.B.: 1039

OFFICIAL TIE PLAT

CITY OF RIVERSIDE

These ties are for the purpose of perpetuating the found monumentation. No claim is made as to the relationship of the points or lines shown hereon to true boundary locations.

TR 6734

Sheet 1 of 1
 File No.: